

**Product number CA11181\_BROOKE-S**

Family	Brooke	FWHM	24 degrees
Type	RefAssy	Efficiency	94 %
LED	BXRA ES Rectangle	cd/Im	-
Color	Metal	Gerber File	Available
Diameter	45 mm		
Height	20.1 mm		
Style	Round		
Optic Material	-		
Holder Material	-		
Fastening	["tape"]		
Status	Production ready		

**Product number CA11182\_BROOKE-M**

Family	Brooke	FWHM	32 degrees
Type	RefAssy	Efficiency	93 %
LED	BXRA ES Rectangle	cd/Im	-
Color	Metal	Gerber File	Available
Diameter	45 mm		
Height	21.1 mm		
Style	Round		
Optic Material	-		
Holder Material	-		
Fastening	["tape"]		
Status	Production ready		

**Product number CA11183\_BROOKE-W**

Family	Brooke	FWHM	50 degrees
Type	RefAssy	Efficiency	92 %
LED	BXRA ES Rectangle	cd/Im	-
Color	Metal	Gerber File	Available
Diameter	45 mm		
Height	21.1 mm		
Style	Round		
Optic Material	-		
Holder Material	-		
Fastening	["tape"]		
Status	Production ready		

**Product number CA14591\_BROOKE-XW**

Family	Brooke	FWHM	86 degrees
Type	RefAssy	Efficiency	94 %
LED	BXRA ES Rectangle	cd/Im	0.530
Color	White	Gerber File	Available
Diameter	45 mm		
Height	21.1 mm		
Style	Round		
Optic Material	-		
Holder Material	-		
Fastening	""		
Status	Production ready		

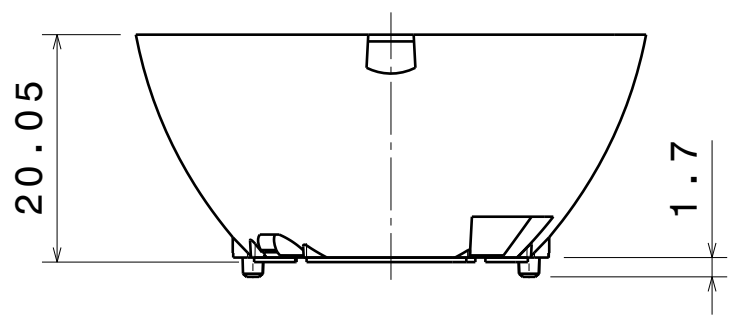


## PRODUCT DATASHEET

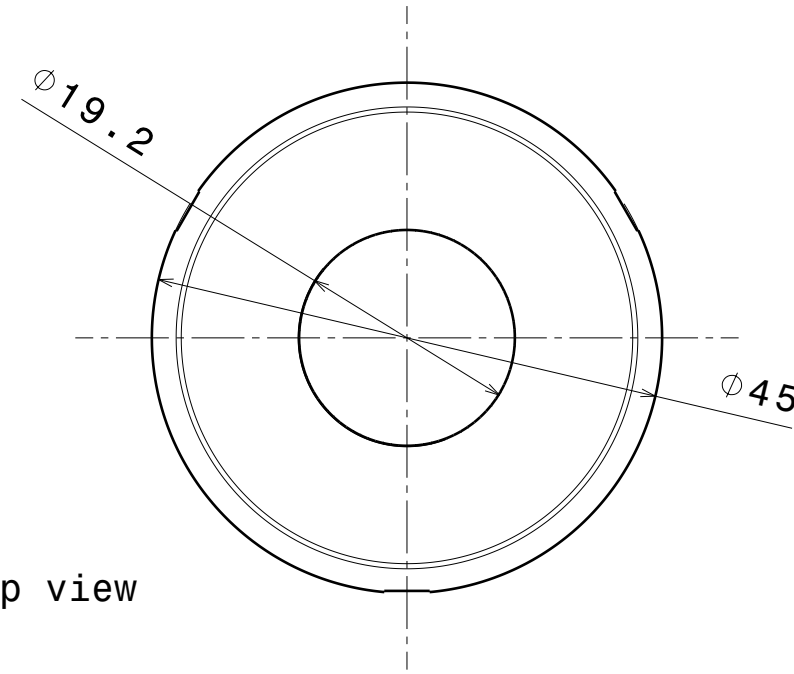
### Brooke series

last update 16/1/2017

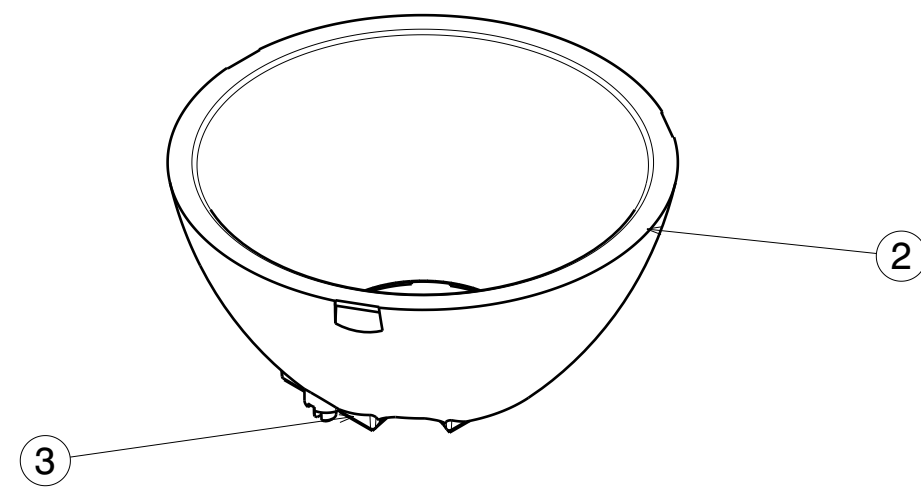
**NOTE:** The typical divergence will be changed by different color, chip size and chip position tolerance. The typical total divergence is the full angle measured where the luminous intensity is half of the peak value.



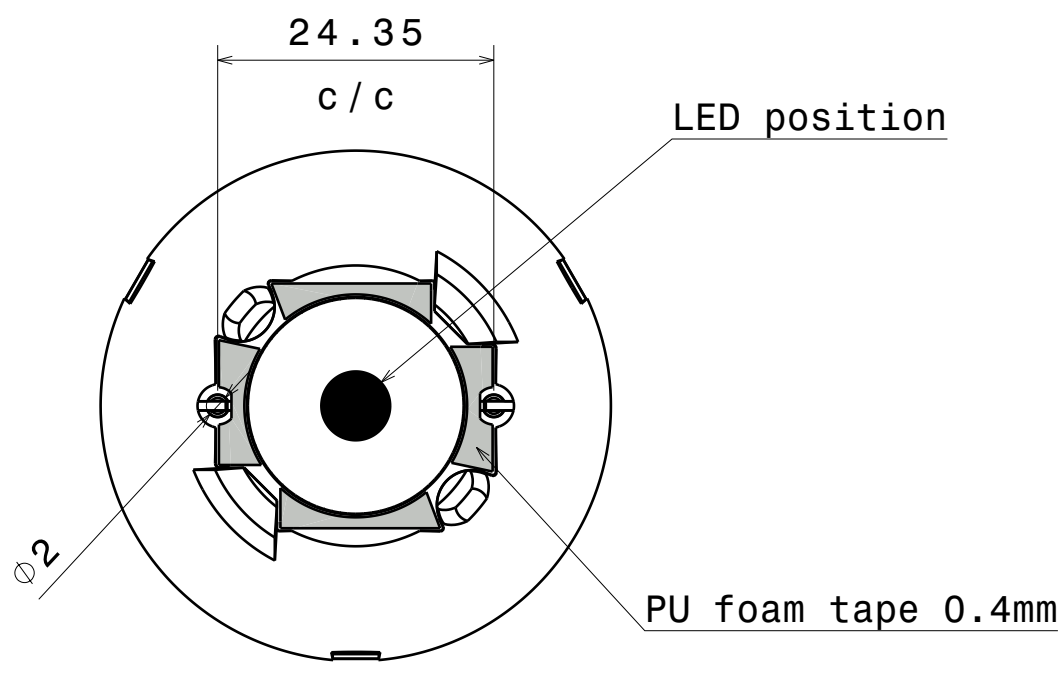
Front view



Top view



Isometric view

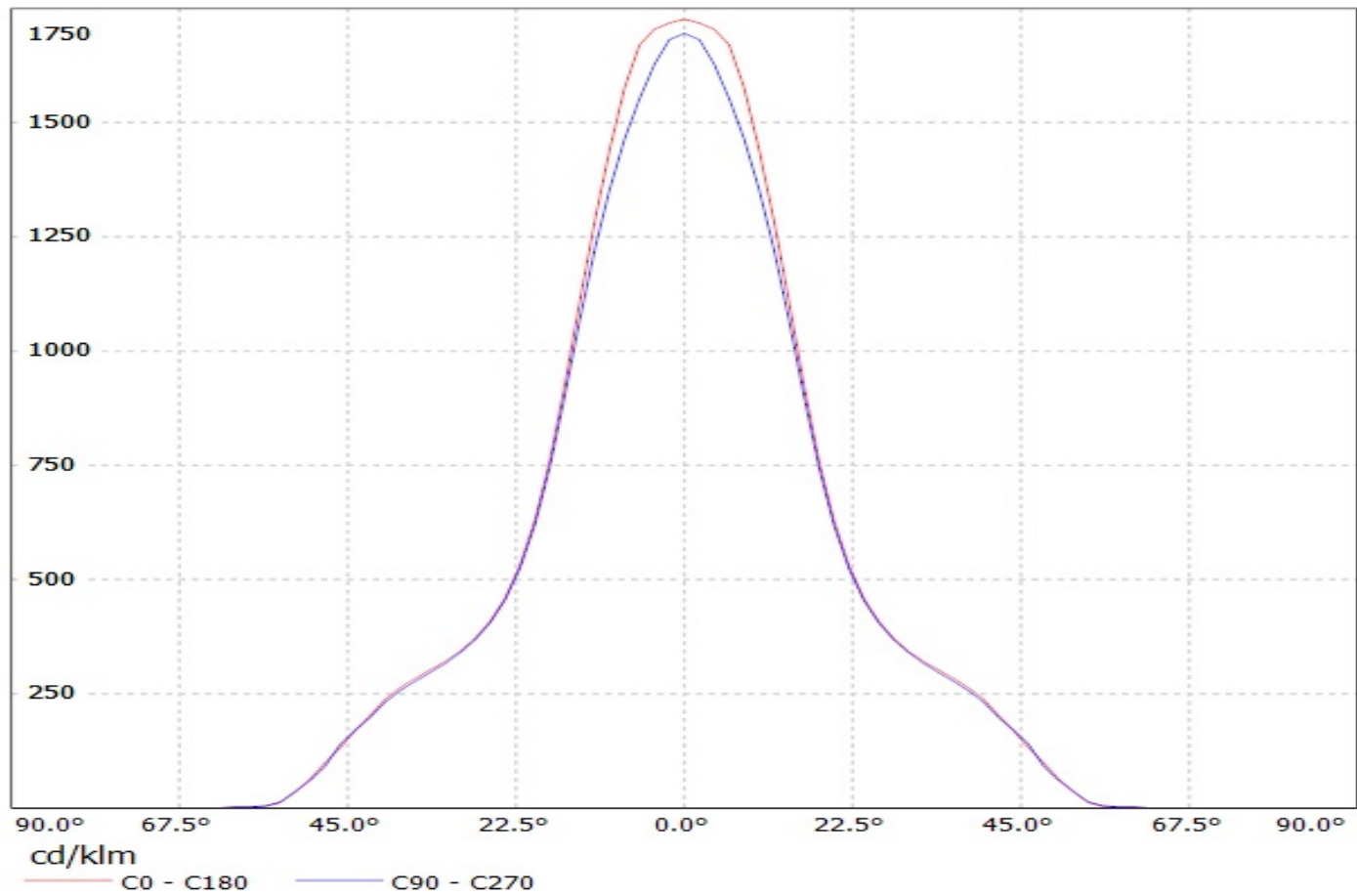


Bottom view

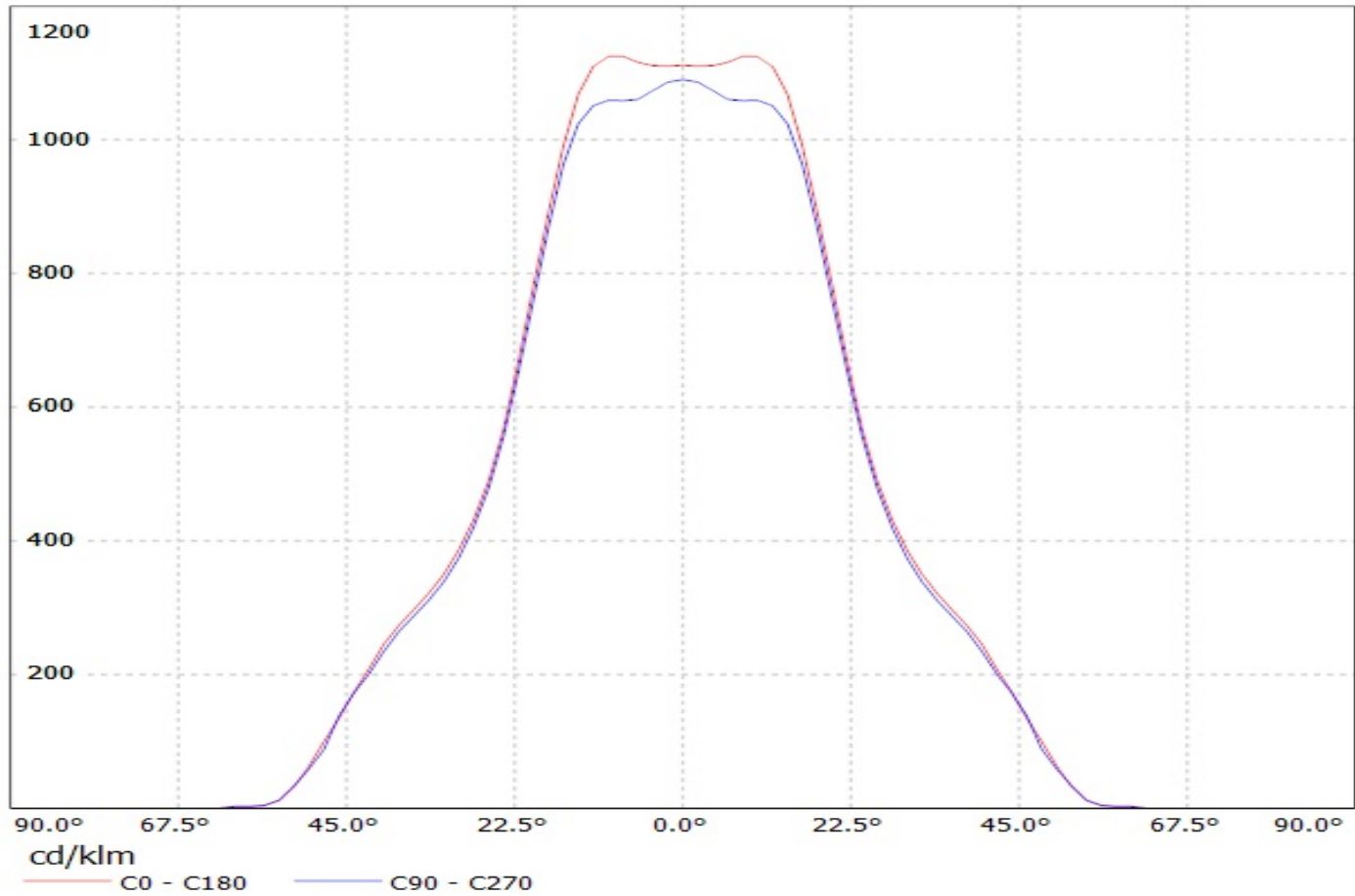
INDEX	PART NO	DESCRIPTION	MATERIAL	COLOUR
1	C14528	BROOKE-XW	PC	white

<div>Tolerances if not otherwise shown According to DIN ISO 2768-1 Linear measures: Up to 30mm class M, otherwise class C According to DIN ISO 2768-2 Form and position: class L</div> <div>THIRD ANGLE PROJECTION: </div> <div>This drawing is the property of LEDiL Oy. It may not be reproduced, copied or communicated without a written agreement with LEDiL Oy.</div>		<div><div>LEDiL</div><div>LediL Oy Salorankatu 10 FIN 24240 SALO Finland</div></div>		
		<div>DRAWING TITLE</div> <div>CA14591_BROOKE-XW</div>		
SIZE		PART NUMBER		
A3		CA14591		
SCALE		3:2	WEIGHT	4,74 g
			SHEET	1 / 1

Luminaire: Ledil Oy CA11182\_Brooke-M CA11182\_Brooke-M  
Lamps: 1 x Bridgelux BXRA-C0800

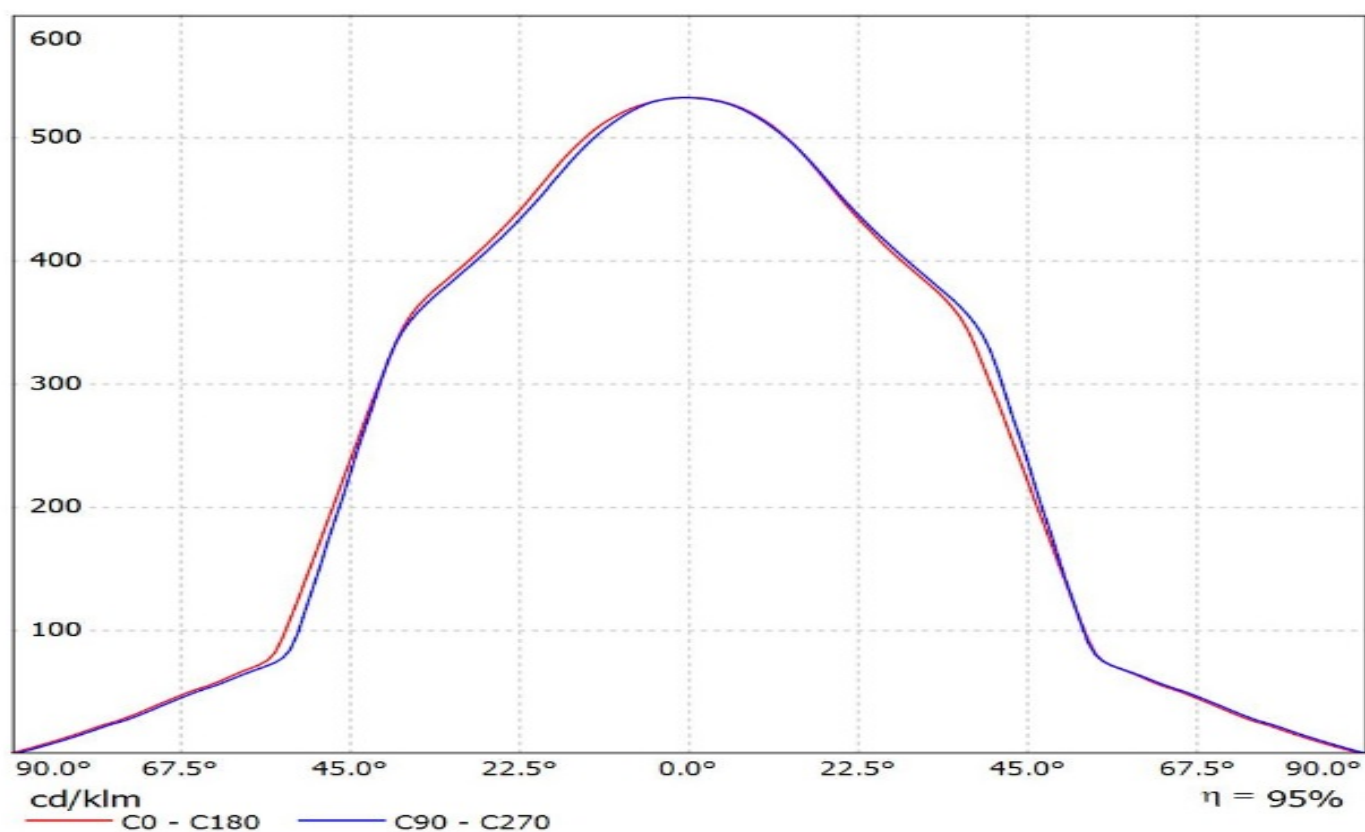


Luminaire: Ledil Oy CA11183\_Brooke-W CA11183\_Brooke-W  
Lamps: 1 x Bridgelux BXRA-C0800

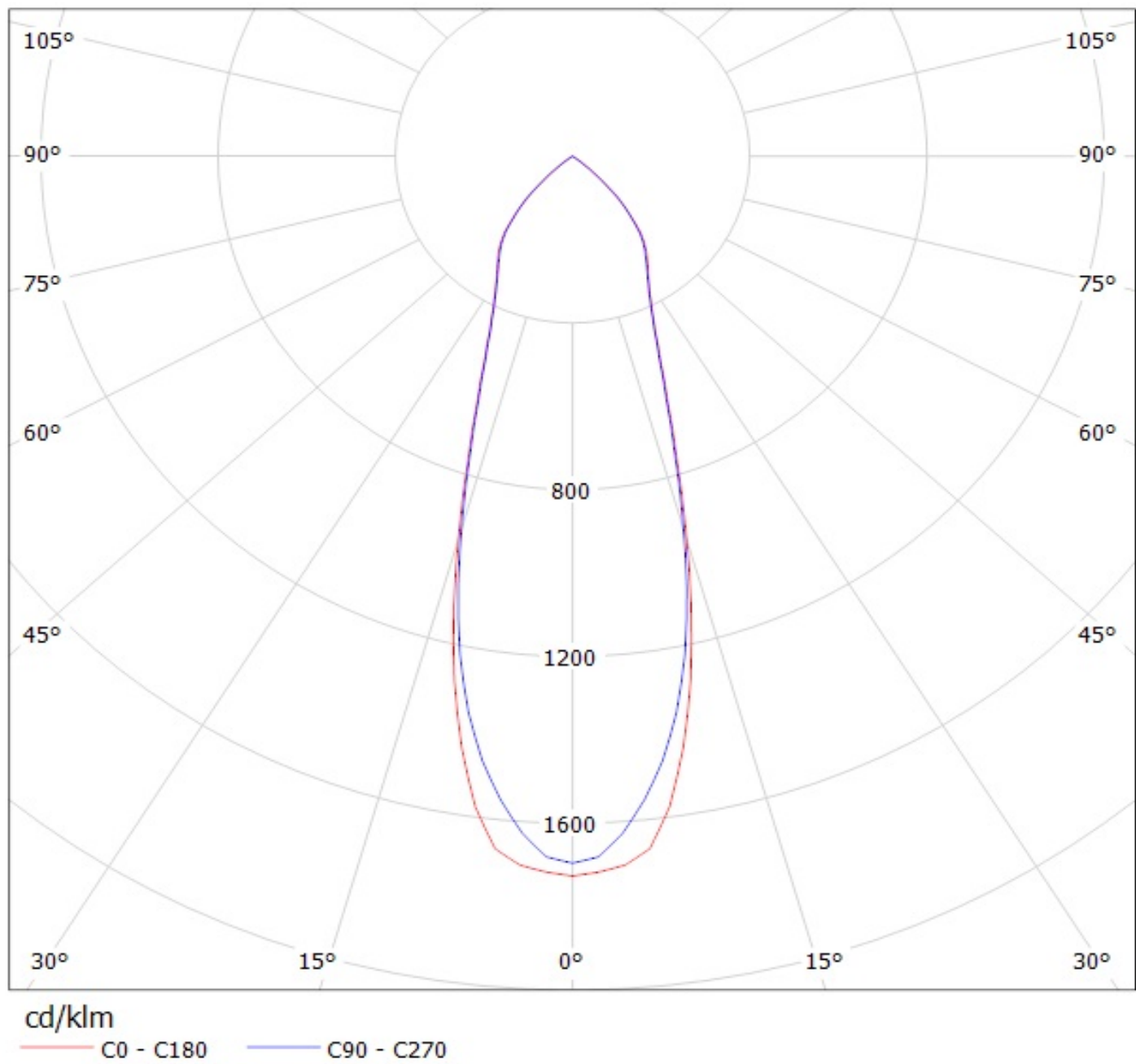


## Ledil CA14591\_BROOKE-XW\_(BXRA\_ES\_Rectangle) / LDC (Linear)

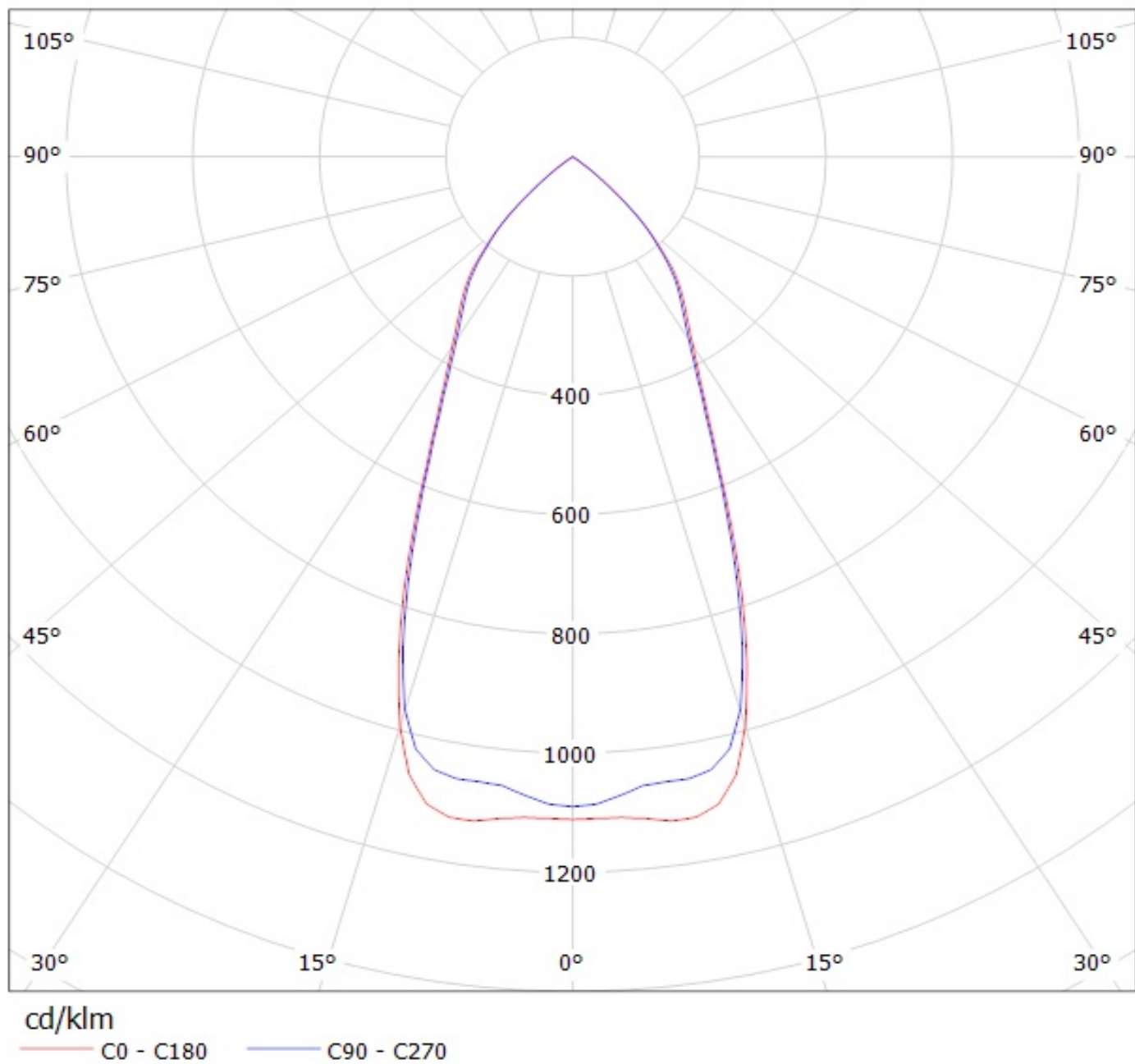
Luminaire: Ledil CA14591\_BROOKE-XW\_(BXRA\_ES\_Rectangle)  
Lamps: 1 x Bridgelux\_BXRA\_ES\_Rectangle\_(BXRA-330E2000-B-00)  
\_827.946lm@250mA\_P=8.26425W\_I=0.250A



Luminaire: Ledil Oy CA11182\_Brooke-M CA11182\_Brooke-M  
Lamps: 1 x Bridgelux BXRA-C0800



Luminaire: Ledil Oy CA11183\_Brooke-W CA11183\_Brooke-W  
Lamps: 1 x Bridgelux BXRA-C0800





## Ledil CA14591\_BROOKE-XW\_(BXRA\_ES\_Rectangle) / LDC (Polar)

Luminaire: Ledil CA14591\_BROOKE-XW\_(BXRA\_ES\_Rectangle)

Lamps: 1 x Bridgelux\_BXRA\_ES\_Rectangle\_(BXRA-330E2000-B-00)

\_827.946lm@250mA\_P=8.26425W\_I=0.250A

