
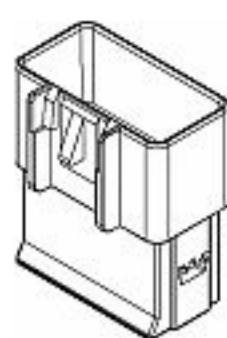


SEARCH KEYWORD, PART NUMBER 



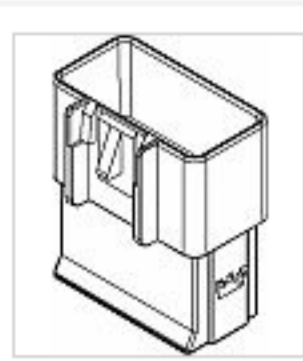
Part Number: 15336209

Product Name: [Generic Connectors](#)

12 Way M GT 150 280 Sealed

[Share](#) [Print](#) [Contact Us About This Item](#)

GET SAMPLES 

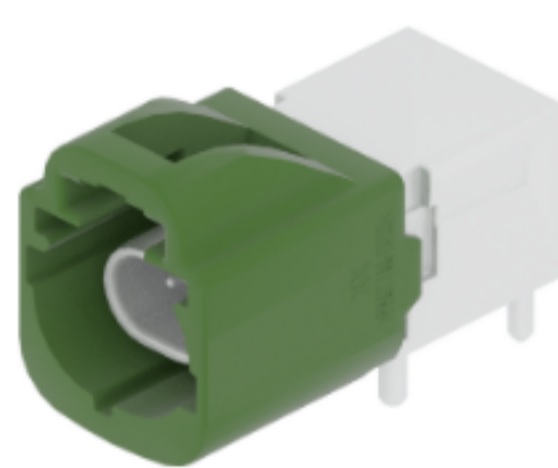


ATTRIBUTES DOCUMENTS ECAD COMPATIBLE PARTS

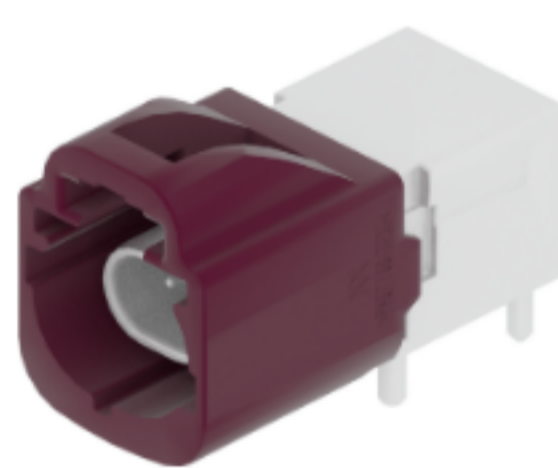
Attributes

Product Family Generic Connectors	Primary Locking Mechanism LOCKING LANCE
No. of Ways 12	Weight (g) 11.64387
Gender Male	Terminal 1 Size 1.5
Length (mm) 36.1	Terminal 2 Size 2.8
Width (mm) 32.1	Sealing Unsealed
Height (mm) 22.5	Primary Material PBT GF 20
Color BLACK	

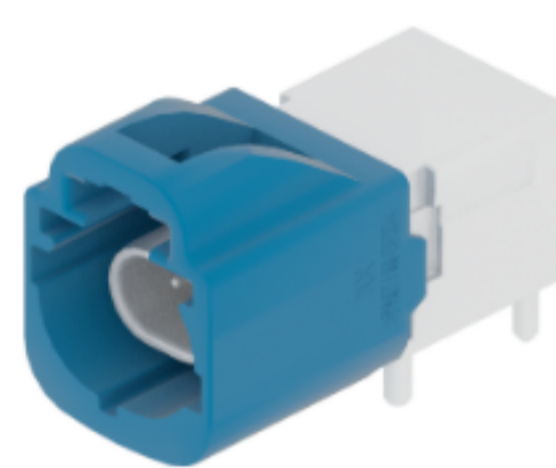
Other Products



35829171
2 Way Male 0.5 Unsealed Green



35829170
2 Way Male 0.5 Unsealed Violet

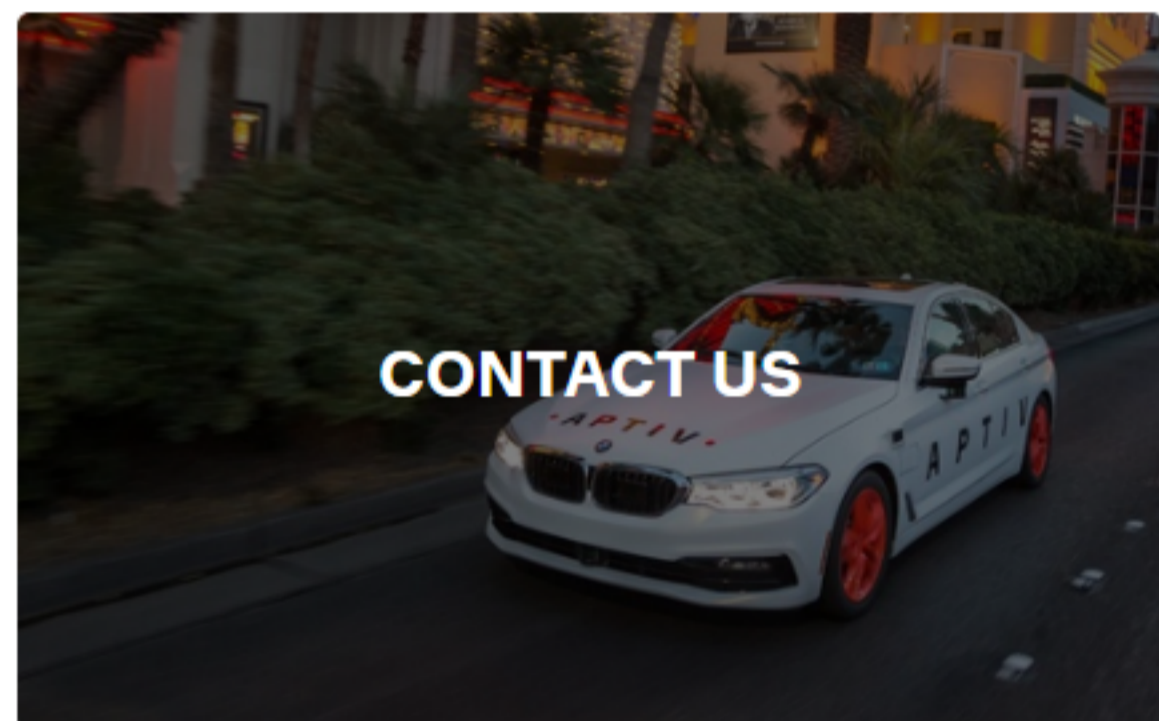


35829169
2 Way Male 0.5 Unsealed Blue

RESOURCE-CENTER-ITEM
COV CONN CLIP CDT BLACK



Next Steps



Keep pace with where mobility is going.

See what's next and get the latest updates.

SIGN UP TO GET UPDATES 

Don't worry. We won't flood your inbox or share your email.

INSIGHTS

- EXPLORE ALL ARTICLES
- CASE STUDIES
- MOBILITY INSIDER
- RESEARCH PUBLICATIONS
- WHITE PAPERS

SOLUTIONS

- Advanced Safety
- Connected Services
- Connection Systems
- Connectivity and Security
- Electrical Distribution Systems
- Middleware & DevOps
- Smart Vehicle Architecture
- User Experience
- Vehicle Electrification Systems
- HellermannTyton
- Intercable Automotive Solutions
- Motional
- Winchester Interconnect
- Wind River

CATALOG

ABOUT

- Our Mission
- Our Businesses
- Our Locations
- Our Foundation
- Sustainability
- Suppliers

PRIVACY

- Terms of Use
- Cookie Policy

LEGAL & COMPLIANCE

CAREERS

- INVESTORS
- NEWSROOM
- CONTACT