



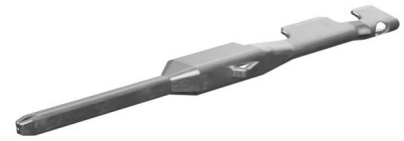
Part Number : [330001003](#)

Product Description : MX150 Male Terminal for Mat-Sealed or Unsealed Connectors, Tin Plating, 22 AWG, Left Reel Payoff

Series Number : 33000

Status : Active

Product Category : Crimp Terminals



Documents and Resources

Drawings

[330001003_sd.pdf](#)

[313025040-000.pdf](#)

[STEP AP242](#)

[SOLIDWORKS](#)

[Creo](#)

Specifications

[AS-33000-001-001.pdf](#)

[AS-33000-001-FR-001.pdf](#)


[AS-33000-001-001.pdf](#)

[PS-33012-002-001.pdf](#)

[TS-33000-001-001.pdf](#)

Product Environment Compliance

Compliance

| | |
|--------------------|---|
| GADSL/IMDS | Compliant with Exemption 34; 33 |
| China RoHS |  per SJ/T 11365-2006 |
| EU ELV | Compliant per 2000/53/EC |
| Low-Halogen Status | Low-Halogen per IEC 61249-2-21 |
| REACH SVHC | Not Contained per D(2025)7771-DC (04 Feb 2026) |
| EU RoHS | Compliant per EU 2015/863 |

Compliance Statements

- EU RoHS
- REACH SVHC
- Low-Halogen

Industry Documents

- IPC 1752A Class C
- IPC 1752A Class D
- Molex Product Compliance Declaration
- IEC-62474
- chemSHERPA (xml)

Substances of Interest

- PFAS

EU RoHS Certificate of Compliance

Additional Product Compliance Information

Part Details

General

| | |
|--------------|--|
| Status | Active |
| Category | Crimp Terminals |
| Series | 33000 |
| Description | MX150 Male Terminal for Mat-Sealed or Unsealed Connectors, Tin Plating, 22 AWG, Left Reel Payoff |
| Application | Power, Wire-to-Board, Wire-to-Wire, Automotive |
| Comments | Left Reel Payoff |
| Product Name | MX150 |
| UPC | 756054586242 |

Electrical

| | |
|-------------------------------|---------------|
| Current - Maximum per Contact | Contact Molex |
| Voltage - Maximum | 14V DC |

Physical

| | |
|--------------------------------|------|
| Durability (mating cycles max) | 25 |
| Gender | Male |
| Grip Code | 22 |

| | |
|--------------------------------|------------------------------|
| Material - Metal | High Performance Alloy (HPA) |
| Material - Plating Mating | Tin |
| Material - Plating Termination | Tin |
| Net Weight | 0.415/g |
| Packaging Type | Reel |
| Plating min - Mating | 0.508µm |
| Plating min - Termination | 0.508µm |
| Termination Interface Style | Crimp or Compression |
| Wire Insulation Diameter | 1.65mm max. |
| Wire Size (AWG) | 22 |
| Wire Size mm ² | 0.50 |

Solder Process Data

| | |
|------------------------------|-----|
| Lead-Free Process Capability | N/A |
|------------------------------|-----|

Mates With / Use With

Use with Part(s)

| Description | Part Number |
|---|-----------------------|
| MX150 Mat-Sealed Single Row Male Connector Assemblies | 33481 |
| MX150 Mat-Sealed Dual Row Male Connector Assemblies | 33482 |

Application Tooling

Global

| Description | Part Number |
|---|----------------------------|
| Extraction Toolkit for MX150 Connectors | 2002220700 |
| PremiumGrade Hand Crimp Tool for 1.50mm MX150 Blade Male Terminals, 22-18 AWG | 638112600 |
| Extraction Tool for MX150L, MX150, PT Bulb Socket, iGrid, SPOX, and Wire-to-Motor | 638131500 |

| | |
|---|------------------|
| Terminals | |
| FineAdjust Applicator for MX150 Male Terminals, 22 AWG and 0.50mm ² wire | <u>639000600</u> |

This document was generated on May 05, 2026