

DEVELOPMENT BOARD ENCLOSURES

RASPBERRY PI STYLE ENCLOSURES

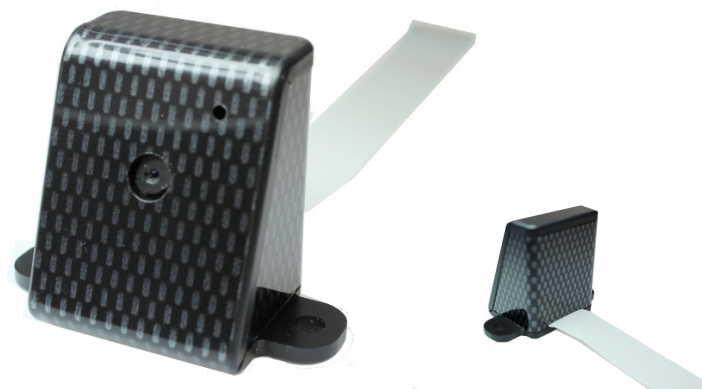
Pi Camera Enclosures

No screws, no glue – just add your **Raspberry Pi** Camera!

- Designed to house the **Pi Camera** via clip-in grooves - **NO SCREWS REQUIRED!**
- All cut-outs are pre-cut into the case - **NO MODS REQUIRED!**
- Wall mountable
- High gloss finish

Material:

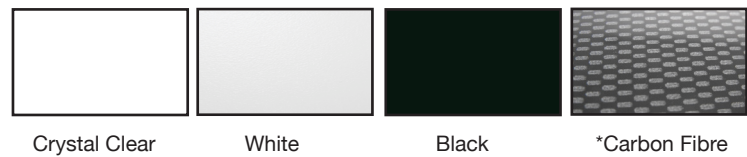
- Thickness 3mm: HB Rated
- Coloured materials: High Impact Polystyrene (HIPS)
- Carbon Fibre finish: Acrylic Capped ABS



Raspberry Pi Camera not included

CB PART NO.	COLOURS
CBRPC-WHT-NL	White
CBRPC-CAR-NL	Carbon Fibre
CBRPC-BLK-NL	Black
CBRPC-CLR-NL	Crystal Clear

Available in a range of colours: Gloss Finish



Other colours available upon request



UNIVERSAL
ENCLOSURES

HAND
HELD
CASES

HEAVY
DUTY
ENCLOSURES

DIN
RAIL
ENCLOSURES

INTERFACE
SUPPORTS

ELECTRICAL
ENCLOSURES

DIECAST
& METAL
ENCLOSURES

DESKTOP &
INSTRUMENT
CASES

MULTI-PURPOSE
& POTTING
BOXES

19"
ENCLOSURES

19"
CABINETS

DEVELOPMENT
BOARD
ENCLOSURES

CUSTOM
SIZED
ENCLOSURES

FSPT/CUSTOM
SERVICES



+44 (0)1638 716101
info@camdenboss.com
www.camdenboss.com

We operate a constant improvement policy,
our products are subject to change without notice. Ver 1.0
Iss 1

