




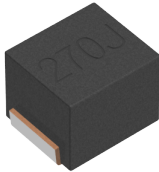


Applications	 Commercial Grade
Feature	 No Directivity
	 Wire Wound
	 Ferrite Core
Series Type	NLV25-EF
Status	 Production
Brand	TDK

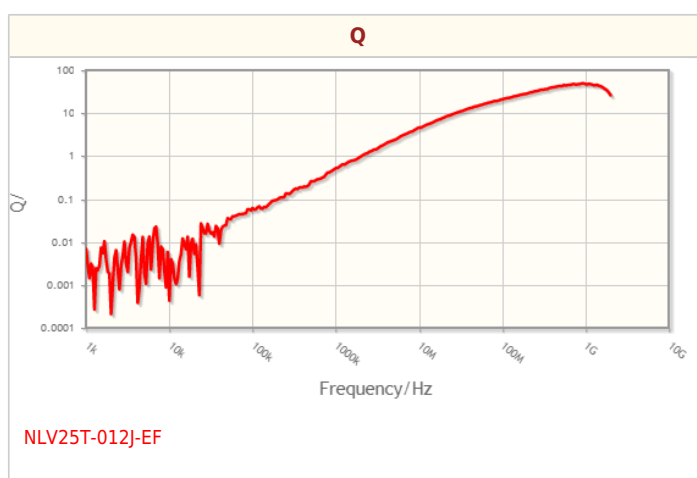
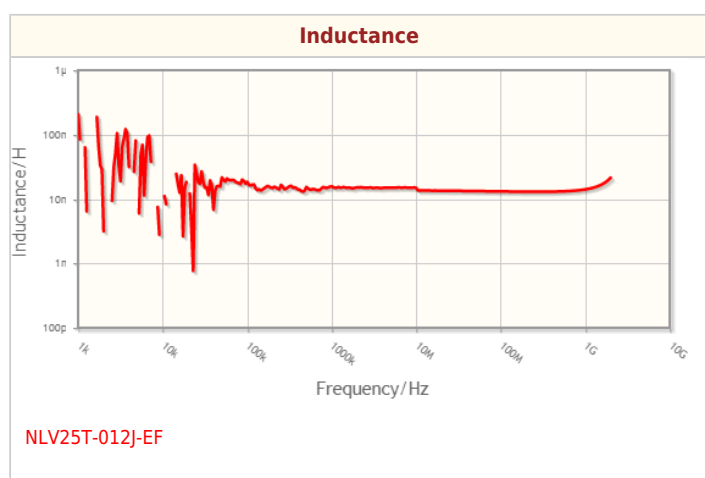
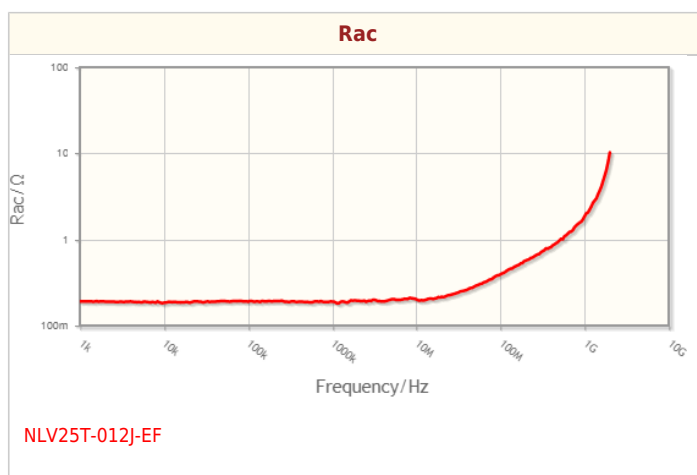
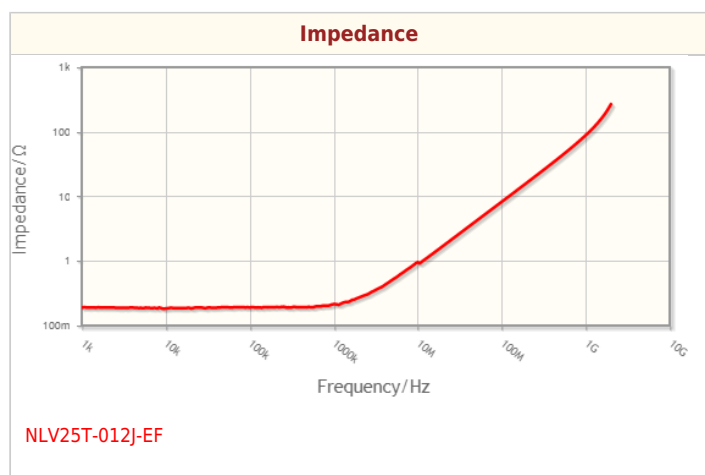


Size	
Length(L)	2.50mm ±0.20mm
Width(W)	2.00mm ±0.10mm
Thickness Height	1.80mm ±0.10mm
Recommended Land Pattern (A)	1.00mm Nom.
Recommended Land Pattern (B)	1.50mm Nom.
Recommended Land Pattern (C)	1.50mm Nom.

Electrical Characteristics	
Inductance	12nH ±5% at 100MHz
Rated Current	500mA
DC Resistance [Typ.]	
DC Resistance [Max.]	270mΩ
Self Resonant Frequency [Min.]	2.05GHz
Self Resonant Frequency [Typ.]	
Q [Min.]	15 at 100MHz
Q [Typ.]	

Other	
Operating Temp. Range (Including Self-Temp. Rise)	-40 to 105°C
Soldering Method	Wave (Flow)
	Reflow
	Iron Soldering
AEC-Q200	NO
Packing	Embossed (Plastic)Taping [180mm Reel]
Package Quantity	2000pcs
Weight	0.025g

Characteristic Graphs(This is reference data, and does not guarantee the products characteristics.)



Associated Images

