

## Single Row PCB Connectors, French Railways approved

- 12 HC contacts Ø 0.76 mm
- 1 row PCB connector
- 2.54 mm pitch
- 3 mm Width
- 5000 mating-unmating cycles

## Technical Characteristics

<b>MATERIAL</b>		<b>MOUNTING</b> By screw. Bracket mounting option available only for receptacle	
Insulator	Thermoset	<b>GUIDING PINS</b> 2 overmoulded keying systems in the plug	
Pin & socket body	Brass	<b>DIELECTRIC WITHSTANDING VOLTAGE</b> 1300 VRMS	
Socket wires	Copper alloy	<b>CURRENT RATING</b> 4 A Max (25 °C)	
Guides	Brass	<b>INSULATION RESISTANCE</b> > 10 <sup>6</sup> MΩ (500 Vcc)	
<b>PLATING</b>		<b>CONTACT RESISTANCE</b> < 5 mΩ	
Pin and socket wires	Au/Ni	<b>TEMPERATURE RANGE</b> -55 °C, +125 °C	
Guides	Ni		
<b>PITCH</b> 2.54 mm			
<b>PIN</b> Ø 0.76 mm, non-removable			

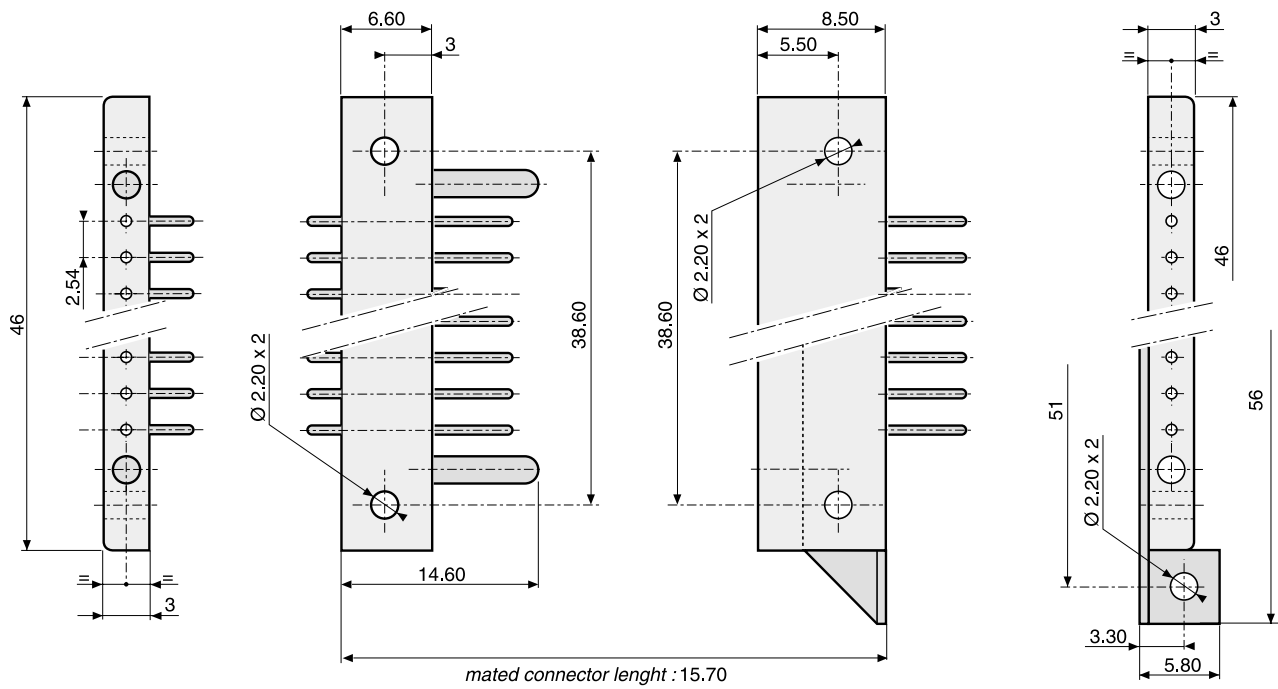
## Ordering information

SERIES		K	G	A	012	--	--	---
MODEL								
1 row								
NUMBER OF CONTACTS								
012								
PART - POLARITY - PLATING								
13	Male plug	22	Female receptacle					
17	Male plug, tinned terminations*	26	Female receptacle, tinned terminations*					
TERMINATIONS								
10	Bent 90°	40	Solder cup					
30	Straight							
MOUNTING								
117	Transverse mounting (plug)	117	Transverse mounting (receptacle)			120	Axial mounting (receptacle)	
*Tin plating is only available for bent or straight terminations (10 and 30)								

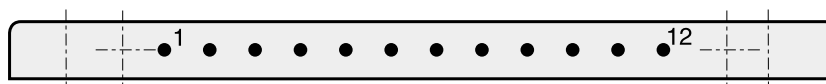
## Connector dimensions

**Plug**

**Receptacle**



## Contact layout



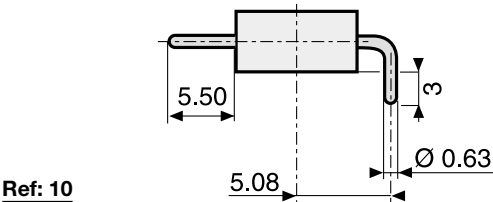
Wiring side view

Dimensions are in mm

Terminations

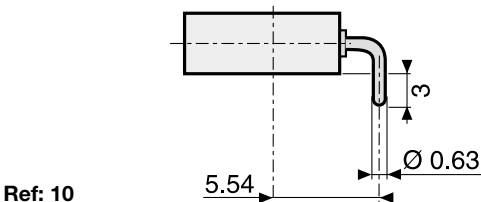
Plug

90° termination

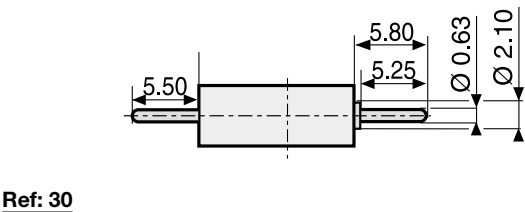


Receptacle

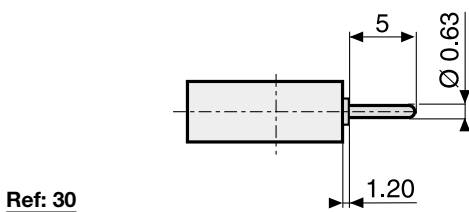
90° termination



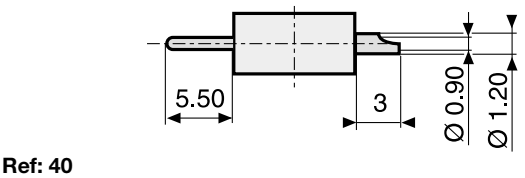
Straight



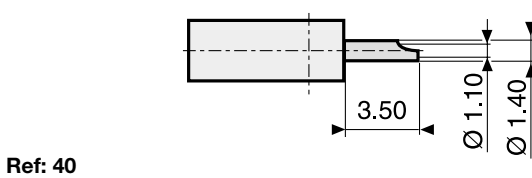
Straight



Solder cup



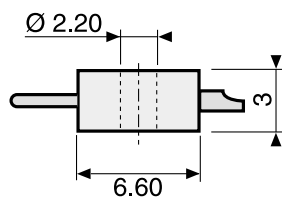
Solder cup



## Mounting

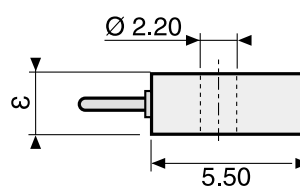
### Plug

#### *Standard transverse*



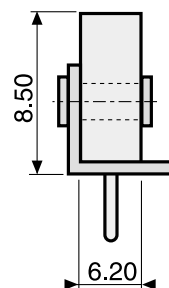
### Receptacle

#### *Transverse*



Ref: 117

#### *Vertical*

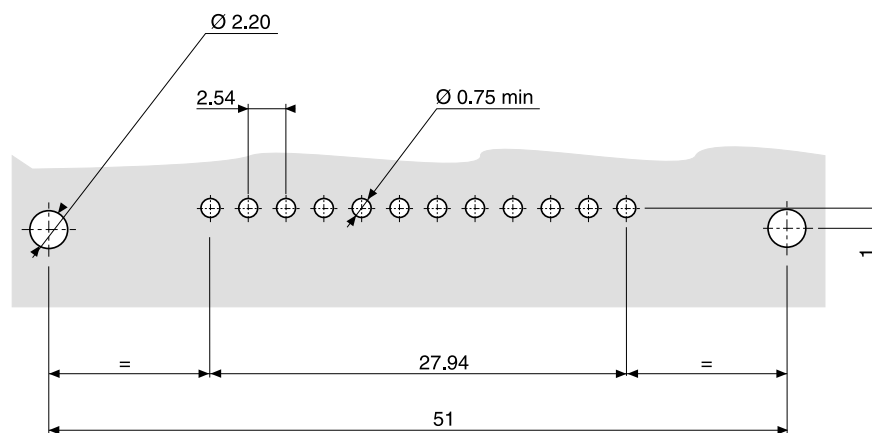


Ref: 120

Dimensions are in mm

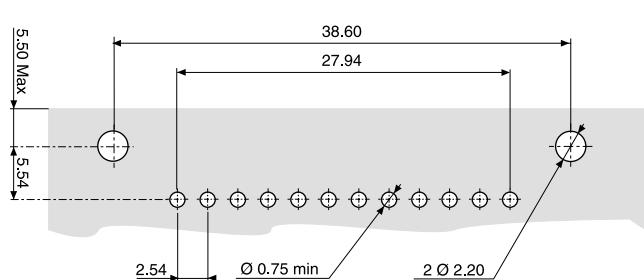
## Board and panel preparation details

### Mother board

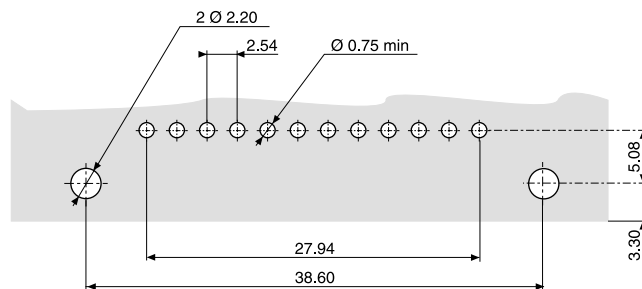


For vertical mounting receptacle

### Daughter board

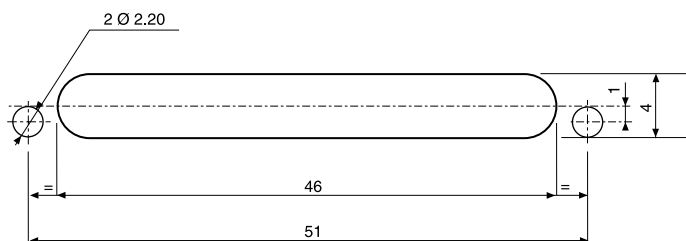


Bent termination receptacle



Bent termination plug

### Panel



Vertical mounting receptacle

#### Notes

PCB and panel connector wiring side view

Dimensions are in mm