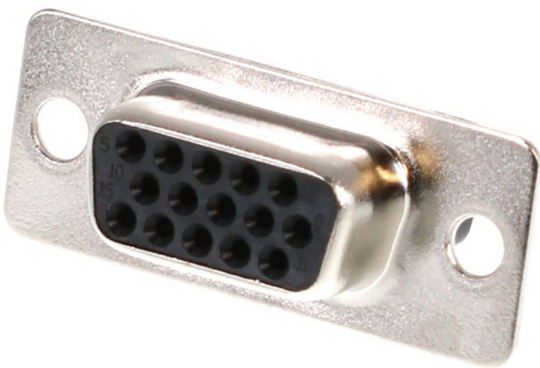




Part Number : 1731130073  
Product Description : FCT High-Density D-Sub  
Crimp Housing, Female, 15 Circuits  
Series Number : 173113  
Status : Active  
Product Category : D-Sub Connectors  
Engineering Number : CT09-15S7




Documents & Resources

Specifications  
[1731120006-PK-000.pdf](#)

Product Environment Compliance

Compliance

GADSL/IMDS	Not Relevant
China RoHS	
EU ELV	Not Relevant
Low-Halogen Status	Not Reviewed per IEC 61249-2-21
REACH SVHC	Not Contained per D(2024)7663-DC (21 Jan 2025)
EU RoHS	Compliant per EU 2015/863

Multiple Part Product Compliance Statements

- Eu RoHS
- REACH SVHC
- Low-Halogen

Multiple Part Industry Compliance Documents

- IPC 1752A Class C
- IPC 1752A Class D
- Molex Product Compliance Declaration
- IEC-62474

## Part Details

### General

Status	Active
Category	D-Sub Connectors
Series	173113
Description	FCT High-Density D-Sub Crimp Housing, Female, 15 Circuits
IP Rating	IP20
Magnetic	Yes
Product Name	FCT Products
Type	High Density
UPC	889056489867

### Electrical

Shielded	Yes
----------	-----

### Physical

Circuits (Loaded)	0
Circuits (maximum)	15
Color - Resin	Black
Gender	Female
Material - Resin	PBT
Material - Shell	Steel
Net Weight	5.000/g
Number of Rows	3
Orientation	Straight
Packaging Type	Tray
Panel Mount	Rear
Panel Mount Method	Flange
PCB Locator	No
PCB Retention	None
Pitch - Mating Interface	1.98mm

Pitch - Termination Interface	1.98mm
Plating - Shell	Nickel
Polarized to Mating Part	Yes
Ports	1
Temperature Range - Operating	-55° to +105°C
Termination Style	Crimp
Waterproof / Dustproof	No
Waterproof / Dustproof Type	IP20
Wire Size (AWG)	22, 24, 26, 28

---

## Mates With / Use With

### Mates with Part(s)

Description	Part Number
Mates With	FCT High-Density D-Sub, Size 1, 15 Position, Plug

### Use with Part(s)

Description	Part Number
FCT Machined Contact, Female, Crimp, 0.20µm Gold Plating, Split Tine, 28-22 AWG, 500 Pieces	<u>1731120226</u>
FCT Machined Contact, Female, Crimp, 0.80µm Gold Plating, Split Tine, 28-22 AWG, 500 Pieces	<u>1731120227</u>
FCT Machined Contact, Female, Crimp, 1.30µm Gold Plating, Split Tine, 28-22 AWG, 500 Pieces	<u>1731120228</u>

---

This document was generated on Mar 26, 2025