

**SPECIFICATIONS:**

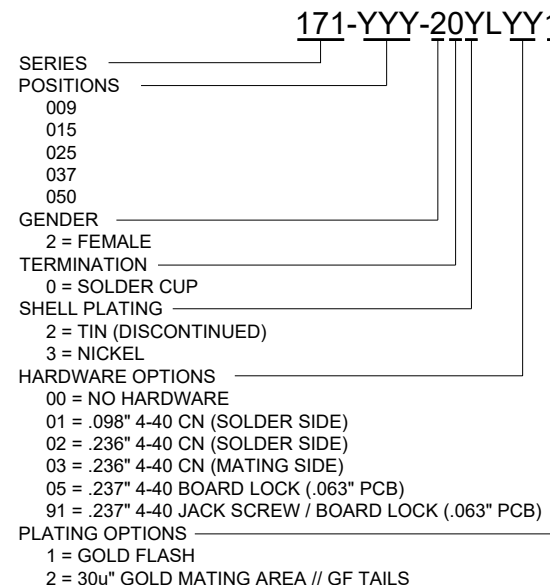
**MATERIALS:**

SHELL: NICKEL OR TIN PLATED STEEL  
 INSULATOR: PBT +30% GF, UL 94V-0, BLACK  
 CONTACTS: COPPER ALLOY, GOLD PLATED

**ELECTRICALS:**

CURRENT RATING: 5 AMPS  
 CONTACT RESISTANCE: 15 mOHMS MAX  
 INSULATOR RESISTANCE: 1000 MOHMS MIN  
 VOLTAGE: 500V AC FOR 1 MINUTE  
 WORKING VOLTAGE: 250 VAC  
 TEMPERATURE: -50°C TO +100°C

DIMENSIONS (in/mm)						
POS.	A	B	C	D	E	F
9	1.213	0.984	0.642	0.756	0.311	0.496
	30.80	24.99	16.30	19.20	7.90	12.60
15	1.541	1.312	0.971	1.091	0.311	0.496
	39.15	33.32	24.65	27.70	7.90	12.60
25	2.087	1.853	1.512	1.618	0.311	0.496
	53.00	47.04	38.40	41.10	7.90	12.60
37	2.728	2.500	2.157	2.256	0.311	0.496
	69.30	63.50	54.80	57.30	7.90	12.60
50	2.638	2.406	2.055	2.169	0.429	0.602
	67.00	61.00	52.20	55.10	10.90	15.30



**WILL ACCEPT 28-20 AWG CONDUCTORS**

UNITS = INCHES [MM] DO NOT SCALE FROM DRAWING

RoHS COMPLIANT



THESE DRAWINGS AND SPECIFICATIONS ARE THE PROPERTY OF NorComp AND SHALL NOT BE REPRODUCED, COPIED OR USED AS THE BASIS FOR THE MANUFACTURE OR SALE OF APPARATUS WITHOUT WRITTEN PERMISSION.

DRAWN:

J. KADEL

DATE:

07/24/2018

NorComp

SCALE: NTS

SHEET 1 OF 2

REV 16

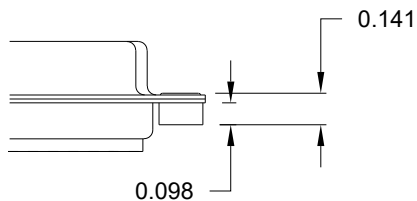
DWG NO.

171-YYY-20YLYY1

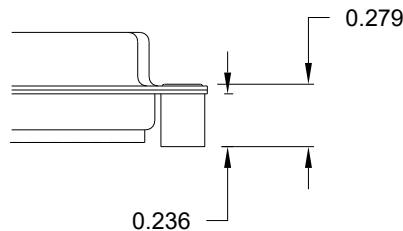
**TOLERANCE:**  
ALL DIMENSIONS ARE  $\pm 0.010$

**ALL CLINCH-NUTS ARE 4-40 INTERNAL THREADS**

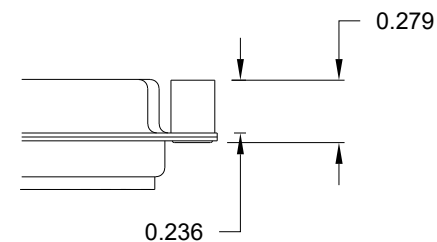
01 ..... 0.098" (SOLDER SIDE)



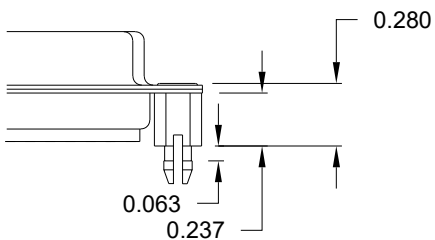
02 ..... 0.236" (SOLDER SIDE)



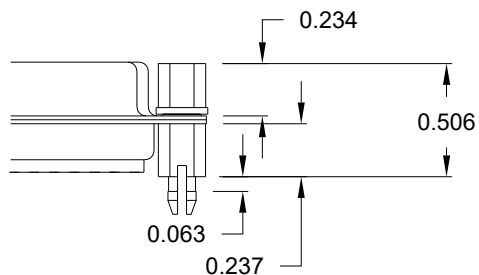
03 ..... 0.236" (MATING SIDE)



05 ..... 0.237" (SOLDER SIDE)



91 ..... 0.237" (SOLDER SIDE)



NOTE: 4-40 FEMALE SCREW LOCK IS REMOVABLE

**RoHS COMPLIANT**

UNITS = INCHES

**DO NOT SCALE FROM DRAWING**



THESE DRAWINGS AND SPECIFICATIONS ARE THE PROPERTY OF NorComp AND SHALL NOT BE REPRODUCED, COPIED OR USED AS THE BASIS FOR THE MANUFACTURE OR SALE OF APPARATUS WITHOUT WRITTEN PERMISSION.

DRAWN:

J. KADEL

DATE:

07/24/2018

**NorComp**

SCALE:

NTS

SHEET

OF

2

2

REV

16

DWG NO.

171-YYY-20YLYY1