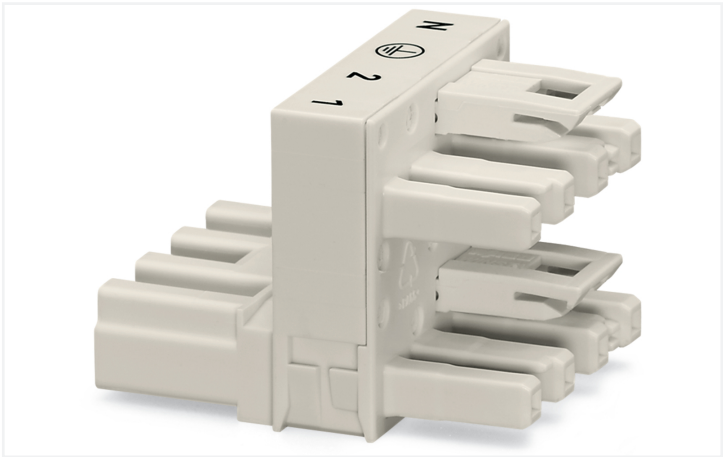


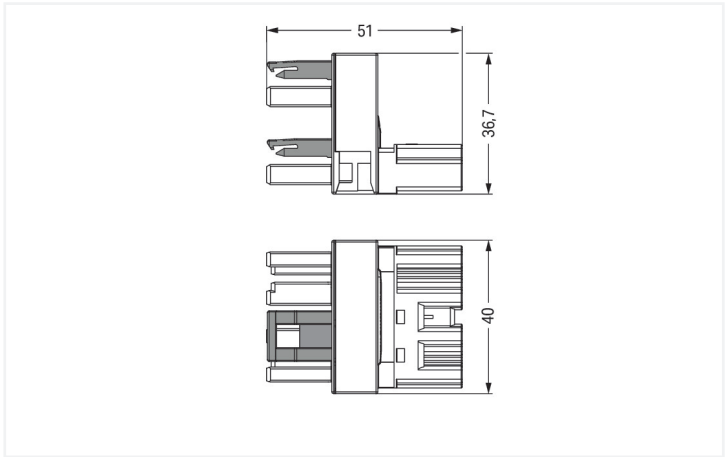
Data Sheet | Item Number: 770-994

h-distribution connector; 4-pole; Cod. A; 1 input; 2 outputs; outputs on one side; 2 locking levers; white

<https://www.wago.com/770-994>



Color: white



Dimensions in mm

Distribution connector WINSTA® MIDI 4-pole

Use effective pluggable connections instead of laborious screw connections: With the WINSTA® MIDI distribution connector rated current 25 A. Our pluggable installation connectors with spring pressure connection technology function completely without screw connections. They allow flexible, error-free installation in numerous applications. The mechanical coding and color coding of the pluggable installation connector ensure error-free installation of the individual components – including protection against mismating. The pluggable installation connector is protected against ingress by solid objects in accordance with protection type IP20 (When mated: IP2xC (These compact connectors are not designed for use in open, easily accessible areas!)). Thanks to the color coding and mechanical A coding of WINSTA® MIDI pluggable installation connectors, you can clearly distinguish different circuits. This pluggable installation connector can be used for a voltage load of up to 25 A. Thus, it can also be used for high power loads. WINSTA® MIDI with Push-in CAGE CLAMP® spring pressure connection technology is found in can be found in a variety of projects you can use for quick, easy, flexible, and secure installation.

Lower costs through fast commissioning and elimination of service expenses – solutions from WINSTA® MIDI

WINSTA® is the pluggable connection system that is optimally tailored to the strict requirements of electrical installation. It allows fast, secure and, above all, error-free installation of components and cables. Enjoy the benefits of the pluggable version of our maintenance-free spring pressure connection technology too! Plan your installation with with protection type IP20 from WAGO.

- pluggable installation connectors with protection against mismating
- pre-assembled versions
- for any mains application
- ready for immediate use
- fast, secure installation

Electrical data				
Ratings per		IEC/EN 60664-1		
Overvoltage category		III	III	II
Pollution degree		3	2	2
Nominal voltage		400 V	-	-
Rated surge voltage		6 kV	-	-
Rated current		25 A	-	-
Approvals per		UL 1977		
Rated voltage		600 V		
Rated current		23 A		
General information				
Note on contact resistance		approx. 1 mΩ of contact resistance approx. 0.25 mΩ contact transition plug/ socket		



Connection data		
Total number of potentials	4	Connection 1
PE function	Preceding PE contact	
		Pole number4
Physical data		
Pin spacing	10 mm / 0.394 inches	
Width	40 mm / 1.575 inches	
Height	36.7 mm / 1.445 inches	
Depth	51 mm / 2.008 inches	
Mechanical data		
Use	General mains applications	
Coding	A	
Marking	N ⊕ 2/L 1/L'	
Potential marking	N ⊕ 2/L 1/L'	
Mating force of a plug-in connection	Approx. 20 ... 70 N (depending on pole number)	
Retention force of a plug-in connection	When locked: > 80 N	
Unmating force of a plug-in connection	Unlocked: approx. 20 ... 70 N (depending on pole number)	
Number of mating cycles	200, without resistive load	
Type of distribution box	h-distribution connector, outputs at one end	
Protection type	IP20; When mated: IP2xC (These compact connectors are not designed for use in open, easily accessible areas!)	
Plug-in connection		
Mismating protection	Yes	
Note on mismating protection	All WINSTA® components are 100% protected against mismating when: a.) plugging different numbers of poles b.) plugging while rotated 180 c.) plugging while laterally staggered d.) plugging one pole	
Locking lever	Yes	
Locking of plug-in connection	Locking lever	
Note on locking system	All connectors for mounted installations (snap-in versions for lighting fixtures or devices, all types of PCB and distribution connectors) are factory-equipped with locking levers to ensure plugs and sockets are securely locked. Additional locking levers are only required for flying leads (plug/socket).	
Number of locking levers	2	
Material data		
Note (material data)	Information on material specifications can be found here	
Color	white	
Insulation material (main housing)	Polyamide (PA66)	
Flammability class per UL94	V0	
Contact material	Copper or copper alloy; surface-treated	
Contact Plating	Tin	
Fire load	0.534 MJ	
Weight	31.6 g	



Environmental requirements	
Processing temperature	-5 ... +40 °C
Continuous operating temperature	-35 ... +85 °C
Note on continuous operating temperature	Insulating parts for temperatures ≤ 105 °C

Commercial data	
Product Group	20 (Winsta)
PU (SPU)	25 pcs
Packaging type	Box
Country of origin	DE
GTIN	4045454982041
Customs tariff number	85366990990

Product classification	
UNSPSC	39121402
eCl@ss 10.0	27-44-06-03
eCl@ss 9.0	27-44-06-03
ETIM 9.0	EC002567
ETIM 8.0	EC002567
ECCN	NO US CLASSIFICATION

Environmental Product Compliance	
RoHS Compliance Status	Compliant,No Exemption

Approvals / Certificates

General approvals



Approval	Standard	Certificate Name
cURus Underwriters Laboratories Inc.	UL 1977	E45171
cURus Underwriters Laboratories Inc.	UL 1059	E 45172

Downloads

Environmental Product Compliance

Compliance Search	
Environmental Product Compliance 770-994	



Documentation

Bid Text			
770-994	19.02.2019	xml 2.76 KB	↓
770-994	12.03.2015	doc 23.00 KB	↓

CAD/CAE-Data

CAD data	CAE data
2D/3D Models 770-994 ↓	WSCAD Universe 770-994 ↓
	ZUKEN Portal 770-994 ↓

1 Compatible Products

1.1 System counterpart

1.1.1 Cable assembly



Item No.: 771-9994/206-102
pre-assembled connecting cable; Eca; Plug/open-ended; 4-pole; Cod. A; H05VV-F 4G 1.5 mm²; 1 m; 1,50 mm²; white

Item No.: 771-9994/106-102
pre-assembled connecting cable; Eca; Socket/open-ended; 4-pole; Cod. A; H05VV-F 4G 1.5 mm²; 1 m; 1,50 mm²; white

Item No.: 771-9994/006-102
pre-assembled interconnecting cable; Eca; Socket/plug; 4-pole; Cod. A; H05VV-F 4G 1.5 mm²; 1 m; 1,50 mm²; white

1.1.2 Female connector/socket



Item No.: 770-224
Socket; 4-pole; Cod. A; 4,00 mm²; white

Item No.: 770-124
Socket; with strain relief housing; 4-pole; Cod. A; 4,00 mm²; white

1.1.3 Male connector/plug



Item No.: 770-234
Plug; 4-pole; Cod. A; 4,00 mm²; white

Item No.: 770-134
Plug; with strain relief housing; 4-pole; Cod. A; 4,00 mm²; white

1.2 Optional Accessories

1.2.1 Cover

1.2.1.1 Cover



Item No.: 770-201
Lockout cap; 12-pole, separable; for sockets; Plastic; black



Item No.: 770-221
Lockout cap; 12-pole, separable; for sockets; Plastic; white



Item No.: 770-360
Lockout cap; for plugs; 5-pole; separable; yellow

1.2.2 Installation

1.2.2.1 Mounting accessories



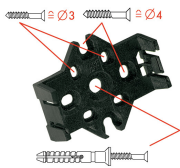
Item No.: 770-624
Mounting plate; 4-pole; for distribution connectors; Plastic; black



Item No.: 770-674
Mounting plate; 4-pole; for distribution connectors; Plastic; white

Installation Notes

Installation



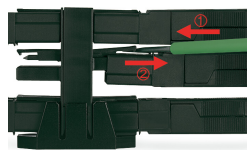
Mounting plates can be secured using commercially available screws or nail-drive anchors.



The distribution connectors snap together when attached to the mounting plate.



To release the distribution connector, unlock the latch using a screwdriver.



All distribution connector connections are locked and protected against accidental disconnection directly after mating. Locking of any connection is released using a screwdriver, even if all connections are used.