

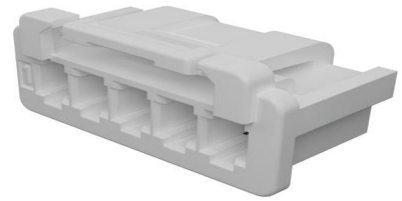
**Part Number :** [5023510500](#)

**Product Description :** DuraClik Wire-to-Board  
Receptacle Housing, Single Row, 5 Circuits, Natural

**Series Number :** 502351

**Status :** Active

**Product Category :** Connector Housings



---

## Documents and Resources

### Drawings

[5023510500\\_sd.pdf](#)

### 3D Models and Design Files

[STEP AP242](#)

[SOLIDWORKS](#)

[Creo](#)

### Specifications

[PK-502351-001-001.pdf](#)


[PS-502351-001-001.pdf \(Tin Plating\)](#)

[PS-502351-002-001.pdf \(Gold Plating\)](#)

---

## Product Environment Compliance

### Compliance

GADSL/IMDS	Compliant
China RoHS	 per SJ/T 11365-2006
EU ELV	Compliant per 2000/53/EC
Low-Halogen Status	Not Low-Halogen per IEC 61249-2-21
REACH SVHC	Not Contained per D(2025)7771-DC (04 Feb 2026)
EU RoHS	Compliant per EU 2015/863

### [Compliance Statements](#)

- EU RoHS

- REACH SVHC
- Low-Halogen

#### Industry Documents

- IPC 1752A Class C
- IPC 1752A Class D
- Molex Product Compliance Declaration
- IEC-62474
- chemSHERPA (xml)

#### Substances of Interest

- PFAS

#### EU RoHS Certificate of Compliance

#### Additional Product Compliance Information

## Part Details

### General

Status	Active
Category	Connector Housings
Series	502351
Description	DuraClik Wire-to-Board Receptacle Housing, Single Row, 5 Circuits, Natural
Application	Automotive, Signal, Wire-to-Board
Comments	Molex part has an inner-locking system versus an outer-locking system. Molex part with tail protection feature.
Product Name	DuraClik
UPC	884982894488

### Physical

Circuits (maximum)	5
Color - Resin	Natural
Gender	Receptacle
Glow-Wire Capable	No
Keying to Mating Part	Yes
Lock to Mating Part	Yes
Material - Resin	Polyester Alloy

Net Weight	0.227/g
Number of Rows	1
Packaging Type	Bag
Panel Mount	No
Pitch - Mating Interface	2.00mm
Pitch - Termination Interface	2.00mm
Polarized to Mating Part	Yes
Stackable	No
Temperature Range - Operating	-40° to +105°C

### Solder Process Data

Lead-Free Process Capability	N/A
------------------------------	-----

---

## Mates With / Use With

### Mates with Part(s)

Description	Part Number
DuraClik Right-Angle Single Row Headers	<a href="#">502352</a>
DuraClik Vertical Single Row Headers	<a href="#">560020</a>

### Use with Part(s)

Description	Part Number
Pre-Crimped Lead DuraClik Female-to-DuraClik Female, Tin (Sn) Plating, 150.00mm Length, 26 AWG, Black	<a href="#">797581008</a>
Pre-Crimped Lead DuraClik Female-to-DuraClik Female, Tin (Sn) Plating, 300.00mm Length, 26 AWG, Black	<a href="#">797581009</a>
DuraClik Female Crimp Terminals	<a href="#">560085</a>
Micro-Latch Female Crimp Terminals	<a href="#">50212</a>
DuraClik Female Terminals	<a href="#">56161</a>

---

This document was generated on May 13, 2026