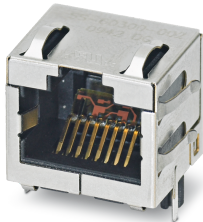


RJ45 PCB connectors - VS-08-BU-RJ45-10G/LH-1 - 1420401

Please be informed that the data shown in this PDF Document is generated from our Online Catalog. Please find the complete data in the user's documentation. Our General Terms of Use for Downloads are valid (<http://phoenixcontact.com/download>)




RJ45 socket insert, for PCB assembly, CAT6A, 8-pos., shielded, with angled solder pins, 1x

Your advantages

- ✓ Compact design
- ✓ 10 Gbps
- ✓ Suitable for industrial applications
- ✓ Additional shield springs for improved EMC properties



Key Commercial Data

Packing unit	1 pc
GTIN	 4 046356 547895
GTIN	4046356547895
Weight per Piece (excluding packing)	1.000 g
Custom tariff number	85366990
Country of origin	Germany

Technical data

Mechanical characteristics

Connection method	Wave soldering contacts
Number of slots	1
Weight	5.1 g
Flammability rating according to UL 94	V0

Ambient conditions

RJ45 PCB connectors - VS-08-BU-RJ45-10G/LH-1 - 1420401

Technical data

Ambient conditions

Ambient temperature (operation)	-40 °C ... 85 °C
Ambient temperature (storage/transport)	-40 °C ... 85 °C

Material data

Contact surface material	Gold
Contact material	Copper alloy
Housing material	Plastic
Housing surface material	Nickel-plated
Mounting type	PCB mounting

Electrical characteristics

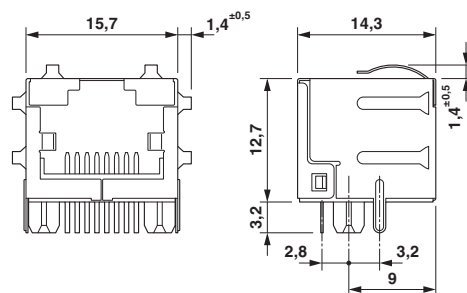
Number of positions	8
Transmission characteristics (category)	CAT6 _A
GRP transmission properties	CAT6 _A
Transmission speed	10 Gbps
Rated voltage (III/3)	72 V (DC)
Insertion/withdrawal cycles	≥ 750

Environmental Product Compliance

China RoHS	Environmentally friendly use period: unlimited = EFUP-e
	No hazardous substances above threshold values

Drawings

Dimensional drawing



RJ45 socket insert

Classifications

eCl@ss

eCl@ss 10.0.1	27440205
---------------	----------

RJ45 PCB connectors - VS-08-BU-RJ45-10G/LH-1 - 1420401

Classifications

eCl@ss

eCl@ss 11.0	27440223
eCl@ss 4.0	27260700
eCl@ss 4.1	27260700
eCl@ss 5.0	27260700
eCl@ss 5.1	27261200
eCl@ss 6.0	27261200
eCl@ss 7.0	27440205
eCl@ss 9.0	27440205

ETIM

ETIM 4.0	EC002638
ETIM 6.0	EC000438

UNSPSC

UNSPSC 6.01	30211923
UNSPSC 7.0901	39121522
UNSPSC 11	39121522
UNSPSC 12.01	39121522
UNSPSC 13.2	39121522
UNSPSC 18.0	39121522
UNSPSC 19.0	39121522
UNSPSC 20.0	39121522
UNSPSC 21.0	39121522

Approvals

Approvals

Approvals

EAC

Ex Approvals

Approval details

RJ45 PCB connectors - VS-08-BU-RJ45-10G/LH-1 - 1420401

Approvals

EAC



B.01687

Accessories

Accessories

Panel mounting frame

Panel mounting frames - CUC-V14-F1ZNI-EM/R4O - 1413963



RJ45 panel mounting frame, IP67, for push-pull interlocking, metal, for PCB connection, for square panel cutout, with grommet and mounting screws