



NXP-Freescale i.MX6

HummingBoard Base



Simple. Robust. Computing Solutions

SolidRun Ltd.

3 Dolev st., 3rd floor, P.O. Box 75

Migdal Tefen 2495900, Israel.

www.solid-run.com

Overview

The Base version of the HummingBoard carrier offers a usable and economical starting point for low-compute needs in an embedded device. The HummingBoard base focuses on file system being made exclusively available through a Micro-SD card slot together with the ability to do basic GPIO, media processing, and network connectivity.

HummingBoard Base Highlighted Features

- ✿ Based on NXP's iMX6 Single to Dual Core
- ✿ Up to 1GB DDR3
- ✿ Small footprint
- ✿ Robust design

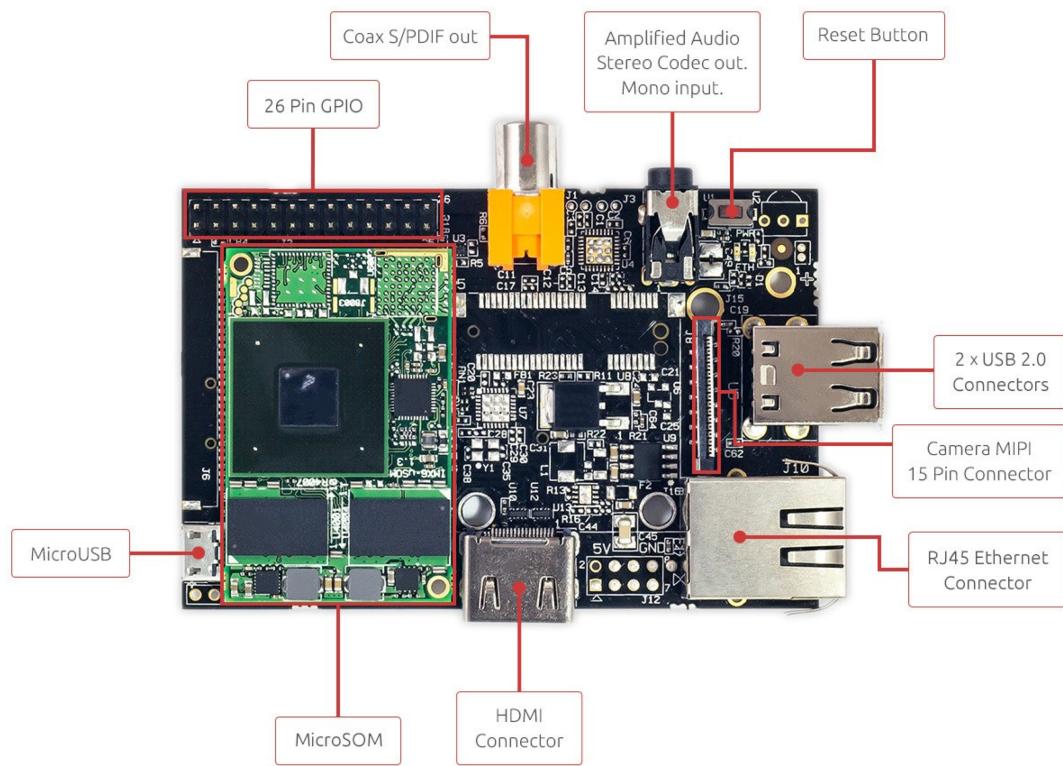
System Specifications

HummingBoard Base	
SOM Model	i.MX6 based Solo to Dual Core SOM
Memory and Storage	Up to 1GB DDR3 uSD
Connectivity	1×RJ-45* 2×Host USB 2.0
Media	HDMI-Out SPDIF MIPI-CSI-2 Camera
I/O	Reset Button, 26 pins GPIO Header
Power	5V, uUSB
Software	Linux
Dimensions (W×L)	85mm×56mm

(*) Note that due to internal i.MX6 buses the 1000Mbps interface speed is limited to 470Mbps.

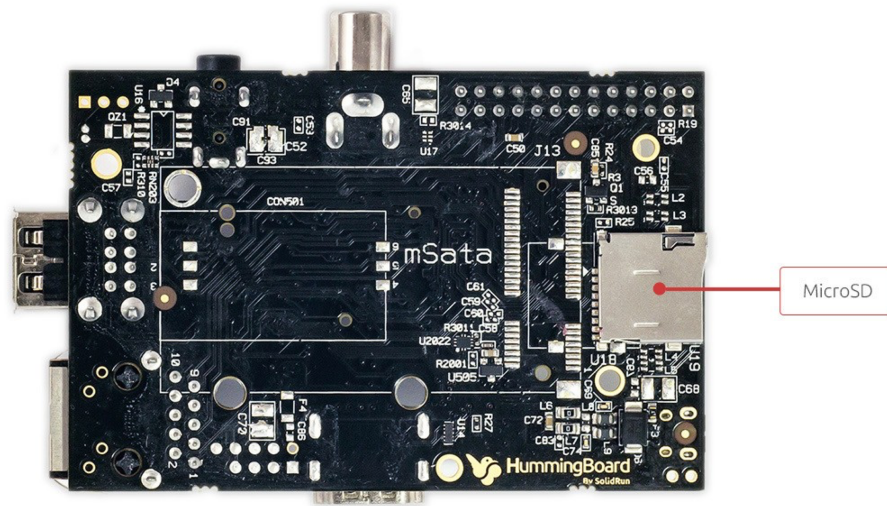
Interfaces

Top View



Interfaces

Bottom View



Available* SKUs for HummingBoard Base

SKU	Description
SRMX6SOWT1D512E008B00CH	SOM iMX6 Solo HummingBoard Base Inc. WiFi/BT 512MB DDR 8GB eMMC Com. Temp R00 Inc. Heatsink
SRMX6SOW00D512E008B00CH	SOM iMX6 Solo HummingBoard Base No WiFi/BT 512MB DDR 8GB eMMC Com. Temp R00 Inc. Heatsink
SRMX6DLWT1D01GE008B00CH	SOM iMX6 Dual-lite HummingBoard Base Inc. WiFi/BT 1GB DDR 8GB eMMC Com. Temp R00 Inc. Heatsink
SRMX6DLW00D01GE008B00CH	SOM iMX6 Dual-lite HummingBoard Base No WiFi/BT 1GB DDR 8GB eMMC Com. Temp R00 Inc. Heatsink
SRMX6DUWT1D01GE008B00CH	SOM iMX6 Dual HummingBoard Base Inc. WiFi/BT 1GB DDR 8GB eMMC Com. Temp R00 Inc. Heatsink
SRMX6DUW00D01GE008B00CH	SOM iMX6 Dual HummingBoard Base No WiFi/BT 1GB DDR 8GB eMMC Com. Temp R00 Inc. Heatsink

(*) Different configurations available for MOQ

Safety Notice

- This device is to be used with Certified Power adaptor with output rated 5VDC, 3A. Power adapter must meet Limited power source (LPS) requirements.
- Power adapter must meet local safety standards and requirements based on product intended use.
- Power adapter must meet Operating environment conditions as specified above.

Disposal

Follow local regulations regarding disposal of the product. Dispose of your product in accordance with local regulations. In some areas, the disposal of these items in household or business trash may be prohibited.

Help us protect the environment- recycle!

IMPORTANT NOTICE – Please Read Carefully

No warranty of accuracy is given concerning the contents of the information contained in this document. To the extent permitted by law no liability (including liability to any person by reason of negligence) will be accepted by SolidRun Ltd. Or its employees for any direct or indirect loss or damage caused by omissions from or inaccuracies in this document.

SolidRun Ltd. Reserves the right to change details in this publication without notice

Product and company names herein may be the trademarks of their respective owners.

Information in this document supersedes and replaces information previously supplied in any prior versions of this document.

Support

For technical support please visit:

Our Wiki – <http://wiki.solid-run.com/>

Our Forums - <http://forum.solid-run.com/>

For direct support please contact us at: support@solid-run.com

Documentation

Additional documentation available at:

<http://wiki.solid-run.com/doku.php?id=products:imx6:documents>