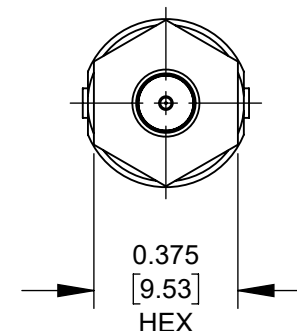
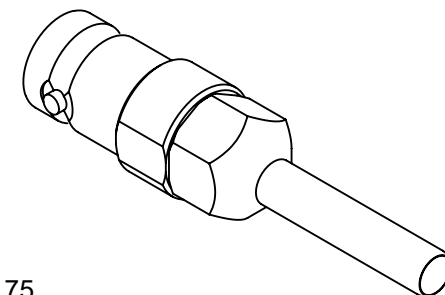


Ø0.175
[4.45]
REF



NOTES:

1. MATERIALS:

BARREL, SHELL - BRASS ALLOY, NICKEL PLATED
MICRO CONTACT - BRASS ALLOY, GOLD PLATED
BNC CONTACT - BERYLLIUM COPPER, GOLD PLATED
INSULATORS - TEFLON

2. CHARACTERISTIC IMPEDANCE: 75 Ohms.

3. MEETS SMPTE ST 2082-1 SPEC; BANDWIDTH: 12 GHz.

4. THIS PRODUCT IS RoHS COMPLIANT.

CUSTOMER DRAWING

					THIS DRAWING DESCRIBES A DESIGN CONSIDERED PROPRIETARY IN NATURE, DEVELOPED AND MANUFACTURED BY SWITCHCRAFT INC. AND IS RELEASED ON A CONFIDENTIAL BASIS FOR IDENTIFICATION PURPOSES ONLY.				
					SIZE	WIDTH	MULT	LBS/M	TEMPER
					FINISH			MATERIAL	
					SPEC No.			SPEC No.	
					FIRST USED ON		SCALE		Switchcraft®
					DATE DRAWN	BY	CHKD	APVD	
					8/4/21	MS	MS	*	
							8/4/21	*	
					NAME			PART No.	
					ADAPTER,			VMMPBNCF	
					BNC TO MICRO WECO, SHORT			REV	
								0A	

SolidWorks CAD File

