



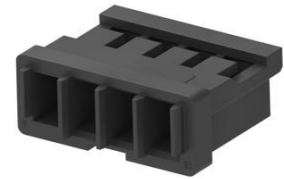
**Part Number :** [874390401](#)

**Product Description :** 1.50mm Pitch, Pico-SPOX Receptacle Crimp Housing, Single Row, Friction Lock, 4 Circuits, Black

**Series Number :** 87439

**Status :** Not Recommended For New Design

**Product Category :** Connector Housings



---

## Documents and Resources

### Drawings

[874390401\\_sd.pdf](#)

### 3D Models and Design Files

[STEP AP242](#)

[SOLIDWORKS](#)

[Creo](#)

[874390401.dxf](#)

### Specifications

[874370000-AS-000.pdf](#)

[2027050000-000.pdf](#)


[PS-78047-001-001.pdf](#)

[PS-87437-001-001.pdf](#)

---

## Product Environment Compliance

### Compliance

GADSL/IMDS	Not Relevant
China RoHS	 per SJ/T 11365-2006
EU ELV	Not saleable
Low-Halogen Status	Low-Halogen per IEC 61249-2-21
REACH SVHC	Not Contained per D(2025)7771-DC (04 Feb 2026)
EU RoHS	Compliant per EU 2015/863

## Compliance Statements

- EU RoHS
- REACH SVHC
- Low-Halogen

## Industry Documents

- IPC 1752A Class C
- IPC 1752A Class D
- Molex Product Compliance Declaration
- IEC-62474
- chemSHERPA (xml)

## Substances of Interest

- PFAS

## EU RoHS Certificate of Compliance

## Additional Product Compliance Information

---

## Part Details

### General

Status	Not Recommended For New Design
Category	Connector Housings
Series	87439
Description	1.50mm Pitch, Pico-SPOX Receptacle Crimp Housing, Single Row, Friction Lock, 4 Circuits, Black
Application	Signal, Wire-to-Board
Product Name	Pico-SPOX
UPC	822350140676

### Agency

CSA	LR19980
UL	E29179

### Physical

Circuits (maximum)	4
Color - Resin	Natural
Flammability	94V-0
Gender	Receptacle

Glow-Wire Capable	No
Lock to Mating Part	Yes
Material - Resin	Nylon
Net Weight	61.780/mg
Number of Rows	1
Packaging Type	Bag
Panel Mount	No
Pitch - Mating Interface	1.50mm
Polarized to Mating Part	Yes
Stackable	No
Temperature Range - Operating	-55° to +105°C

---

## Mates With / Use With

### Mates with Part(s)

Description	Part Number
Pico-SPOX Vertical, Single Row, Surface Mount Headers	<u>87437</u>
Pico-SPOX Right-Angle, Single Row, Surface Mount Headers	<u>87438</u>

### Use with Part(s)

Description	Part Number
Pico-SPOX Female Crimp Terminals	<u>87421</u>

---

This document was generated on Apr 15, 2026