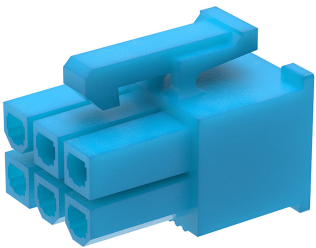




Part Number : [469920640](#)  
Product Description : Mini-Fit Versa Color  
Receptacle Housing, Dual Row, Nylon 6/6, UL  
94V-0, 6 Circuits, Glow-Wire Capable, Blue  
Series Number : [46992](#)  
Status : Active  
Product Category : Connector Housings



## Documents & Resources


Drawings  
[469920640\\_sd.pdf](#)  
[PK-5557-002-000.pdf](#)

3D Models and Design Files  
[469920640\\_stp.zip](#)

Specifications  
[PS-5556-001-001.pdf](#)  
[55560001-TS-000.pdf](#)

## Product Environment Compliance

### Compliance

GADSL/IMDS	Not Relevant
China RoHS	
EU ELV	Not Relevant
Low-Halogen Status	Not Low-Halogen per IEC 61249-2-21
REACH SVHC	Not Contained per D(2024)6225-DC (07 Nov 2024)
EU RoHS	Compliant per EU 2015/863

[Multiple Part Product Compliance Statements](#)  
- Eu RoHS  
- REACH SVHC  
- Low-Halogen

[Multiple Part Industry Compliance Documents](#)  
- IPC 1752A Class C

- IPC 1752A Class D
- Molex Product Compliance Declaration
- IEC-62474
- chemSHERPA (xml)

## EU RoHS Certificate of Compliance

---

### Part Details

#### General

Status	Active
Category	Connector Housings
Series	46992
Description	Mini-Fit Versa Color Receptacle Housing, Dual Row, Nylon 6/6, UL 94V-0, 6 Circuits, Glow-Wire Capable, Blue
Application	Power, Wire-to-Board, Wire-to-Wire
Product Name	Mini-Fit Versa Color
UPC	195842021860

#### Agency

CSA	LR19980
UL	E29179

#### Physical

Circuits (maximum)	6
Color - Resin	Blue
Flammability	94V-0
Gender	Receptacle
Glow-Wire Capable	Yes
Keying to Mating Part	None
Lock to Mating Part	Yes
Material - Resin	Nylon
Net Weight	1.380/g
Number of Rows	2
Packaging Type	Bag
Panel Mount	No

Pitch - Mating Interface	4.20mm
Pitch - Termination Interface	4.20mm
Polarized to Mating Part	Yes
Temperature Range - Operating	-40° to +105°C

---

## Mates With / Use With

### Mates with Part(s)

Description	Part Number
Mini-Fit Jr. Dual Row Plug Housings	<u>46993</u>
Mini-Fit Vertical Dual Row Headers	<u>172447</u>

### Use with Part(s)

Description	Part Number
Mini-Fit Female Crimp Terminals	<u>5556</u>

---

This document was generated on Mar 14, 2025