



Copyright FCI.



FCIconnect.com



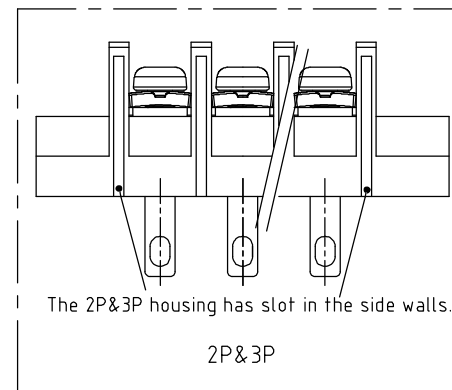
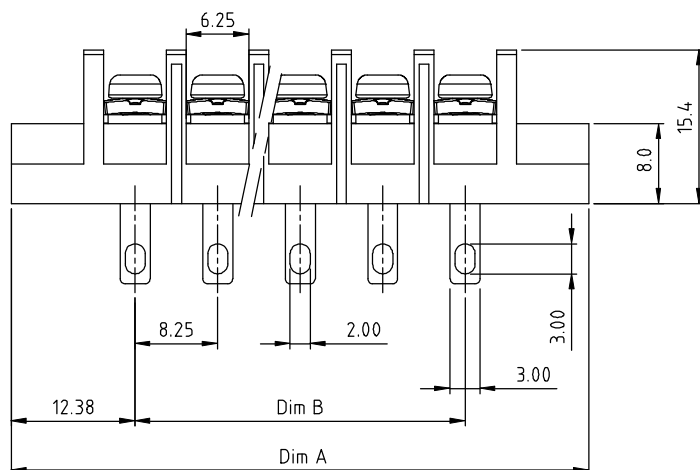
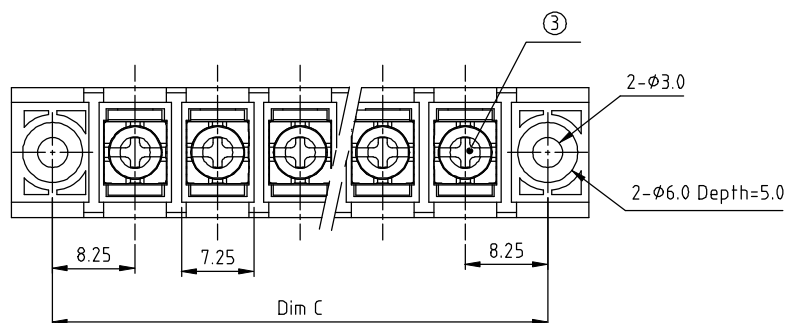
1

2

3

4

PRODUCT NUMBER	PITCH
YK403xx3x0J0G	8.25 mm



The 2P&amp;3P housing has slot in the side walls.

2P&amp;3P

MATERIALS ELECTRICAL  
RATED VOLTAGE & CURRENT: 300 V, 20 A  
WITHSTAND VOLTAGE: AC 2000 V/Min  
INSULATION RESISTANCE: 1000 MΩ OR MORE AT DC 500 V  
OPERATING TEMPERATURE RANG: -40 °C ~ +115 °C  
SCREW TORQUE VALUE: 7 Lb-In.  
WIRE RANGE: 22 - 12 AWG  
1) HOUSING: Thermoplastic, UL 94 V-0 BLACK  
2) TERMINAL: BRASS, 0.8t  
3) TERMINAL SCREWS: STEEL, M3  
APPROVAL: cULus

## DIMENSION

Dim A	(N+2)×8.25
Dim B	(N-1)×8.25
Dim C	(N+1)×8.25

N=Number of poles

Poles	Tolerance
2p-4p	±0.30
5p-8p	±0.40
9p-16p	±0.50
17p-23p	±0.60
24p-30p	±0.80

PART NO.: YK 403xx 3 x 0 J0G

Plated

No. of poles  
02 2 poles  
03 3 poles  
... ..  
30 30 poles

Code	Terminal	Screw
0	G/F	G/F
1	G/F	Zinc
2	Tin	G/F
3	Tin	Zinc

RoHS compliant  
(lead<4%)  
In copper Alloy

mat'l. code				surface ASME Y14.5	tolerance ASME Y14.5	projection MM	product family TERMINAL BLOCK		
ltr	ecn no	dr	date	tolerances unless otherwise specified		MM	title TERMINAL BLOCK		
				angles	X.±0.5		BARRIER TYPE, WITH FLANGE		
				X'±1"	X.XX±0.1	scale	dwg no YK403xx3x0J0G		
				dr	EVAN LU	061014	sheet 1 of 1 size A4		
				enr	EVAN LU	061014	type CUSTOMER Drawing		
				chr	HANKE FENG	061014			
				appd	SHI JUN	061014			
sheet index	revision sheet	A	1						

form: A4mmXLc

1

2

3

4

PDS: Rev :A

STATUS:Released

Printed: Jul 22, 2014