



**Part Number :** [26604050](#)

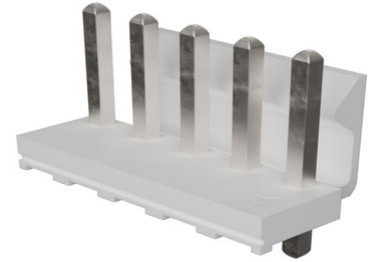
**Product Description :** KK 396 Header, Vertical, Friction Lock, 5 Circuits, Tin (Sn) Plating

**Series Number :** 41791

**Status :** Active

**Product Category :** PCB Headers and Receptacles

**Engineering Part Number :** 41791-0005



---

## Documents and Resources

### Drawings

[026604050\\_sd.pdf](#)

[PK-41791-001-001.pdf](#)

### 3D Models and Design Files

[STEP AP242](#)

[SOLIDWORKS](#)

[Creo](#)

[Symbol and Footprint \(Multi-Format\)](#)


### Specifications

[PS-08-50-001.pdf](#)

---

## Product Environment Compliance

### Compliance

|                    |   |
|--------------------|---|
| GADSL/IMDS         | Compliant with Exemption 44; 33   |
| China RoHS         |  per SJ/T 11365-2006 |
| EU ELV             | Not Relevant  |
| Low-Halogen Status | Not Low-Halogen per IEC 61249-2-21  |
| REACH SVHC         | Not Contained per D(2025)7771-DC (04 Feb 2026)  |
| EU RoHS            | Compliant per EU 2015/863   |

[Compliance Statements](#)

- EU RoHS
- REACH SVHC
- Low-Halogen

#### Industry Documents

- IPC 1752A Class C
- IPC 1752A Class D
- Molex Product Compliance Declaration
- IEC-62474
- chemSHERPA (xml)

#### Substances of Interest

- PFAS

#### EU RoHS Certificate of Compliance

#### Additional Product Compliance Information

## Part Details

### General

|                |  |
|----------------|--|
| Status         | Active   |
| Category       | PCB Headers and Receptacles  |
| Series         | 41791  |
| Description    | KK 396 Header, Vertical, Friction Lock, 5 Circuits, Tin (Sn) Plating |
| Application    | Wire-to-Board  |
| Component Type | PCB Header   |
| Product Name   | KK 396   |
| UPC            | 800753585942   |

### Agency

|     |         |
|-----|---------|
| CSA | LR19980 |
| UL  | E29179  |

### Electrical

|                               |                  |
|-------------------------------|------------------|
| Current - Maximum per Contact | 7.0A             |
| Voltage - Maximum             | 600V AC (RMS)/DC |

### Physical

|                   |    |
|-------------------|----|
| Breakaway         | No |
| Circuits (Loaded) | 5  |

|                                |                           |
|--------------------------------|---------------------------|
| Circuits (maximum)             | 5                         |
| Color - Resin                  | Natural                   |
| Durability (mating cycles max) | 25                        |
| First Mate / Last Break        | No                        |
| Flammability                   | 94V-0                     |
| Glow-Wire Capable              | No                        |
| Lock to Mating Part            | Yes                       |
| Material - Metal               | Brass                     |
| Material - Plating Mating      | Tin                       |
| Material - Plating Termination | Tin                       |
| Material - Resin               | Polyester                 |
| Net Weight                     | 1.870/g                   |
| Number of Rows                 | 1                         |
| Orientation                    | Vertical                  |
| Packaging Type                 | Bag                       |
| PCB Locator                    | No                        |
| PCB Retention                  | No                        |
| PCB Thickness - Recommended    | 1.60mm                    |
| PC Tail Length                 | 3.56mm                    |
| Pitch - Mating Interface       | 3.96mm                    |
| Plating min - Mating           | 5.080µm                   |
| Plating min - Termination      | 5.080µm                   |
| Polarized to Mating Part       | Yes                       |
| Polarized to PCB               | No                        |
| Shrouded                       | Partially Shrouded        |
| Stackable                      | Yes                       |
| Temperature Range - Operating  | See Product Specification |
| Termination Interface Style    | Through Hole              |

### Solder Process Data

|                              |      |
|------------------------------|------|
| Max-Duration                 | 5    |
| Lead-Free Process Capability | WAVE |
| Max-Cycle                    | 1    |
| Max-Temp                     | 235  |

## Mates With / Use With

### Mates with Part(s)

| Description                               | Part Number  |
|---|--------------|
| KK 3.96mm Single Row Crimp Housings       | <u>2139</u>  |
| KK 3.96mm Single Row Crimp Housings       | <u>3069</u>  |
| KK 3.96mm Crimp Housings                  | <u>41695</u> |
| KK 396 PC Board Connector                 | <u>41815</u> |
| KK 3.96mm Pitch Single Row Crimp Housings | <u>6442</u>  |

---

This document was generated on May 22, 2026