



Part Number : [2213920003](#)

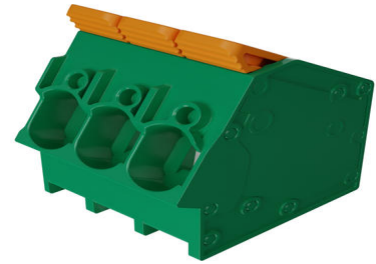
Product Description : 7.50mm Pitch Lever Activated Fixed Mount PCB Terminal Block, 35° Wire Entry, Left Rear Terminal, 3 Circuits

Series Number : 221392

Status : Active

Product Category : Terminal Blocks and Barrier Strip

Engineering Part Number : MX-TLM-405AA-03



Documents and Resources

Drawings

[2213920003_sd.pdf](#)

3D Models and Design Files

[STEP AP242](#)

[SOLIDWORKS](#)

[Creo](#)


[Symbol and Footprint \(Multi-Format\)](#)

Specifications

[1302270418-000.pdf](#)

Product Environment Compliance

Compliance

GADSL/IMDS	Not Relevant
China RoHS	 per SJ/T 11365-2006
EU ELV	Not Relevant
Low-Halogen Status	Low-Halogen per IEC 61249-2-21
REACH SVHC	Not Contained per D(2025)7771-DC (04 Feb 2026)
EU RoHS	Compliant per EU 2015/863

[Compliance Statements](#)

- EU RoHS
- REACH SVHC
- Low-Halogen

Industry Documents

- IPC 1752A Class C
- IPC 1752A Class D
- Molex Product Compliance Declaration
- IEC-62474
- chemSHERPA (xml)

Substances of Interest

- PFAS

EU RoHS Certificate of Compliance

Additional Product Compliance Information

Part Details

General

Status	Active
Category	Terminal Blocks and Barrier Strip
Series	221392
Description	7.50mm Pitch Lever Activated Fixed Mount PCB Terminal Block, 35° Wire Entry, Left Rear Terminal, 3 Circuits
Application	Wire-to-Board
Component Type	One Piece
Product Name	Lever Activated Fixed Mount
Type	PCB Terminal Blocks and Connectors
UPC	196823120770

Electrical

Current - Maximum per Contact	38.0A
Voltage - Maximum	600V

Physical

Circuits (Loaded)	3
Circuits (maximum)	3

Color - Resin	Green
Entry Angle	35° Angle
Lock to Mating Part	No
Material - Metal	Copper Alloy
Material - Plating Mating	Tin
Material - Plating Termination	Tin
Material - Resin	Polyamide (PA)
Net Weight	5.200/kg
Number of Rows	1
Orientation	Vertical
Panel Mount	No
PCB Thickness - Recommended	2.00mm
PC Tail Length	3.60mm
Pitch - Mating Interface	7.50mm
Pitch - Termination Interface	7.50mm
Polarized to Mating Part	N/A
Stackable	No
Temperature Range - Operating	-40° to +115°C
Termination Interface Style	Through Hole
Wire Size (AWG)	8, 10, 12, 14, 16, 18, 20, 22, 24
Wire Size mm ²	0.38-3.73

This document was generated on Apr 29, 2026