

MICRO SWITCH

FREEPORT, ILLINOIS U.S.A.
A DIVISION OF HONEYWELL

FED. MFG. CODE 91929

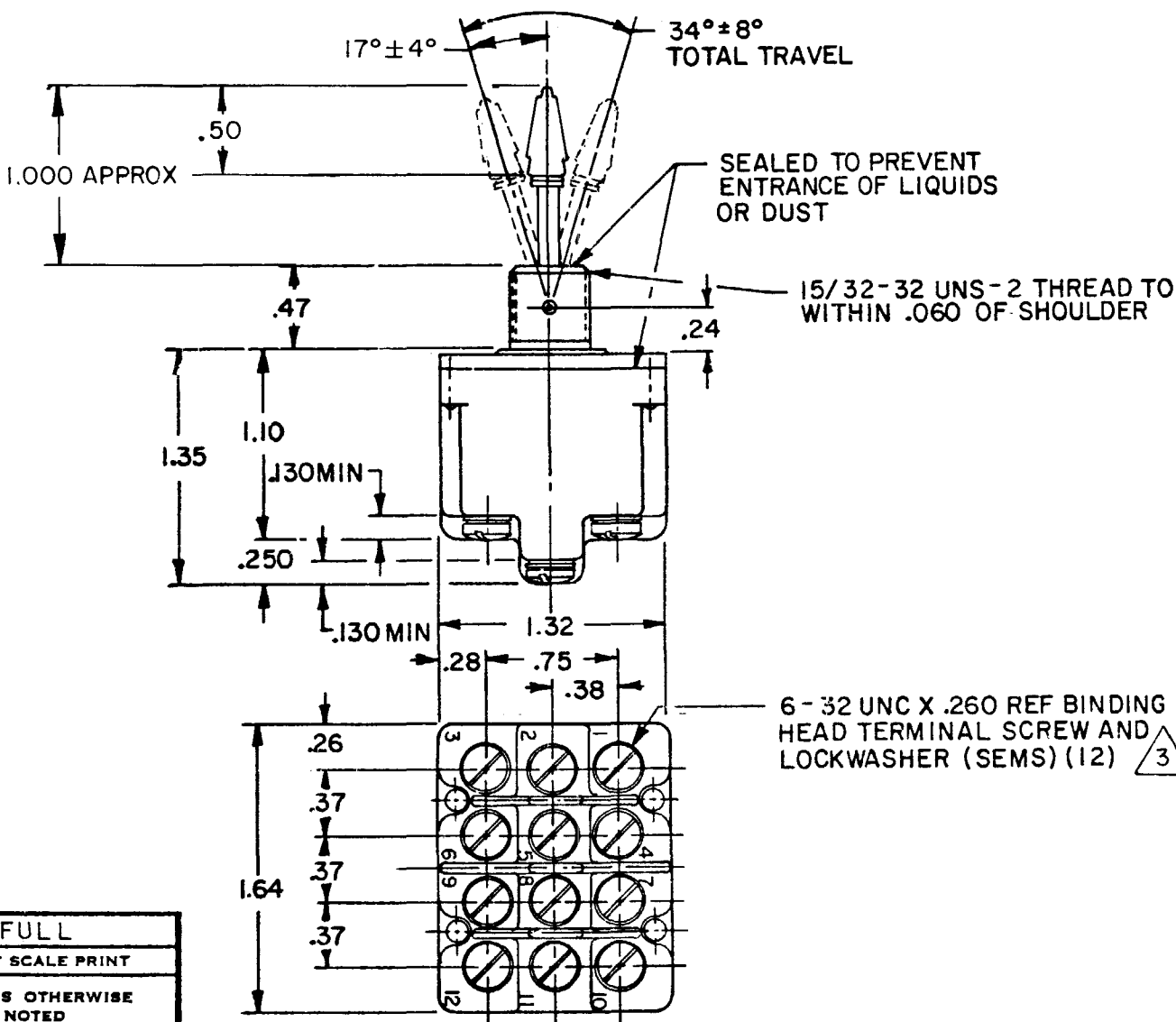
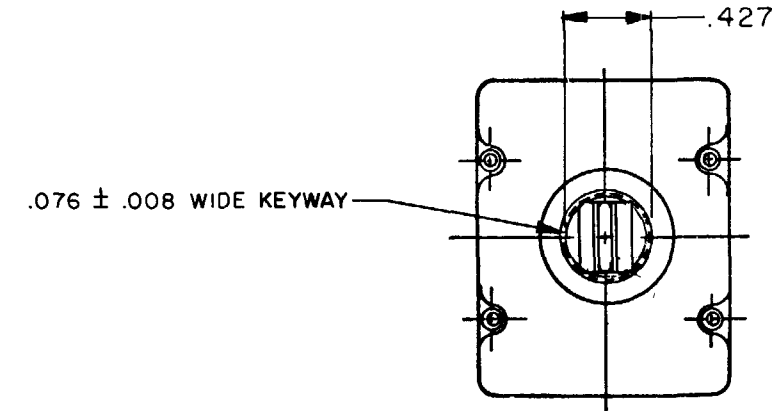
SWITCH-TOGGLE

CATALOG LISTING
4TL82-72

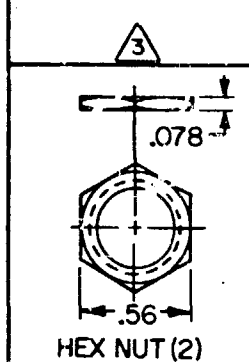
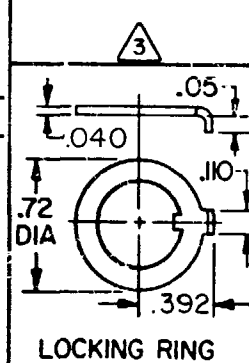
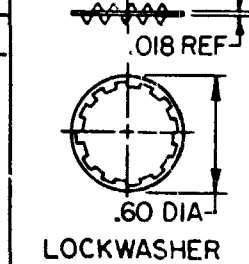
MILITARY RATING (AMPS)

RESISTIVE LOAD		LAMP LOAD		INDUCTIVE LOAD	
DC VOLTS	AC VOLTS	28 VDC	125 VAC	28 VDC	125 VAC
28	125	250	125	250	125
18	.75	.5	11	6	4

THIS DRAWING COVERS A PROPRIETARY ITEM AND IS THE PROPERTY OF MICRO SWITCH, A DIVISION OF HONEYWELL. THIS DRAWING IS NOT TO BE COPIED OR USED WITHOUT THE APPROVAL OF MICRO SWITCH.



CIRCUIT MADE WITH TOGGLE LEVER IN		
KEYWAY SIDE	CENTER	OPPOSITE KEYWAY
MOMENTARY POSITION	MAINTAINED POSITION	MOMENTARY POSITION



NOTES

- 1 - FOR TERMINAL COVER SEE MICRO SWITCH CAT. LIST 5PA9
- 2 - SWITCH IS CAPABLE OF WITHSTANDING A TEMPERATURE OF 160°F CONTINUOUSLY AT FULL RATED LOAD
- 3 - FURNISHED UNASSEMBLED
- 4 - CIRCUIT DESIGNATION AND MICRO SWITCH CATALOG LISTING MARKED ON SIDE OF SWITCH
- 5 - KNOB PORTION OF TOGGLE LEVER HAS NATURAL ALUMINUM FINISH (CLEAR ANODIZED)

SCALE FULL

DO NOT SCALE PRINT

UNLESS OTHERWISE NOTED

DIMENSIONS ARE IN INCHES

TOLERANCES ARE:

ONE PLACE	(.0)	±.030
TWO PLACE	(.00)	±.015
THREE PLACE	(.000)	±.005
ANGLES		±.005

WEIGHT .17 LB EST

10A-125, 250, 277VAC
1/4-125VAC; 1/2HP-250, 277VAC
3A-125VAC "L" L192



CATALOG LISTING
4TL82-72
PAGE 1 OF 1

ISSUE
M
9

REVISIONS
A CO-81150
J A K
19 JUN 95
B CO-94445
C S L
23 NOV 99

CHECK
13 MAY 80
21W

FORMTEK
DRAWN
J A P 10 MAY 80
CHECK 21W

REPLACES

RELEASE NO. PR-8787

CHECK

CHECK

CHECK

CHECK

CHECK