

Flush-type connector - SACC-CIP-M12MS-4P SMD R32



1411996

<https://www.phoenixcontact.com/us/products/1411996>

Please be informed that the data shown in this PDF document is generated from our Online Catalog. Please find the complete data in the user documentation. Our General Terms of Use for Downloads are valid.



Flush-type connector, 4-position, Plug, straight, M12, A - standard, PCB mounting, SMD

Your advantages

- Reduced mounting costs thanks to two-piece device connector
- Packaging available for automated pick and place assembly
- All common pin assignments and codings available
- Easy device integration thanks to mechanical port screw connections with threaded attachment, press-in contour or direct integration in the front plate
- Optional shield connection and seal for the device when not plugged in

Flush-type connector - SACC-CIP-M12MS-4P SMD R32



1411996

<https://www.phoenixcontact.com/us/products/1411996>

Commercial Data

Item number	1411996
Packing unit	1 pc
Minimum order quantity	100 pc
Sales Key	A11
Product Key	ABQCBJ
GTIN	4046356992275
Weight per Piece (including packing)	5.98 g
Weight per Piece (excluding packing)	5.98 g
Customs tariff number	85366990
Country of origin	DE

Flush-type connector - SACC-CIP-M12MS-4P SMD R32



1411996

<https://www.phoenixcontact.com/us/products/1411996>

Technical Data

Notes

Notes on operation	The electrical and mechanical data specified assume that the connector pair is correctly locked and mounted. If the connector is unlocked and if there is a danger of contamination, the connector must be sealed using a protective cap > IP54. Influences arising from litz wires, cables or PCB assembly must also be taken into consideration.
--------------------	--

Product properties

Product type	Contact insert
Number of positions	4
Coding	A - standard

Insulation characteristics

Overvoltage category	II
Degree of pollution	3

Electrical properties

Rated surge voltage	2.5 kV
Contact resistance	$\leq 3 \text{ m}\Omega$
Insulation resistance	$\geq 100 \text{ M}\Omega$
Nominal voltage U_N	250 V
Nominal current I_N	4 A

Material specifications

Flammability rating according to UL 94	V0
Sealing material	FKM
Contact material	CuZn
Contact surface material	Au
Contact carrier material	PA

Connector

Insertion/withdrawal cycles	> 100
-----------------------------	-------

Header 1

Head design	Plug
Head cable outlet	straight
Head thread type	M12
Coding	A - standard

Environmental and real-life conditions

Ambient conditions

Degree of protection (when plugged in)	IP67 (correctly plugged in and locked)
Degree of protection	IP67

Flush-type connector - SACC-CIP-M12MS-4P SMD R32



1411996

<https://www.phoenixcontact.com/us/products/1411996>

Ambient temperature (operation)	-40 °C ... 105 °C (Plug / socket)
	-55 °C ... 105 °C (without mechanical actuation)

Standards and regulations

M12

Standards/specifications	IEC 61076-2-101
--------------------------	-----------------

Mounting

Mounting type	PCB mounting
---------------	--------------

Packaging specifications

Type of packaging	Belt
Delivery state	with assembly pad

Flush-type connector - SACC-CIP-M12MS-4P SMD R32

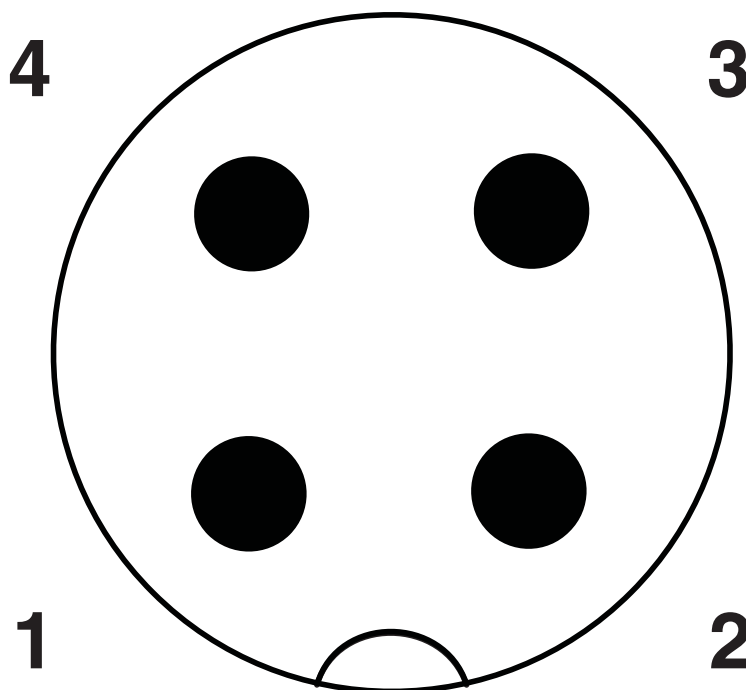


1411996

<https://www.phoenixcontact.com/us/products/1411996>

Drawings

Schematic diagram



Pin assignment M12 plug, 4-pos., A-coded, view plug side

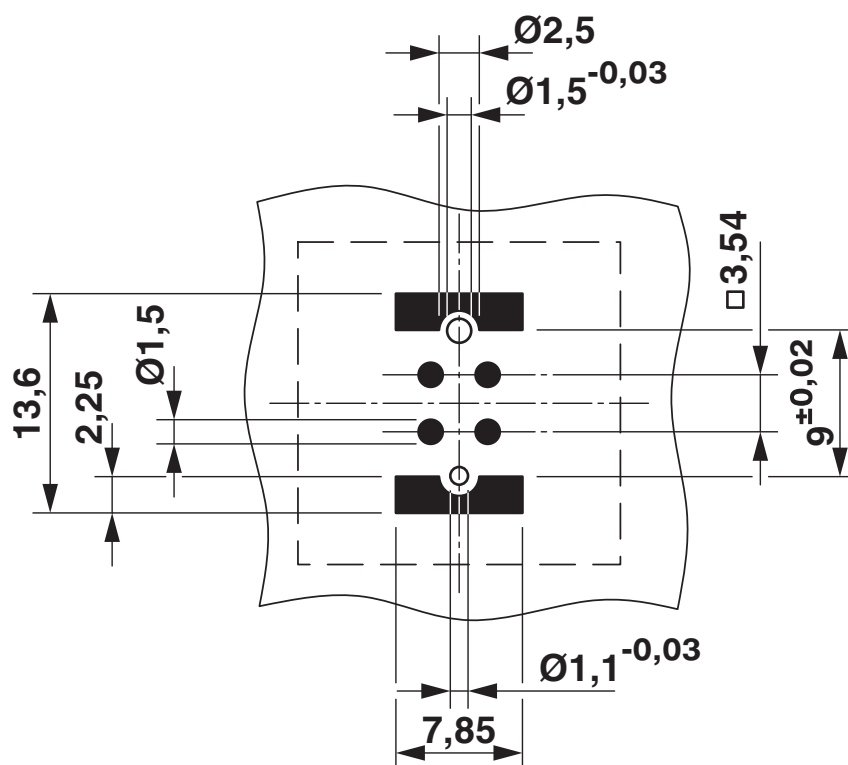
Flush-type connector - SACC-CIP-M12MS-4P SMD R32



1411996

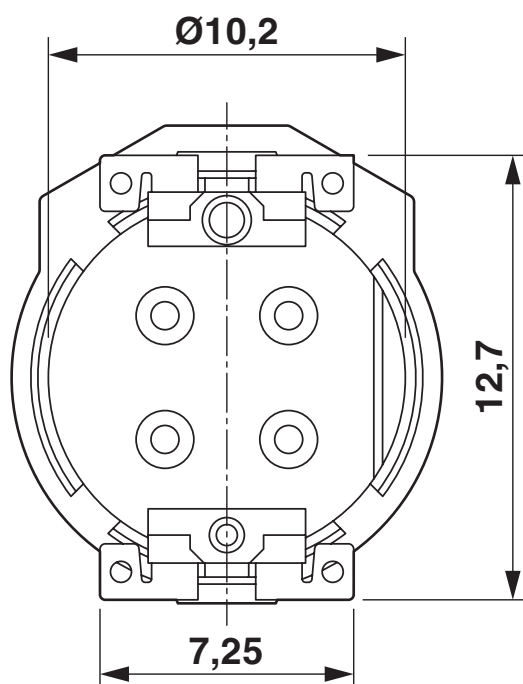
<https://www.phoenixcontact.com/us/products/1411996>

Drilling plan/solder pad geometry



Soldering pad geometry

Dimensional drawing



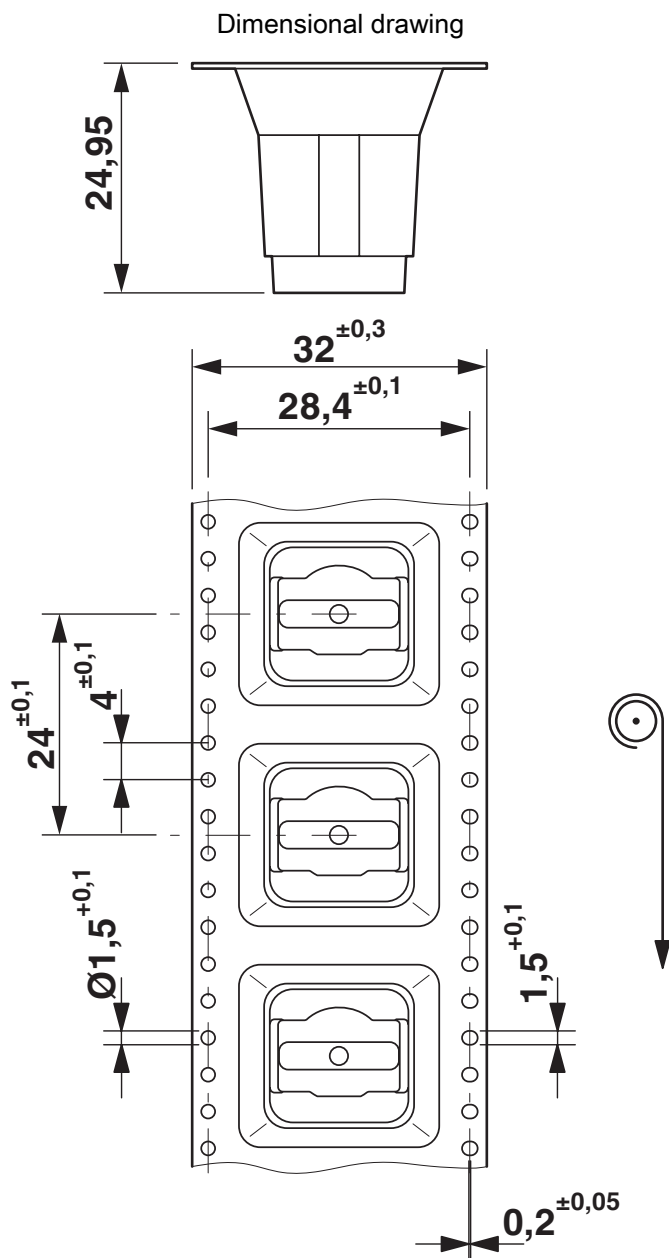
View of solder side

Flush-type connector - SACC-CIP-M12MS-4P SMD R32



1411996

<https://www.phoenixcontact.com/us/products/1411996>



SMD tape-on-reel packing

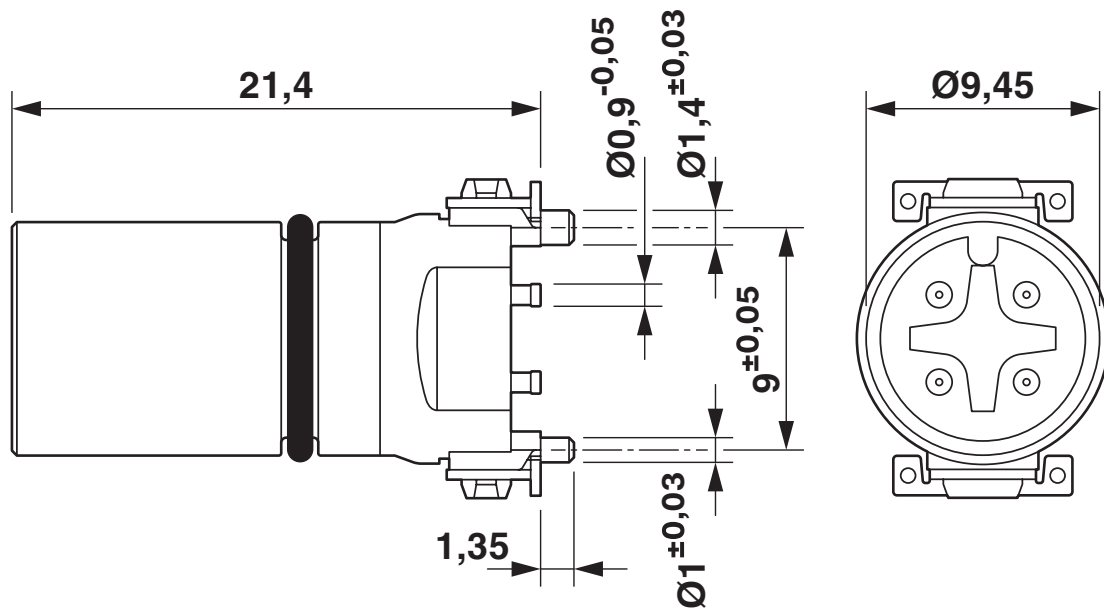
Flush-type connector - SACC-CIP-M12MS-4P SMD R32



1411996

<https://www.phoenixcontact.com/us/products/1411996>

Dimensional drawing




M12 male connector contact carrier

Flush-type connector - SACC-CIP-M12MS-4P SMD R32




1411996
<https://www.phoenixcontact.com/us/products/1411996>

Approvals



EAC
Approval ID: B.01687

	cULus Recognized Approval ID: E221474-20160506			
	Nominal Voltage U_N	Nominal Current I_N	Cross Section AWG	Cross Section mm^2
	250 V	4 A	-	-

Flush-type connector - SACC-CIP-M12MS-4P SMD R32



1411996

<https://www.phoenixcontact.com/us/products/1411996>

Classifications

ECLASS

ECLASS-9.0	27440103
ECLASS-10.0.1	27440110
ECLASS-11.0	27440102

ETIM

ETIM 8.0	EC002635
----------	----------

UNSPSC

UNSPSC 21.0	39121400
-------------	----------

Flush-type connector - SACC-CIP-M12MS-4P SMD R32



1411996
<https://www.phoenixcontact.com/us/products/1411996>

Environmental Product Compliance

REACH SVHC	Lead 7439-92-1
China RoHS	Environmentally Friendly Use Period = 50 years
	For information on hazardous substances, refer to the manufacturer's declaration available under "Downloads"

Flush-type connector - SACC-CIP-M12MS-4P SMD R32



1411996

<https://www.phoenixcontact.com/us/products/1411996>

Accessories

Sample set

Sample set - SACC-CIP-M12MS-4P SMD-SP - 1418643

<https://www.phoenixcontact.com/us/products/1418643>



Sample set, 4-position, Plug, straight, M12, A - standard, PCB mounting, SMD

Housing screw connection

Housing screw connection - SACC-BP-M-M12/M15-6-SMD - 1414000

<https://www.phoenixcontact.com/us/products/1414000>



Housing screw connection, Plug, M12, Rear mounting, M15 x 1

Flush-type connector - SACC-CIP-M12MS-4P SMD R32



1411996

<https://www.phoenixcontact.com/us/products/1411996>

Housing screw connection

Housing screw connection - SACC-BP-M-M12/M15-6-SMD SCO - 1414002

<https://www.phoenixcontact.com/us/products/1414002>



Housing screw connection, Plug, M12-SPEEDCON, Rear mounting, M15 x 1

Housing screw connection

Housing screw connection - SACC-FP-M-M12/M14 SMD - 1412078

<https://www.phoenixcontact.com/us/products/1412078>



M12 pin, front mounting SMD with M14 screw fastening

Flush-type connector - SACC-CIP-M12MS-4P SMD R32



1411996

<https://www.phoenixcontact.com/us/products/1411996>

Housing screw connection

Housing screw connection - SACC-FP-M-M12/PRESS SMD - 1412080

<https://www.phoenixcontact.com/us/products/1412080>



Housing screw connection, pin, for the two-part M12 SMD connector, for press-in mounting.

Housing screw connection

Housing screw connection - SACC-BP-M-M12-SMD PP - 1107993

<https://www.phoenixcontact.com/us/products/1107993>



Housing screw connection, Plug, M12-Push-Pull, Rear mounting, M15 x 1, SMD

Flush-type connector - SACC-CIP-M12MS-4P SMD R32



1411996

<https://www.phoenixcontact.com/us/products/1411996>

Housing screw connection

Housing screw connection - SACC-FP-M-M12-SMD PP - 1107999

<https://www.phoenixcontact.com/us/products/1107999>



Housing screw connection, Plug, M12-Push-Pull, Front mounting, M14 x 1, SMD

Phoenix Contact 2022 © - all rights reserved

<https://www.phoenixcontact.com>

Phoenix Contact USA
586 Fulling Mill Road
Middletown, PA 17057, United States
(+717) 944-1300
info@phoenixcon.com