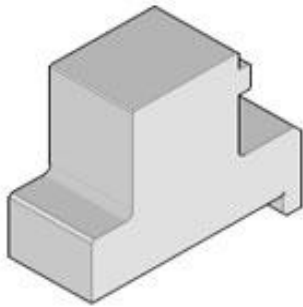


Part Number : [622018669](#)
Product Description : Press-In Tool for Power
Module Assembly, 6-Pair Assemblies
Series Number : 207123
Status : Obsolete
Product Category : Application Tooling Accessories



Documents & Resources

Tooling Specifications

[ATS-622018669-001.pdf](#)
[TM-622018799-001.pdf](#)

Product Environment Compliance

Compliance

GADSL/IMDS	Product not active
China RoHS	Product not active
EU ELV	Product not active
Low-Halogen Status	Product not active
REACH SVHC	Product not active
EU RoHS	Product not active

Compliance Statements

- EU RoHS
- REACH SVHC
- Low-Halogen

Industry Documents

- IPC 1752A Class C
- IPC 1752A Class D
- Molex Product Compliance Declaration
- IEC-62474
- chemSHERPA (xml)

Substances of Interest

- PFAS

EU RoHS Certificate of Compliance

Part Details

General

Status	Obsolete
Category	Application Tooling Accessories
Series	207123
Description	Press-In Tool for Power Module Assembly, 6-Pair Assemblies
Function	Insertion
Geographic Area	Global
Level of Automation	Manual
More Detailed Tech Information	toolingsupport@molex.com
Product Name	Impact
Tool Type	Press-Fit Insertion Tool
UPC	884982107885
Warranty Disclaimer	<p>CAUTION: Molex tooling crimp specifications are valid only when used with Molex terminals and tooling manufactured by Molex and sold by Molex or authorized distributors ("Molex Tooling"). When using tooling other than Molex Tooling with Molex specific connector systems listed in our ATS documents, the Molex tooling qualification does not apply and the responsibility for full qualification of the connector system is that of the customer. Molex accepts no liability for connector performance or tooling support where tooling other than Molex Tooling is used or where Molex Tooling is modified.</p>

Applicable Parts

Description	Part Number

Impact 6 Pair, Right-Angle Power Header, Press-Fit, Blade A1 & A2; B1 & B2 and C1 & C2 Length 6.90mm, LCP, Glass Filled, UL94-V0, Black, Tray Packaging, Lead-Free	<u>782171011</u>
Impact 6 Pair, Right-Angle Power Header, Press-Fit, Blade A1 & A2 6.90mm; B1 & B2 and C1 & C2 Length 5.70mm, LCP, Glass Filled, UL94-V0, Black, Tray Packaging, Lead-Free	<u>782171022</u>
Impact 6 Pair, Right-Angle Power Header, Press-Fit, Blade A1 & A2 and B1 & B2 6.90mm; and C1 & C2 Length 5.70mm, LCP, Glass Filled, UL94-V0, Black, Tray Packaging, Lead-Free	<u>782171077</u>
Impact 6 Pair Right-Angle Power Header, Left Hold-Down, Module 1: Blade A1 & A2; B1 & B2 and C1 & C2 Length 6.90mm; Press-Fit, LCP, Glass Filled UL94-V0, Black, Tray Packaging, Lead-Free	<u>783531001</u>
Impact 6 Pair Right-Angle Power Header, Left Hold-Down, Module 1: Blade A1 & A2 Length 5.70mm; B1 & B2 and C1 & C2 Length 6.90mm; Press-Fit, LCP, Glass Filled UL94-V0, Black, Tray Packaging, Lead-Free	<u>783531007</u>
Impact 6 Pair, Right-Angle Power Header, Left Hold-Down, Module 1: Blade A1 & A2; B1 & B2 and C1 & C2 Length 6.90mm; Module 2: Blade A1 & A2; B1 & B2 and C1 & C2 Length 6.90mm; Press-Fit, LCP, Glass Filled UL94-V0, Black	<u>783531011</u>
Impact 6 Pair, Right-Angle Power Header, Right Hold-Down, Module 1: Blade A1 & A2; B1 & B2 and C1 & C2 Length 6.90mm; Press-Fit, LCP, Glass Filled UL94-V0, Black, Tray Packaging, Lead-Free	<u>783532001</u>
Impact 6 Pair, Right-Angle Power	<u>783532002</u>

Header, Right Hold-Down, Module 1: Blade A1 & A2, B1 & B2, C1 & C2 Length 5.70mm; Press-Fit, LCP, Glass Filled UL94-V0, Black, Tray Packaging, Lead-Free	
Impact 6 Pair, Right-Angle Power Header, Right Hold-Down, Module 1: Blade A1 & A2; B1 & B2 and C1 & C2 Length 6.90mm; Module 2: Blade A1 & A2; B1 & B2 and C1 & C2 Length 6.90mm; Press-Fit, LCP, Glass Filled UL94-V0, Black	<u>783532011</u>
Impact 6 Pair, Right-Angle Power Header, Integrated Guide Module w/ESD clip, Module 1: Blade A1 & A2; B1 & B2 and C1 & C2 Length 6.90mm; Press-Fit, LCP, Glass Filled UL94-V0, Black, key orientation C	<u>784552301</u>

This document was generated on Sep 10, 2025