



## Raspberry Pi HDMI LCD (7 inch)

SKU 114990835     

OUT OF STOCK  
This item is not available at the moment  
[Get notified when it's back in stock](#)

### Description

#### What is Raspberry Pi 7inch HDMI LCD

Raspberry Pi HDMI LCD (7 inch) is a low-cost 7 inch Capacitive Touch Screen LCD, HDMI interface, supports various systems, designed for Raspberry Pi

#### Key Features

- 800×480 high resolution
- Capacitive touch control
- Supports Raspberry Pi
- Supports Banana Pi / Banana Pro, comes with Ubuntu, Raspbian images
- Supports BB Black, comes with Angstrom image

For other mini-PCs, driver is required and should be developed by users

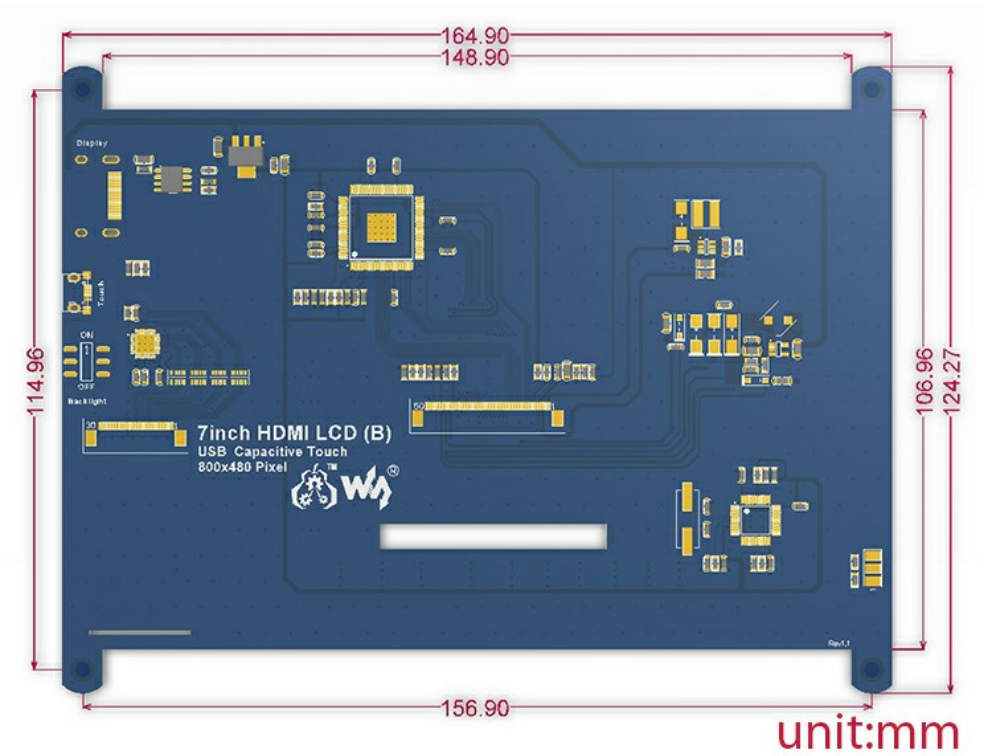
Not only for mini-PCs, it can work as a computer monitor just like any other general HDMI screen

HDMI interface for displaying, USB interface for touch control

Back light control to lower power consumption

If you want to purchase [Raspberry Pi HDMI LCD \(10.1 inch\)](#) or [Raspberry Pi HDMI LCD \(5 inch\)](#), Please click the link.

## Dimensions



Please visit our [wiki](#) page for more info about this product.

## Part List

1. 7inch HDMI LCD x 1
2. HDMI connector x 1
3. RPi screws pack (4pcs) x 1
4. DVD x 1
5. Micro USB Cable x 1

## Technical Details

Dimensions 210mm x 145mm x 50mm

Weight G.W 430g

Battery Exclude

ECCN/HTS

ECCN Not Available

HSCODE 8473309000

## Questions and Answers

Have a question about this? Ask people who

0 Is this color or monochrome LCD?

jankpes on Nov 28,2016

Reply upvote (0)

Hi~As you can see in our Sample image, it is color LCD

Downloaded from [Arrow.com](#)

Seeed Techsupport Team on Sep 28,2017 11:40 AM Reply upvote (0)

can i buy in large quantities? such as 6000 pcs...and what price perpiece?

khewinwong on Nov 21,2017

Reply upvote (0)

Hi there, please contact our email # order@seeed.cc #.There will be sales staff to communicate with you.Regards

Seeed Techsupport Team on Nov 21,2017 09:48 AM

Reply upvote (0)

Any idea when it will be back in stock or it was discontinued?

luis on Sep 28,2017

Reply upvote (0)

Hi, it will be back in stock.

Dana Kemp on Nov 17,2017 14:24 PM

Reply upvote (0)

is the touch driver is compatible with debian and windows?

rodrigo.castillo on Mar 21,2018

Reply upvote (0)

## Raspberry Pi HDMI LCD (7 inch)

SKU 114990835



OUT OF STOCK

This item is not available at the moment

[Get notified when it's back in stock](#)

Description

Technical Details

Questions and Answers

<>  
x



✕  
Notify me when it's back in stock

Please enter a valid email }

SUBMIT

^

## POPULAR SEARCHES

PCB Manufacturing PCB Assembly PCB Layout 3D Printing PCB Stencil Lora ReSpeaker Grove Lidar GPS Can-Bus Arduino Arduino Shield Beaglebone  
Raspberry Pi FPGA LinkIt ONE Crazyflie 2.0 Raspberry Pi 3 Model B RF Explorer DSO Nano v3 HiKey rplidar raspberry pi relay RPLIDAR A2

### Company

About Seeed  
Distributors  
Careers  
Contacts

### Help Center

How to Get Help  
FAQ  
Technical Support  
Shipping & Order  
Warranty & Returns  
Payment Information

### Community

Project Hub  
Forum  
Blog  
Wiki

### Stay Tuned

Subscribe to our newsletter.

email address >



© 2008-2018 Seeed Technology Co.,Ltd. All rights reserved. Site Map

Privacy Policy



Select Language

🔊 Contact Support