



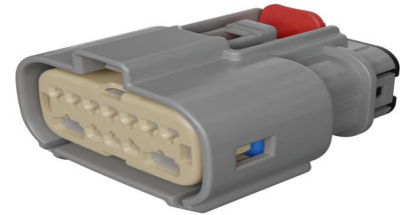
Part Number : [1601116007](#)

Product Description : MX150 Hybrid Mat-Sealed Female Connector Assembly, Dual Row, 12 Circuits, Keying Option B, with Connector Position Assurance, Light Gray

Series Number : 160111

Status : Active

Product Category : Connector Housings



Documents and Resources

Drawings

[1601116007 sd.pdf](#)

[1601118000-000.pdf](#)

[1601118002-000.pdf](#)

[1601119000-000.pdf](#)

[PK-31300-903-001.pdf](#)

3D Models and Design Files

[STEP AP242](#)

[SOLIDWORKS](#)

[Creo](#)

Specifications

[1601110001-AS-000.pdf](#)

[AS-33611-001-001.pdf](#)

[1601110001-PS-000.pdf](#)

Product Environment Compliance

Compliance

GADSL/IMDS	Compliant
China RoHS	Not Relevant
EU ELV	Compliant per 2000/53/EC
Low-Halogen Status	Not Relevant
REACH SVHC	Contains

	Dodecamethylcyclohexasiloxane; Decamethylcyclopentasiloxane; Octamethylcyclotetrasiloxane per D(2025)7771-DC (04 Feb 2026)
EU RoHS	Compliant per EU 2015/863

Compliance Statements

- EU RoHS
- REACH SVHC
- Low-Halogen

Industry Documents

- IPC 1752A Class C
- IPC 1752A Class D
- Molex Product Compliance Declaration
- IEC-62474
- chemSHERPA (xml)

Substances of Interest

- PFAS

EU RoHS Certificate of Compliance

Additional Product Compliance Information

Part Details

General

Status	Active
Category	Connector Housings
Series	160111
Description	MX150 Hybrid Mat-Sealed Female Connector Assembly, Dual Row, 12 Circuits, Keying Option B, with Connector Position Assurance, Light Gray
Application	Power, Wire-to-Wire, Automotive
Comments	With Connector Position Assurance (CPA)
Product Name	MX150
UPC	889056821698

Physical

Circuits (maximum)	12
Color - Resin	Gray (Light)
Gender	Receptacle
Glow-Wire Capable	No
Keying to Mating Part	Yes
Lock to Mating Part	Yes
Material - Resin	Nylon
Net Weight	20.104/g
Number of Rows	2
Packaging Type	Partitioned Carton
Panel Mount	No
Pitch - Mating Interface	3.50mm
Polarized to Mating Part	Yes
Stackable	No
Temperature Range - Operating	-40° to +125°C

Mates With / Use With

Mates with Part(s)

Description	Part Number
MX150 Hybrid Mat-Sealed, Dual Row, Male Connector Assemblies	<u>160112</u>

Use with Part(s)

Description	Part Number
MX150 Female Terminals	<u>33001</u>
MX150 Female Terminals	<u>33012</u>
Use With	Industry Standard Terminal 2.80mm

This document was generated on May 04, 2026