

6

5

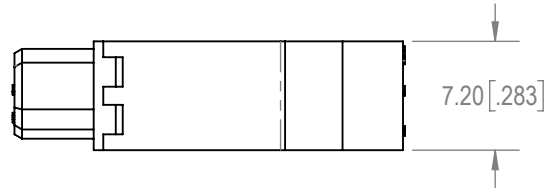
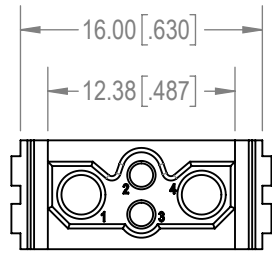
4

3

2

1

D



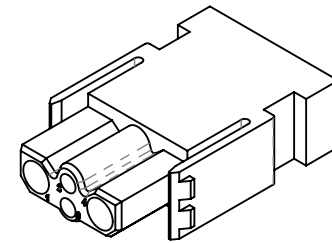
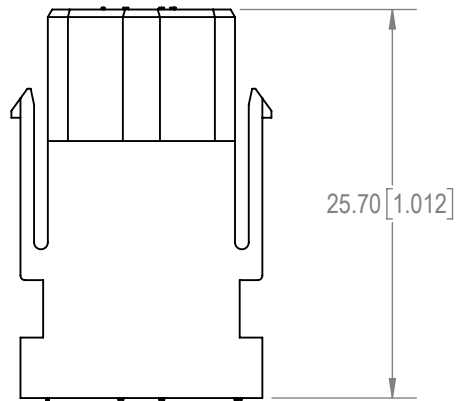
D

C

C

B

B




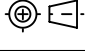
B

A

A

**NOTES:**

- MATERIAL:  
INSULATOR: GLASS FILLED NYLON, UL 94V-0 OR EQUIVALENT. COLOR: BLACK.  
CONTACTS: PRECISION MACHINED COPPER ALLOY WITH GOLD FLASH OVER NICKEL.  
REMOVABLE CONTACTS ARE TO BE ORDERED SEPARATELY.
- DETAILED PRODUCT, MECHANICAL AND ELECTRICAL INFORMATION IS AVAILABLE IN THE LATEST DRAGONFLY PRODUCT PUBLICATION AT [CONNECTPOSITRONIC.COM](http://CONNECTPOSITRONIC.COM).
- CONNECTORS ARE COMPLIANT TO THE CURRENT ROHS DIRECTIVE.

BY	GJ	CHK	LAW	3RD ANGLE	POSITRONIC BELIEVES THE DATA ON THE DRAWING TO BE RELIABLE. THE USER EMPLOYS SUCH INFORMATION AT HIS OWN DISCRETION AND RISK. POSITRONIC ASSUMES NO RESPONSIBILITY FOR RESULTS OBTAINED OR DAMAGES INCURRED FROM USE OF SUCH INFORMATION IN WHOLE OR IN PART.	 <b>Positronic</b> <sup>®</sup> CONNECTPOSITRONIC.COM
APR	PA	RELEASED DATE:	2019-01-10			
TOLERANCES				SCALE	NTS	PART NUMBER
±0.03mm [.001 INCHES] FOR MALE CONTACT MATING DIAMETERS ±0.08mm [.003 INCHES] FOR CONTACT TERMINATION DIAMETERS ±0.13mm [.005 INCHES] FOR ALL OTHER DIAMETERS ±0.38mm [.015 INCHES] FOR ALL OTHER DIMENSIONS ±5° FOR ALL ANGLES DIMENSION ARE IN MILLIMETERS [INCHES]						
				TITLE	DF	
				CREATED ON:	SHEET	SERIES
				2018-12-31	SHEET 1 OF 1	DF
						REV A

6

5

4

3

2

1