



Quality Products. Service Excellence.

## EMI/RFI Shielded Extruded Aluminum Enclosures 1457-EMI Series

EMI Gaskets, Heavy Duty, Optional Wall-Mounting Flanges



### Key Features:

- Tough watertight extruded enclosures designed to house PC boards or for equipment interfacing.
- Sized for standard Eurocards.
- PC boards mount horizontally by sliding into internal slots extruded into the enclosure body.
- Rugged body constructed from one piece of extruded aluminum with a minimum thickness of 0.06" (1.5 mm).
- Designed to meet IP54.
- Extruded aluminum body includes a recessed area for labels or membrane keypad.
- End panels are rugged yet easy to machine diecast aluminum with full perimeter conductive foam/fabric gaskets made of Ni/Cu (nickel/copper) and CPSA (conductive pressure sensitive adhesive).
- Choice of enclosure with flat end panels or enclosure with flanged end panels.

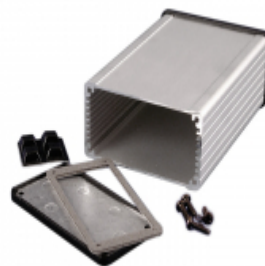


### Includes:

- Two diecast aluminum end panels painted in a durable, black satin powder paint.
- Extruded aluminum body in choice of clear anodized or black powder coat finish.
- Two adhesive conductive end plate gaskets.
- Stainless steel assembly hardware with rubber o-ring and adhesive rubber feet.
- Thread forming screws provided are black zinc plated for corrosion protection to ASTM B633-13:
  - to Type II rating (96 hour Salt Spray Test)
  - SC3 severe rating (12 micron thickness coating)
- Replacement assembly screws can be purchased in packs of 100 screws under part number 1457MS100
- NOTE: Recommended screw torque is 5 lbf/in



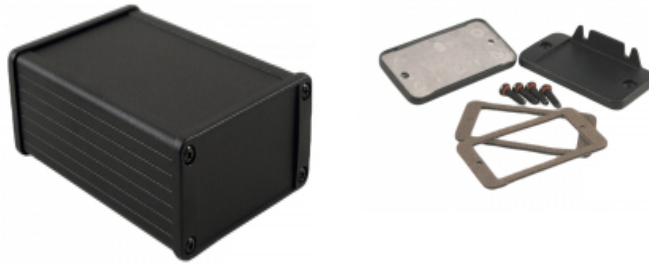
Available with black powder coat or clear anodize finish and with or without



Enclosure includes extruded body, die-cast end panels, gaskets (not water-tight), and hardware. Extra end panel

wallmounting flanges.

kits are sold separately.



## Enclosures

EMI Shielded, No Flanges	EMI Shielded w/ Flanges	Extrusion Color	Extrusion Length (mm)	Width (mm)	Height (mm)	Max PCB Length (mm)	Max PCB Width (mm)
1457C801E	1457C802E	Clear Anodize	80.00	59.00	31.00	80.00	55.00
1457C801EBK	1457C802EBK	Black Powder Coat	80.00	59.00	31.00	80.00	55.00
1457C1201E	1457C1202E	Clear Anodize	120.00	59.00	31.00	120.00	55.00
1457C1201EBK	1457C1202EBK	Black Powder Coat	120.00	59.00	31.00	120.00	55.00
1457J1201E	1457J1202E	Clear Anodize	120.00	84.00	28.50	120.00	80.00
1457J1201EBK	1457J1202EBK	Black Powder Coat	120.00	84.00	28.50	120.00	80.00
1457K1201E	1457K1202E	Clear Anodize	120.00	84.00	44.00	120.00	80.00
1457K1201EBK	1457K1202EBK	Black Powder Coat	120.00	84.00	44.00	120.00	80.00
1457L1201E	1457L1202E	Clear Anodize	120.00	104.00	32.00	120.00	100.00
1457L1201EBK	1457L1202EBK	Black Powder Coat	120.00	104.00	32.00	120.00	100.00
1457N1201E	1457N1202E	Clear Anodize	120.00	104.00	55.00	120.00	100.00
1457N1201EBK	1457N1202EBK	Black Powder Coat	120.00	104.00	55.00	120.00	100.00
1457J1601E	1457J1602E	Clear Anodize	160.00	84.00	28.50	160.00	80.00
1457J1601EBK	1457J1602EBK	Black Powder Coat	160.00	84.00	28.50	160.00	80.00
1457K1601E	1457K1602E	Clear Anodize	160.00	84.00	44.00	160.00	80.00
1457K1601EBK	1457K1602EBK	Black Powder Coat	160.00	84.00	44.00	160.00	80.00
1457L1601E	1457L1602E	Clear Anodize	160.00	104.00	32.00	160.00	100.00

EMI Shielded, No Flanges	EMI Shielded w/ Flanges	Extrusion Color	Extrusion Length (mm)	Width (mm)	Height (mm)	Max PCB Length (mm)	Max PCB Width (mm)
1457L1601EBK	1457L1602EBK	Black Powder Coat	160.00	104.00	32.00	160.00	100.00
1457N1601E	1457N1602E	Clear Anodize	160.00	104.00	55.00	160.00	100.00
1457N1601EBK	1457N1602EBK	Black Powder Coat	160.00	104.00	55.00	160.00	100.00
1457T1601E	1457T1602E	Clear Anodize	160.00	165.50	54.00	160.00	160.00
1457T1601EBK	1457T1602EBK	Black Powder Coat	160.00	165.50	54.00	160.00	160.00
1457U1601E	1457U1602E	Clear Anodize	160.00	191.00	67.50	160.00	186.00
1457U1601EBK	1457U1602EBK	Black Powder Coat	160.00	191.00	67.50	160.00	186.00
1457T2201E	1457T2202E	Clear Anodize	220.00	165.50	54.00	220.00	160.00
1457T2201EBK	1457T2202EBK	Black Powder Coat	220.00	165.50	54.00	220.00	160.00
1457U2201E	1457U2202E	Clear Anodize	220.00	191.00	67.50	220.00	186.00
1457U2201EBK	1457U2202EBK	Black Powder Coat	220.00	191.00	67.50	220.00	186.00
1457U2801E	1457U2802E	Clear Anodize	280.00	191.00	67.50	280.00	186.00
1457U2801EBK	1457U2802EBK	Black Powder Coat	280.00	191.00	67.50	280.00	186.00

### Replacement End Panels

Enclosure Part Number	End Panel Kit (No Mounting Flanges)		End Panel Kit w/ Integrated Mounting Flanges	
	Beginning With	2-pack	10-pack	2-pack
1457C	1457CEP	1457CEP-10	1457CEPF	1457CEPF-10
1457J	1457JEP	1457JEP-10	1457JEPF	1457JEPF-10
1457K	1457KEP	1457KEP-10	1457KEPF	1457KEPF-10
1457L	1457LEP	1457LEP-10	1457LEPF	1457LEPF-10
1457N	1457NEP	1457NEP-10	1457NEPF	1457NEPF-10
1457T	1457TEP	1457TEP-10	1457TEPF	1457TEPF-10
1457U	1457UEP	1457UEP-10	1457UEPF	1457UEPF-10

### Replacement Gaskets

Enclosure Part Number	Water-Tight Gaskets	EMI Gaskets
Beginning With	10-pack	10-pack
1457C	1457CPG-10	1457CEG-10
1457J	1457JPG-10	1457JEG-10
1457K	1457KPG-10	1457KEG-10
1457L	1457LPG-10	1457LEG-10
1457N	1457NPG-10	1457NEG-10
1457T	1457TPG-10	1457TEG-10

Enclosure Part Number	Water-Tight Gaskets	EMI Gaskets
Beginning With	10-pack	10-pack
1457U	1457UPG-10	1457UEG-10

Tags: **extrusion, extruded, PCB slot, PCB enclosure, board mount, emi, rfi, shielded, emi/rfi**

*Data subject to change without notice*

© 2026. Hammond Manufacturing Ltd. All rights reserved.