



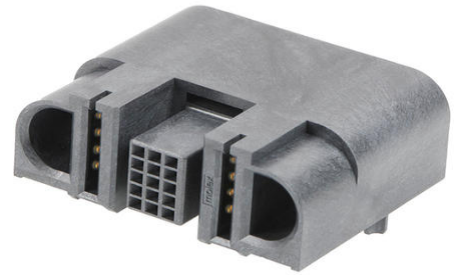
**Part Number :** [2141150011](#)

**Product Description :** EXTreme Guardian Right-Angle Receptacle Assembly with Guide Receivers, 1 Power Circuit, 15 Signal Circuits, 1 Power Circuit

**Series Number :** 214115

**Status :** Active

**Product Category :** Board-to-Board Connectors



---

## Documents and Resources

### Drawings

[2141150011\\_sd.pdf](#)

### 3D Models and Design Files

[STEP AP242](#)

[SOLIDWORKS](#)

[Creo](#)

[Symbol and Footprint \(Multi-Format\)](#)


### Specifications

[2141130000-PS-000.pdf](#)

---

## Product Environment Compliance

### Compliance

GADSL/IMDS	Not Relevant
China RoHS	 per SJ/T 11365-2006
EU ELV	Not Relevant
Low-Halogen Status	Low-Halogen per IEC 61249-2-21
REACH SVHC	Not Contained per D(2025)7771-DC (04 Feb 2026)
EU RoHS	Compliant per EU 2015/863

### [Compliance Statements](#)

- EU RoHS
- REACH SVHC

- Low-Halogen

#### Industry Documents

- IPC 1752A Class C
- IPC 1752A Class D
- Molex Product Compliance Declaration
- IEC-62474
- chemSHERPA (xml)

#### Substances of Interest

- PFAS

#### EU RoHS Certificate of Compliance

#### Additional Product Compliance Information

---

## Part Details

### General

Status	Active
Category	Board-to-Board Connectors
Series	214115
Description	EXTreme Guardian Right-Angle Receptacle Assembly with Guide Receivers, 1 Power Circuit, 15 Signal Circuits, 1 Power Circuit
Application	Board-to-Board, Power, Signal
Component Type	Receptacle
Product Name	EXTreme Guardian HD
UPC	193264618729

### Agency

CSA	LR19980
UL	E29179

### Electrical

Current - Maximum per Contact	80.0A
Voltage - Maximum	125V

### Physical

Circuits (Loaded)	17
Circuits (maximum)	17

Color - Resin	Black
Durability (mating cycles max)	200
Flammability	94V-0
Glow-Wire Capable	No
Guide to Mating Part	Yes
Keying to Mating Part	No
Lock to Mating Part	No
Material - Metal	High Conductivity Copper
Material - Plating Mating	Gold
Material - Plating Termination	Tin
Material - Resin	Liquid Crystal Polymer (LCP)
Net Weight	14.690/g
Number of Rows	1, 5
Orientation	Right Angle
Packaging Type	Tray
PCB Locator	Yes
PCB Retention	Yes
PCB Thickness - Recommended	1.58mm
PC Tail Length	2.50mm, 3.30mm
Pitch - Mating Interface	2.00mm
Plating min - Mating	0.762µm
Plating min - Termination	2.540µm
Polarized to Mating Part	Yes
Polarized to PCB	Yes
(p)ower-(s)ignal Configuration	1p - 15s - 1p
Temperature Range - Operating	-40° to +105°C
Termination Interface Style	Through Hole - Compliant Pin

---

## Mates With / Use With

### Mates with Part(s)

Description	Part Number
EXTreme Guardian Right-Angle Plug Assembly with Guide Pins, 1 Power Circuit, 15 Signal Circuits, 1 Power Circuit	<u>2141130011</u>

---

# Application Tooling

---

This document was generated on Apr 25, 2026