



Pushing Performance  
Since 1945

# Han Domino RJ45 cube, IDC cat6 M.1

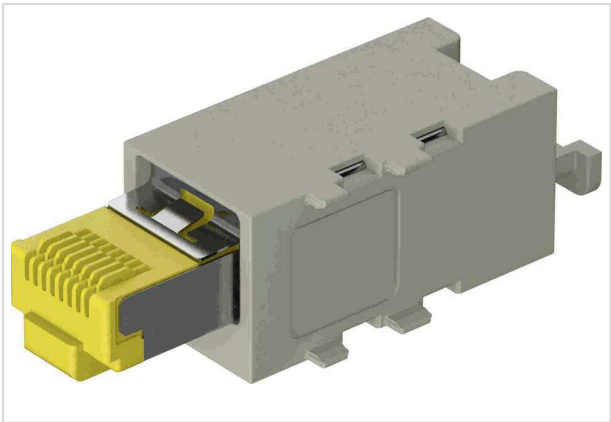


Image is for illustration purposes only. Please refer to product description.

|                    |   |
|--------------------|---|
| Part number        | 09 14 945 1002  |
| Specification      | Han Domino RJ45 cube, IDC cat6 M.1  |
| HARTING eCatalogue | <a href="https://harting.com/09149451002">https://harting.com/09149451002</a> |

## Identification

|                           |                       |
|---------------------------|-----------------------|
| Category                  | Modules               |
| Series                    | Han-Modular®          |
| Type of module            | Han® Domino RJ45 Cube |
| Size of the module        | Domino module         |
| Description of the module | Small tab             |

## Version

|                    |   |
|--------------------|---|
| Termination method | IDC insulation displacement termination |
| Gender             | Male                                    |
| Shielding          | Shielded                                |
| Number of contacts | 8                                       |

## Technical characteristics

|                               |   |
|-------------------------------|---|
| Conductor cross-section [AWG] | AWG 27/7 ... AWG 22/7 Stranded<br>AWG 27/1 ... AWG 22/1 Solid |
| Wire outer diameter           | ≤1.6 mm   |
| Rated current                 | 1 A   |
| Rated voltage                 | 50 V  |
| Rated impulse voltage         | 0.8 kV  |
| Pollution degree              | 3   |
| Transmission characteristics  | Cat. 6 Class E up to 250 MHz                                  |



**Pushing Performance**  
Since 1945

## Technical characteristics

|                       |                   |
|-----------------------|-------------------|
| Data rate             | 10 Mbit/s         |
|                       | 100 Mbit/s        |
|                       | 1 Gbit/s          |
|                       | 2.5 Gbit/s        |
|                       | 5 Gbit/s          |
|                       | 10 Gbit/s         |
| Insulation resistance | $>10^{10} \Omega$ |
| Limiting temperature  | -40 ... +70 °C    |
| Mating cycles         | $\geq 500$        |

## Material properties

|   |                        |
|---|------------------------|
| Material (insert)                         | Polyamide (PA)         |
|   | Polycarbonate (PC)     |
| Colour (insert)                           | RAL 7032 (pebble grey) |
| Material flammability class acc. to UL 94 | V-0                    |
| RoHS                                      | compliant              |
| ELV status                                | compliant              |
| China RoHS                                | e                      |
| REACH Annex XVII substances               | Not contained          |
| REACH ANNEX XIV substances                | Not contained          |
| REACH SVHC substances                     | Not contained          |
| California Proposition 65 substances      | Not contained          |

## Specifications and approvals

|                |             |
|----------------|-------------|
| Specifications | IEC 60664-1 |
|                | IEC 61984   |
|                | IEC 60603-7 |

## Commercial data

|                                |  |
|--------------------------------|--|
| Packaging size                 | 1  |
| Country of origin              | Romania  |
| European customs tariff number | 85366990   |
| GTIN                           | 5713140398672                                    |
| eCl@ss                         | 27440218 Module for industrial connectors (data) |
| ETIM                           | EC000438   |
| UNSPSC 24.0                    | 39121552   |