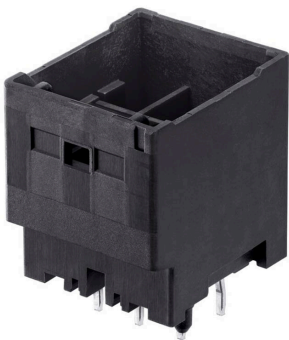




Part Number : [2122100041](#)
Product Description : CP-3.3 Header, 3.30mm Pitch, Dual Row, Vertical, Polarized, Positive Lock, Glow-Wire Capable, 4 Circuits, with Potting Capability, Black
Series Number : 212210
Status : Active
Product Category : PCB Headers and Receptacles



Documents & Resources

Drawings
[2122100041_sd.pdf](#)

3D Models and Design Files
[2122100041_stp.zip](#)

Specifications
[2122109200-SPK-200.pdf](#)
[2122090000-PS-000.pdf](#)

Product Environment Compliance

Compliance

GADSL/IMDS	Not Relevant
China RoHS	
EU ELV	Not Relevant
Low-Halogen Status	Not Low-Halogen per IEC 61249-2-21
REACH SVHC	Not Contained per D(2024)6225-DC (07 Nov 2024)
EU RoHS	Compliant per EU 2015/863

Multiple Part Product Compliance Statements
- Eu RoHS
- REACH SVHC
- Low-Halogen

Multiple Part Industry Compliance Documents

- IPC 1752A Class C
- IPC 1752A Class D
- Molex Product Compliance Declaration
- IEC-62474
- chemSHERPA (xml)

EU RoHS Certificate of Compliance

Part Details

General

Status	Active
Category	PCB Headers and Receptacles
Series	212210
Description	CP-3.3 Header, 3.30mm Pitch, Dual Row, Vertical, Polarized, Positive Lock, Glow-Wire Capable, 4 Circuits, with Potting Capability, Black
Application	Power, Wire-to-Board
Component Type	PCB Header
Product Name	CP-3.3
UPC	193264099740

Agency

UL	E29179
----	--------

Electrical

Current - Maximum per Contact	8.5A
Voltage - Maximum	500V AC/DC

Physical

Breakaway	No
Circuits (Loaded)	4
Circuits (maximum)	4
Color - Resin	Black
First Mate / Last Break	No
Flammability	94V-0
Glow-Wire Capable	Yes

Guide to Mating Part	No
Keying to Mating Part	Yes
Lock to Mating Part	Yes
Material - Metal	Copper Alloy
Material - Plating Mating	Matte Tin
Material - Plating Termination	Matte Tin
Material - Resin	Polyamide
Net Weight	1037.640/mg
Number of Rows	2
Orientation	Vertical
Packaging Type	Tray
PC Tail Length	3.35mm
PCB Locator	Yes
PCB Retention	Yes
PCB Thickness - Recommended	1.60mm
Pitch - Mating Interface	3.30mm
Polarized to Mating Part	Yes
Polarized to PCB	Yes
Temperature Range - Operating	-40° to +105°C
Termination Interface Style	Through Hole

Mates With / Use With

Mates with Part(s)

Description	Part Number
CP-3.3 Dual Row Receptacle Housings	<u>212209</u>

This document was generated on Jan 12, 2025