



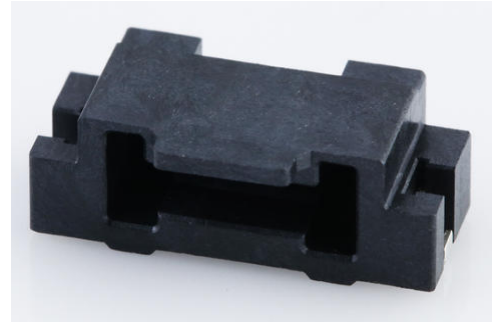
Part Number : [5051470290](#)

Product Description : Easy-On Flexi-Latch FPC-to-Board Connector, 2.00mm Pitch, Right-Angle, Surface Mount, Positive Inertia Lock, 2 Circuits

Series Number : 505147

Status : Active

Product Category : FFC / FPC Connectors



Documents and Resources

Drawings

[5051470290_sd.pdf](#)

3D Models and Design Files

[STEP AP242](#)

[SOLIDWORKS](#)

[Creo](#)

[Symbol and Footprint \(Multi-Format\)](#)


Specifications

[5051479200-200.pdf](#)

[5051470000-000.pdf](#)

Product Environment Compliance

Compliance

GADSL/IMDS	Compliant with Exemption 33; 44; 34
China RoHS	 per SJ/T 11365-2006
EU ELV	Not Relevant
Low-Halogen Status	Low-Halogen per IEC 61249-2-21
REACH SVHC	Not Contained per D(2025)7771-DC (04 Feb 2026)
EU RoHS	Compliant per EU 2015/863

[Compliance Statements](#)

- EU RoHS
- REACH SVHC
- Low-Halogen

Industry Documents

- IPC 1752A Class C
- IPC 1752A Class D
- Molex Product Compliance Declaration
- IEC-62474
- chemSHERPA (xml)

Substances of Interest

- PFAS

EU RoHS Certificate of Compliance

Additional Product Compliance Information

Part Details

General

Status	Active
Category	FFC / FPC Connectors
Series	505147
Description	Easy-On Flexi-Latch FPC-to-Board Connector, 2.00mm Pitch, Right-Angle, Surface Mount, Positive Inertia Lock, 2 Circuits
Component Type	Receptacle
Product Name	Easy-On
UPC	887191676289

Agency

UL	E29179
----	--------

Electrical

Current - Maximum per Contact	2.0A
Voltage - Maximum	125V

Physical

Actuator Type	Flexi-Latch
Circuits (Loaded)	2

Color - Resin	Black
Contact Position	Bottom
Durability (mating cycles max)	25
Flammability	94V-0
Mated Height	4.85mm
Material - Metal	Copper Alloy
Material - Plating Mating	Gold
Material - Plating Termination	Gold
Material - Resin	Liquid Crystal Polymer
Net Weight	418.100/mg
Orientation	Right Angle
Packaging Type	Embossed Tape on Reel
PCB Locator	No
PCB Mounting	Surface Mount
PCB Retention	No
Pitch - Mating Interface	2.00mm
Plating min - Mating	0.102µm
Plating min - Termination	0.051µm
Polarized to PCB	Yes
Stackable	No
Temperature Range - Operating	-40° to +125°C
Wire/Cable Type	FPC only

Mates With / Use With

Mates with Part(s)

Description	Part Number
Easy-On Flexi-Latch FPC-to-Board Jacket, 2.00mm Pitch, 2 Circuits	<u>5051480208</u>

This document was generated on Apr 11, 2026