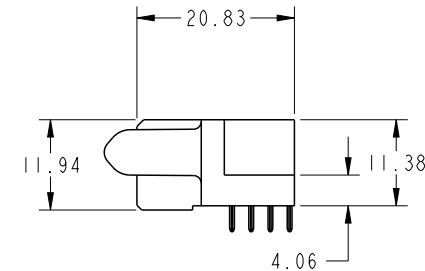
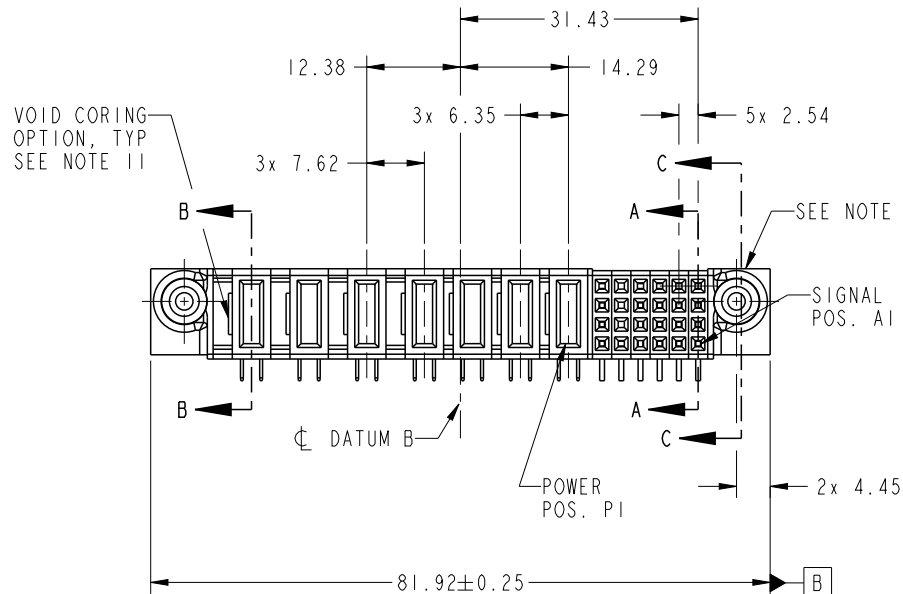




Copyright FCI.

PRODUCT NO.	ROWS	POWER								SIGNAL							
		E2	P7	P6	P5	P4	P3	P2	P1	6	5	4	3	2	1	E1	
51771-029-- NOTE 3	D C B A		PA	PA	PA	PA	PA	PA	PA	H	X	H	H	H	H		
										G	X	G	G	G	G		
										F	X	X	F	F	F		
										E	X	E	E	E	E		



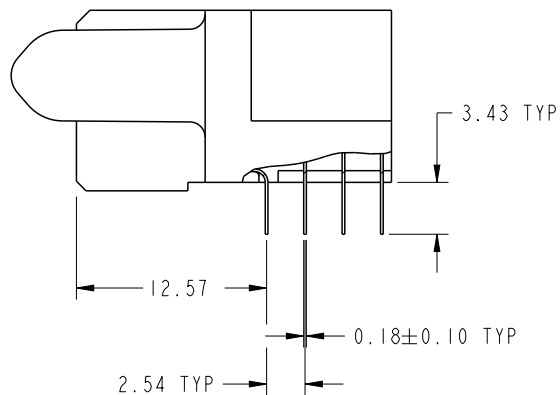
CODE	DIM "M" MATING LENGTH	CONTACT TYPE
PA	[1.07]	POWER
H	[N/A]	SIGNAL
G	[N/A]	SIGNAL
F	[N/A]	SIGNAL
E	[N/A]	SIGNAL
X	OMITTED	

spec ref		SEE NOTES				dr		De-Ming Lu		2015/02/09		projection				size		A4		scale		1:1									
tolerance std		TOLERANCES UNLESS OTHERWISE SPECIFIED				eng		De-Ming Lu		2015/03/06						ecn no		-													
SEE NOTES						chr		-		-																					
						appr		Pei-Ming Zheng		2015/03/06						product family				PwrBlade				rel level				Released			
surface				linear		0.X		±0.50				title		24S + 4P + 3ACP		dwg no		51771-029		rev		A									
				0.XX		±0.25																									
				0.XXX		±0.10																									
		angular		0°		±2°		www.fci.com		cat. no.		Product - Customer Drw				sheet 1 of 4															

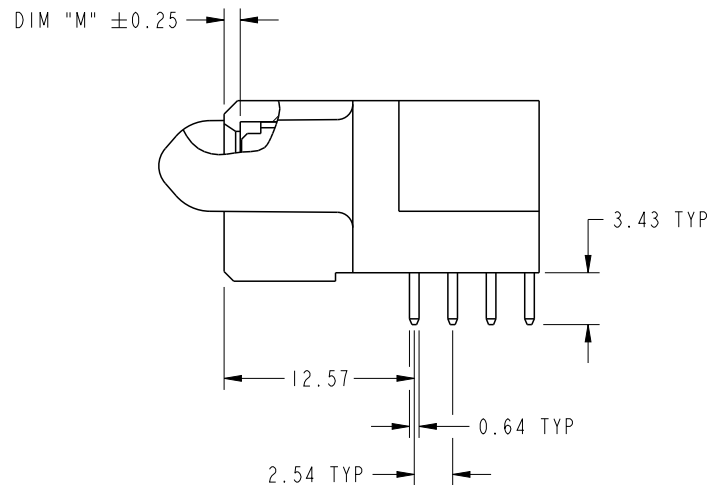
PrintE File - REV C - 2009-06-09

PRODUCT NUMBER

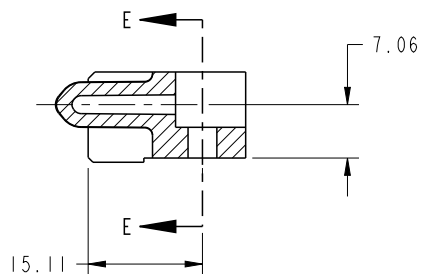
51771-029__
NOTE 3



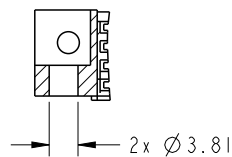
BROKEN-OUT SECTION A-A
SCALE 2:1



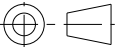


BROKEN-OUT SECTION B-B
SCALE 2:1



SECTION C-C

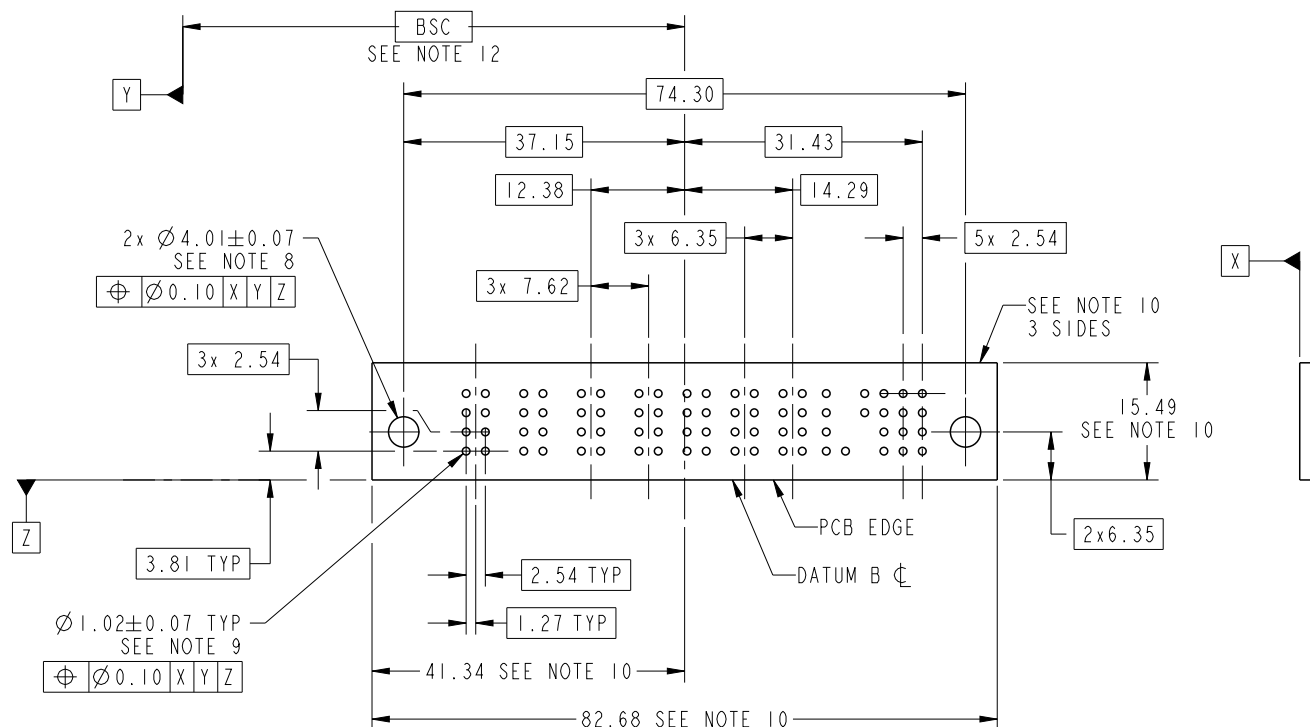


PARTIAL SECTION E-E

dr	De-Ming Lu	2015/02/09	<div>projection</div> <div></div>	<div>MM</div> <div></div>	size	A4	scale	1:1							
eng	De-Ming Lu	2015/03/06			ecn no				-						
chr	-	-			rel level				Released						
appr	Pei-Ming Zheng	2015/03/06	product family		PwrBlade										
<div></div>		title			24S + 4P + 3ACP			dwg no		51771-029		rev		A	
www.fci.com		cat. no.			Product - Customer Drw							sheet 2 of 4			
		R/A SOLDER RECEPTACLE													

PRODUCT NUMBER

51771-029__
NOTE 3



RECOMMENDED PCB LAYOUT

dr	De-Ming Lu	2015/02/09	<div>projection</div> <div></div>	<div>MM</div> <div></div>	size	A4	scale	1:1	
eng	De-Ming Lu	2015/03/06			ecn no	Released			
chr	-	-							
appr	Pei-Ming Zheng	2015/03/06	product family		PwrBlade				rel level
	title				dwg no		rev		
	24S + 4P + 3ACP				51771-029		A		
R/A SOLDER RECEPTACLE									
www.fci.com	cat. no.		Product - Customer Drw			sheet 3 of 4			



Copyright FCI.

PRODUCT NUMBER
51771-029__
NOTE 3

NOTES:

1. DIMENSIONS AND TOLERANCES ARE IN ACCORDANCE WITH
ASME Y14.5M, 1994 UNLESS OTHERWISE SPECIFIED.

CONNECTOR NOTES:

- 2. HOUSING MATERIAL: UL 94 V-0 GLASS FILLED HIGH-TEMP THERMOPLASTIC
POWER CONTACT MATERIAL: COPPER ALLOY
SIGNAL PIN MATERIAL: COPPER ALLOY
- 3. SEE ITEM 5 & 6 IN PRINT 10064183 FOR PLATING SPEC OF 51771-029 AND 51771-029LF RESPECTIVELY.
- 4. MANUFACTURER'S NAME, DATE CODE AND OPTIONAL P/N TO APPEAR ON
THIS SURFACE. THE MARK CAN BE OMITTED IF THERE IS NOT ENOUGH SPACE
ON THIS SURFACE.
- 5. PRODUCT SPECIFICATION GS-12-149.
APPLICATION SPECIFICATION BUS-20-067.
- 6. PACKAGED IN TRAYS.
- PCB NOTES:
- 7. ALL HOLE DIAMETERS ARE FINISHED HOLE SIZE.
- 8. MOUNTING HOLES, WHERE APPLICABLE, ARE UNPLATED.
- 9. $\varnothing 1.151 \pm 0.025$ DRILLED HOLES PLATED WITH
0.008 MIN SnPb OR Sn OVER 0.03
TO 0.08 Cu PLATING TO ACHIEVE
 $\varnothing 1.02 \pm .07$ HOLE.
- 10. CONNECTOR KEEP-OUT ZONE.
- 11. THE VOID CORING IN BETWEEN POWER MODULES, SIGNAL
MODULES AND END MODULES ARE OPTIONAL AND THE SHAPE
MAY BE DIFFERENT FOR OPTIMIZE THE MOLDING PROCESS. THE
VOID CORING WILL NOT EFFECT TO PRODUCT FUNCTION.
- 12. DATUM AND BASIC DIMENIONS ARE ESTABLISHED BY CUSTOMER.

dr	De-Ming Lu	2015/02/09	<div>projection</div>	<div>MM</div>	size	A4	scale	1:1
eng	De-Ming Lu	2015/03/06			ecn no			
chr	-	-						
appr	Pei-Ming Zheng	2015/03/06	product family		PwrBlade	rel level		Released
	title				dwg no		rev	
	24S + 4P + 3ACP				51771-029		A	
	R/A SOLDER RECEPTACLE							
www.fci.com	cat. no.		Product - Customer Drw			sheet 4 of 4		