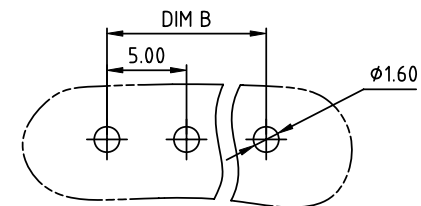
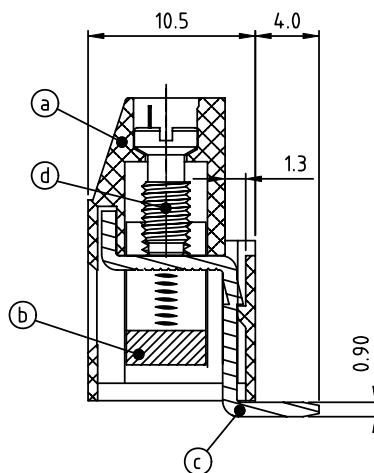
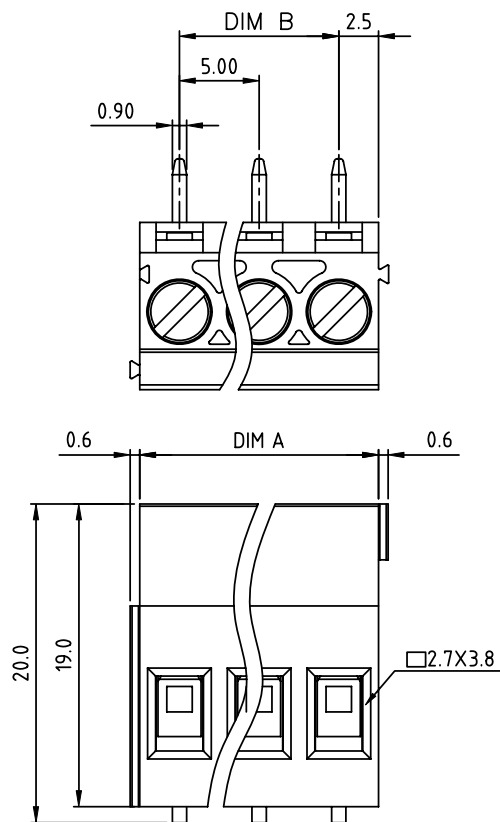


PRODUCT NUMBER	PITCH
VJxx01x300J0G	5.00mm



RECOMMENDED P.C.B LAYOUT
TOP VIEW

Material:

- Item(a) Terminal housing: Thermoplastic (UL 94V-0)
- Item(b) Clamp: Brass Ni plated
- Item(c) Solder pin: Brass Tin plated
- Item(d) Terminal screw: Steel Zinc plating"- "slot type

Electrical cULus

- Voltage rating: 300VAC 450V
- Current rating: 20A 24A
- Wire range : 0.2-2.5mm²
- Solid wire(AWG): 12-30
- Stranded wire(AWG): 12-30
- Torque: 3.5Lb-in 0.5 N.m
- Screw: M3
- Wire strip length: 6-7mm
- Withstanding Voltage: 1.6KV 2.5KV
- Operating temperature: -40°C to +115°C
- Soldering temperature: 260°C±5°C/5 Sec
- Safety Approval: cULus VDE

Dimension A&B

DIM A	N×5.0
DIM B	(N-1)×5.0

N=Number of poles




Poles	DimA&B Tolerance
4P-8P	±0.15
9P-14P	±0.25
15P-20P	±0.35
21P-24P	±0.40

PART NO.: VJ xx 0 1 x 3 00J0 G

Solid block
No. of poles
04 4 poles
05 5 poles
...
24 24 poles

Color
0 Black (RAL9005)
2 Red (RAL3001/D)
3 Orange(RAL2011/P)
4 Yellow(RAL1018/A)
5 Green(RAL6018/T)
6 Blue (RAL5015/A)
8 Grey(RAL7035/D)
9 White(RAL1102)
C Green(RAL6018/U)

RoHS compliant
(lead<4%)
In copper Alloy

mat'l. code				surface ASME Y14.5		tolerance ASME Y14.5		projection 		product family TERMINAL BLOCK													
ltr ecn no dr date				tolerances unless otherwise specified								title TERMINAL BLOCK											
				angles		X.±0.5		RISING CLAMP, 90D WIRE INLET, SOLID BLOCK															
				pos		X.X±0.3																	
				ele		X.XX±0.1																	
				dr		EVIN ZHONG 040914				dwg no sheet 1 of 1 size													
				enrg		EVIN ZHONG 040914				VJxx01x300J0G A4													
				chr		HANKE FENG 040914																	
				appd		SHI JUN 040914				type CUSTOMER Drawing													
sheet index		revision sheet		A 1																			