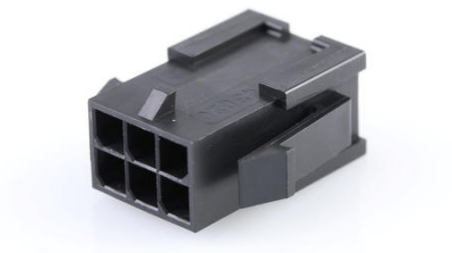




**Part Number :** [430200600](#)  
**Product Description :** Micro-Fit 3.0 Plug Housing,  
Dual Row, 6 Circuits, UL 94V-0, Panel Mount Ears, Low-  
Halogen, Black  
**Series Number :** 43020  
**Status :** Active  
**Product Category :** Connector Housings



## Documents & Resources

### Drawings

[430200600 sd.pdf](#)

### 3D Models and Design Files

[STEP AP242](#)

[SOLIDWORKS](#)

[Creo](#)

### Specifications

[PK-43020-001-001.pdf](#)

[430450001-PS-KO-000.pdf](#)

[430450001-PS-SP-000.pdf](#)

[PS-43045-001.pdf](#)

[430450005-TS-000.pdf](#)

[430450007-TS-000.pdf](#)


[TS-43045-001-001.pdf](#)

[TS-43045-003-001.pdf](#)

[TS-46235-001-001.pdf](#)

## Product Environment Compliance

### Compliance

GADSL/IMDS	Not Relevant
China RoHS	 per SJ/T 11365-2006
EU ELV	Not Relevant

Low-Halogen Status	Low-Halogen per IEC 61249-2-21
REACH SVHC	Not Contained per D(2025)4165-DC (25 June 2025)
EU RoHS	Compliant per EU 2015/863

#### Compliance Statements

- EU RoHS
- REACH SVHC
- Low-Halogen

#### Industry Documents

- IPC 1752A Class C
- IPC 1752A Class D
- Molex Product Compliance Declaration
- IEC-62474
- chemSHERPA (xml)

#### Substances of Interest

- PFAS

#### EU RoHS Certificate of Compliance

#### Additional Product Compliance Information

## Part Details

### General

Status	Active
Category	Connector Housings
Series	43020
Description	Micro-Fit 3.0 Plug Housing, Dual Row, 6 Circuits, UL 94V-0, Panel Mount Ears, Low-Halogen, Black
Application	Power, Wire-to-Wire
Product Name	Micro-Fit 3.0
UPC	800754383356

### Agency

CSA	LR19980
UL	E29179

### Physical

Circuits (maximum)	6
Color - Resin	Black
Flammability	94V-0
Gender	Plug
Glow-Wire Capable	No
Keying to Mating Part	None
Lock to Mating Part	Yes
Material - Resin	Nylon
Net Weight	0.912/g
Number of Rows	2
Packaging Type	Bag
Panel Mount	Yes
Pitch - Mating Interface	3.00mm
Pitch - Termination Interface	3.00mm
Polarized to Mating Part	Yes
Stackable	No
Temperature Range - Operating	-40° to +105°C

### Solder Process Data

Lead-Free Process Capability	N/A
------------------------------	-----

---

## Mates With / Use With

### Mates with Part(s)

Description	Part Number
Micro-Fit 3.0 Dual Row Receptacle Housings	<u><a href="#">43025</a></u>
Micro-Fit 3.0 Female-to-Micro-Fit 3.0 Female Off-the-Shelf (OTS) Cable Assemblies	<u><a href="#">214755</a></u>
Micro-Fit 3.0 Female-to-Pigtail Off-the-Shelf (OTS) Cable Assemblies	<u><a href="#">214756</a></u>
Micro-fit 3.0-to-Micro-Fit 3.0 Off-the-Shelf (OTS) Overmolded Adapters and Cable Assemblies	<u><a href="#">245132</a></u>
Micro-Fit TPA-to-Micro-Fit TPA Off-	<u><a href="#">45132</a></u>

the-Shelf (OTS) Cable Assemblies	
----------------------------------	--

**Use with Part(s)**

Description	Part Number
Micro-Fit Male Crimp Terminals	<u>43031</u>
Pre-Crimped Lead Micro-Fit 3.0 Male-to-Micro-Fit 3.0 Male	<u>214762</u>
Pre-Crimped Lead Micro-Fit 3.0 Male-to-Pigtail	<u>214763</u>

---

This document was generated on Sep 24, 2025