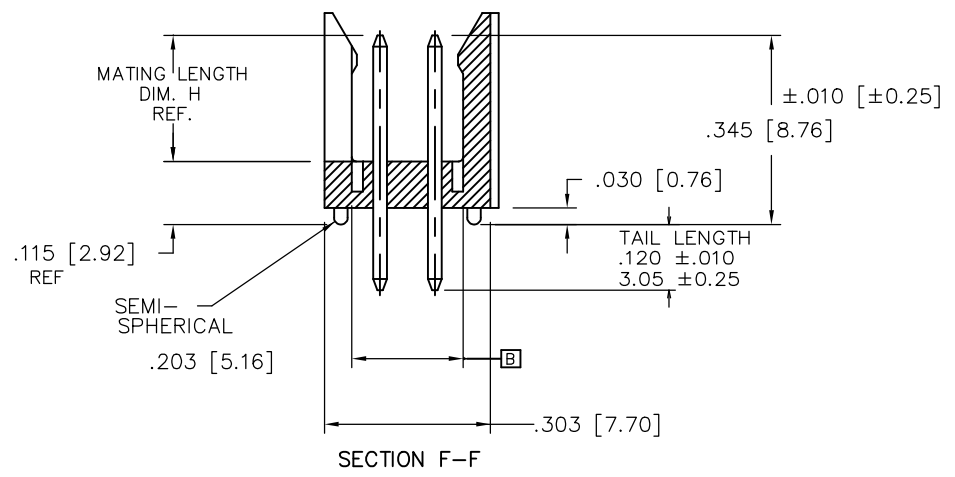
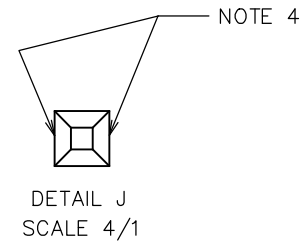
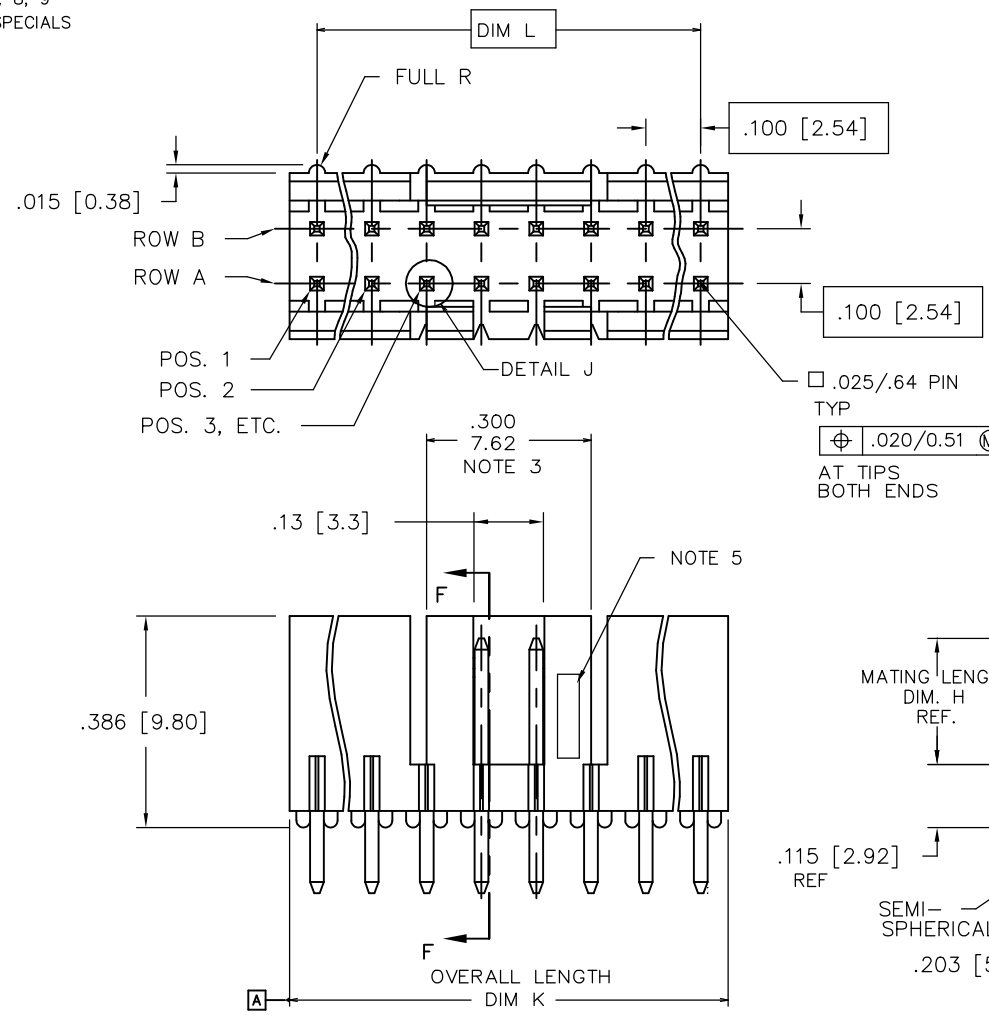



PRODUCT NUMBER
69168-XYZHLF

- LEAD FREE OPTION
SEE NOTE 7, 8, 9
- CUSTOMER SPECIALS
SEE NOTE 6
- NO. OF POS.
SEE TABLE
- PIN PLATING
- BASE P/N



Mat'l. code NOTES 1 & 2				surface ISO 1302 ✓		tolerance ISO 406 ISO 1101		projection 		product family			
ltr		ecn no		dr		date		tolerances unless otherwise specified				title	
M		ELX-N-01899		JZ		05/31/12		angles		linear		FRICION LATCH HEADER	
N		ELX-N-37212		M.Z		05/29/20		0°±2°		XXX.X/XXX.X XXX.X/XXX.X XXX.X/XXX.X		DOUBLE ROW VERTICAL	
										scale 1:1			
								dr		L.SADERS		5/3/95	
								enr		L.FYE		5/3/95	
								chr		T.BREWBAKER		5/3/95	
								appd		L.FYE		5/3/95	
sheet index		revision		N		N							
		sheet		1		2							



D

PRODUCT NUMBER	NO.OF POS.	MATING LENGTH DIM H	OVERALL LENGTH DIM K	DIM L	NOTES
69168-X06	2 X 3	0.230/5.84	0.300/7.62	0.200/5.08	
-X08	2 X 4	0.230/5.84	0.400/10.16	0.300/7.62	
-X08A	2 X 4	0.210/5.33	0.400/10.16	0.300/7.62	NOTE 6
-X10	2 X 5	0.230/5.84	0.500/12.70	0.400/10.16	
-X10A	2 X 5	0.210/5.33	0.500/12.70	0.400/10.16	NOTE 6
-X12	2 X 6	0.230/5.84	0.600/15.24	0.500/12.70	
-X14	2 X 7	0.230/5.84	0.700/17.78	0.600/15.24	
-X16	2 X 8	0.230/5.84	0.800/20.32	0.700/17.78	
-X16A	2 X 8	0.210/5.33	0.800/20.32	0.700/17.78	NOTE 6
-X18	2 X 9	0.230/5.84	0.900/22.86	0.800/20.32	
-X18A	2 X 9	0.210/5.33	0.900/22.86	0.800/20.32	NOTE 6
-X20	2 X 10	0.230/5.84	1.000/25.40	0.900/22.86	
-X22	2 X 11	0.230/5.84	1.100/27.94	1.000/25.40	
-X24	2 X 12	0.230/5.84	1.200/30.48	1.100/27.94	
-X26	2 X 13	0.230/5.84	1.300/33.02	1.200/30.48	
-X28	2 X 14	0.230/5.84	1.400/35.56	1.300/33.02	
69168-X30	2 X 15	0.230/5.84	1.500/38.10	1.400/35.56	

PIN PLATING CODES

-1YY	30u"/.76u (SEE NOTE 10) 50u"/1.27u Ni
-2YY	15u/.38u (SEE NOTE 10) 50u"/1.27u Ni
-3YY	50u"/1.27u (SEE NOTE 10) 50u"/1.27u Ni
-4YY	100u"/2.54u MIN Sn 50u"/1.27u Ni (SEE NOTE 11)
-4YYHLF	
-5YY	15u"/.38u (SEE NOTE 10) 50u"/1.27u Ni
-6YY	30u"/.76u (SEE NOTE 10) 50u"/1.27u Ni
-7YY	30u"/.76u (SEE NOTE 10) OVER 50u"/1.27u Ni
-8YY	15u"/.38u (SEE NOTE 10) OVER 50u"/1.27u Ni

NOTES:

1. MOLDING MAT'L: GLASS REINFORCED HTN, COLOR: BLACK
FLAME RETARDANT PER UL 94 V-0
MAXIMUM OPERATING TEMPERATURE: 130° C
OR
MINERAL FILLED LCP, COLOR BLACK
FLAME RETARDANT PER UL 94 V-0

2. PIN MATERIAL: 3/4 HD PHOS. BRZ.

③ NO SLOTS ON 2 X 5 POSITION OR SMALLER
PRODUCT. THE CENTER KEY SLOT WILL BE ON
ALL HEADERS REGARDLESS OF SIZE.

④ TWO NON-CRITICAL SIDES OF PIN TIP
NOT PLATED, BOTH ENDS.

⑤ COMPANY LOGO MAY APPEAR IN THIS AREA.

⑥ CUSTOMER SPECIAL -- "A" SUFFIX INDICATES
0.210/5.33 MATING LENGTH.

⑦ ADD "HLF" SUFFIX AT THE END OF PART NUMBER FOR
LEAD FREE OPTION, NOT AVAILABLE FOR -5YY, -5YYH,
-6YY & -6YYH.

⑧ PART NUMBERS WITH "H" SUFFIX WILL WITHSTAND
EXPOSURE TO 260°C PEAK TEMPERATURE FOR 20 SECONDS
IN WAVE SOLDER, INFRA-RED OR VAPOR PHASE SOLDER
PROCESS.

PART NUMBERS WITHOUT "H" SUFFIX WILL WITHSTAND
EXPOSURE TO 260°C PEAK TEMPERATURE FOR WAVE
SOLDER PROCESS.

⑨ THIS PRODUCT MEETS EUROPEAN UNION DIRECTIVES AND
OTHER COUNTRY REGULATION AS DESCRIBED IN GS-22-008.

⑩ PLATING OPTIONS:
PERFORMANCE PLATING WILL BE EITHER GOLD OR GXT ON CONTACT OR TAIL,
OPTIONALLY (78~295u"/2~7.5u) TIN ON TAIL.

⑪ "THIS PRODUCT HAS 100% TIN PLATING IN THE INTERFACE
AND HAS NOT BEEN TESTED FOR WHISKER GROWTH IN ALL
INTERCONNECT ENVIRONMENTS."

Mat'l. code NOTES 1 & 2		surface ISO 1302 ✓		tolerance ISO 1101		projection 		product family	
ltr	ecn no	dr	date	tolerances unless otherwise specified		inch/mm		title FRICTION LATCH HEADER DOUBLE ROW VERTICAL	
N				angles	linear				
						scale 1:1		dwg no 69168	
				dr	L.SADERS	5/3/95	Amphenol FCI		sheet 2 of 2
				enr	L.FYE	5/3/95			
				chr	T.BREWBAKER	5/3/95			
				appd	L.FYE	5/3/95	type Product Customer Drawing		size A3
sheet index	revision sheet								