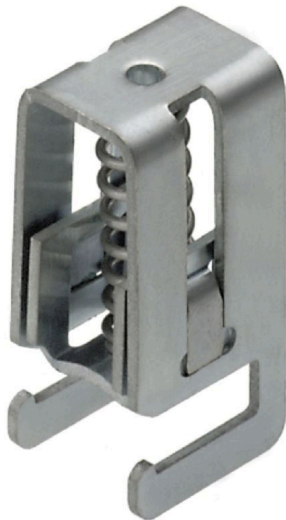


KLBUE CO 1**Weidmüller Interface GmbH & Co. KG**

Klingenbergstraße 26

D-32758 Detmold

Germany

www.weidmueller.com**Product image****Shielding and earthing**

Our protective earth conductor and shielding terminals featuring different connection technologies allow you to effectively protect both people and equipment from interference, such as electrical or magnetic fields. A comprehensive range of accessories rounds off our range.

General ordering data

Version	Clamping yoke, Clamping yoke, Steel
Order No.	1753311001
Type	KLBUE CO 1
GTIN (EAN)	4032248064427
Qty.	10 ST

KLBUE CO 1

Weidmüller Interface GmbH & Co. KG
 Klingenbergstraße 26
 D-32758 Detmold
 Germany

www.weidmueller.com

Technical data

Approvals

ROHS	Conform
------	---------

Dimensions and weights

Depth	32 mm	Depth (inches)	1.2598 inch
Height	18 mm	Height (inches)	0.7087 inch
Width	13.2 mm	Width (inches)	0.5197 inch
Mounting dimension - width	12 mm	Net weight	11.9 g

Temperatures

Storage temperature	-25 °C...55 °C	Ambient temperature	-5 °C...40 °C
Continuous operating temp., min.	-60 °C	Continuous operating temp., max.	130 °C

Environmental Product Compliance

RoHS Compliance Status	Compliant without exemption		
REACH SVHC	No SVHC above 0.1 wt%		
Product Carbon Footprint	Cradle to gate	0.061 kg CO2 eq.	

Material data

Material	Steel	Colour	silver
UL 94 flammability rating	None		

System specifications

Version	For a shield connection	End cover plate required	No
Rail	Busbar		

Additional technical data

Type of fixing	Snap-on	Installation advice	Direct mounting, Busbar
Explosion-tested version	No		

Conductors for clamping (rated connection)

Stripping length	18 mm	Type of connection	Spring connection
Cable diameter, max.	10 mm	Cable diameter, min.	3 mm
Connection cross-section, stranded, max.	10 mm ²	Connection cross-section, stranded, min.	3 mm ²

Dimensions

Pitch in mm (P)	18.00 mm
-----------------	----------

General

Installation advice	Direct mounting, Busbar	Rail	Busbar
---------------------	-------------------------	------	--------

Rating data

Rated cross-section	10 mm ²
---------------------	--------------------

Technical data

Classifications

ETIM 6.0	EC002020	ETIM 7.0	EC002020
ETIM 8.0	EC002020	ETIM 9.0	EC002020
ETIM 10.0	EC002020	ECLASS 9.0	27-14-11-50
ECLASS 9.1	27-14-11-50	ECLASS 10.0	27-14-11-50
ECLASS 11.0	27-14-11-50	ECLASS 12.0	27-14-11-50
ECLASS 13.0	27-25-01-20	ECLASS 14.0	27-25-01-20
ECLASS 15.0	27-25-01-20		