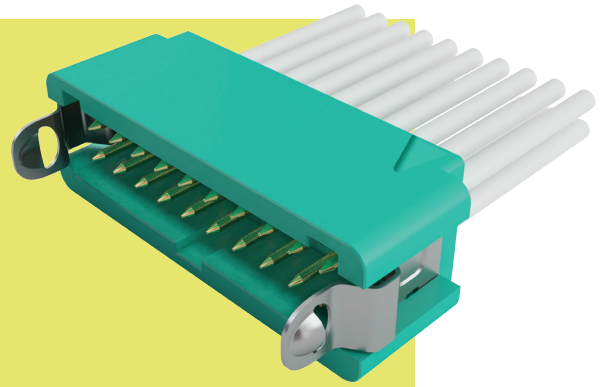


# Gecko Connectors

## Crimp Housings

- ❖ Features potting wall for extra security.
- ❖ No. 1 position identified on moulding.
- ❖ Withstands extremes of temperature: -65°C to +150°C.
- ❖ 3 polarising points on each housing prevent mis-mating.
- ❖ Easy to release latches require no tooling.



GECKO

FEMALE	CALCULATION		MALE	CALCULATION	
	<b>A</b>	$B + 3.8$		<b>A</b>	$B + 3.8$
	<b>B</b>	$0.625 \times (\text{Total No. of Contacts} - 2)$		<b>B</b>	$0.625 \times (\text{Total No. of Contacts} - 2)$
	<b>C</b>	$B + 1.8$		<b>C</b>	$B + 5.2$

--	--

## TOOLS

**Recommended Crimp Tool - Z125-900**  
**Positioner - Z125-901**

**Contact Insertion/Removal Tool - Z125-902**  
 See page 12

❖ Instruction sheets available at [www.harwin.com/instructions](http://www.harwin.com/instructions)

## HOW TO ORDER

<b>SERIES CODE</b>	<b>G125 - XXX XX 96 XX</b>	<b>LATCHES</b>
<b>TYPE</b>		<b>L0</b> No Latches
<b>204</b> Female Housing		<b>L4</b> Latches (Male Only)
<b>304</b> Male Housing		<b>FINISH</b>
		<b>96</b> Housing
		<b>TOTAL NO. OF CONTACTS</b>
		<b>06, 10, 12, 16, 20, 26, 34, 50</b> Housing

All dimensions in mm.

Patent Published