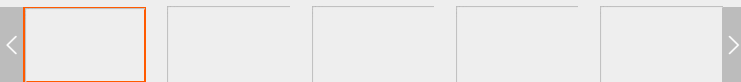
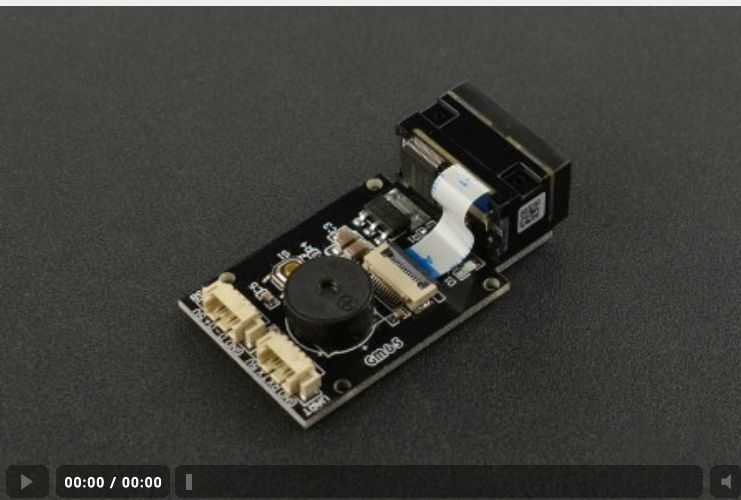


[Sensors](#) / [Light & Imaging Sensors](#) / GM65 QR & Barcode Scanner Module

GM65 QR & Barcode Scanner Module

SKU:DFR0660

Brand:Other

Reward Points: 499

Quantity Based

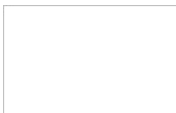
QTY	DISCOUNT
3-4	
5-9	
10+	

Quantity:

ADD TO CART

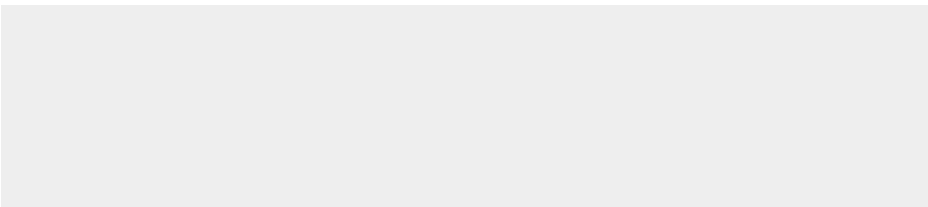


Frequently Bought Together




+

GM65 QR & Barcode Scanner Module



=



You have chosen:0
Total amount: 0

BUY IT NOW

INTRODUCTION

This GM65 code scanner module can accurately read the barcode or QR code on paper or screen at high speed (about 1s) even in the poorly-lit environment.

CM65 QR & Barcode Scanner Module

By using the intelligent image recognition algorithm, this module can easily decode all kinds of common 1D/2D codes. Through the onboard micro USB and UART interface, it can be directly plugged into a computer or integrated to various devices. The module is configurable via scanning 'configuration mode' so as to meet some strict scanning requirements. Besides that, with an onboard light source, this scanner can work well even in the dark and provide consistent scanning performance in the extreme temperature range.

CM65 QR & Barcode Scanner Module

This module can be easily embedded into multi-medium barcode scanning equipment, including self-service vending machine, subway gate machine, access control, payment machine, etc.

SPECIFICATION

- Optical System: CMOS
- Capture Light Source: 617nm LED
- Lighting Source: 6500K LED
- Scanning Angle: 34° (horizontal), 26° (vertical)
- Minimum Contrast: 30%
- Resolution: 648x488
- Voltage: DC 5V
- Ambient Light: 0~86000lux
- Interface: USB, UART
- 1D Codes Supported: Codebar, Code 11, Code 39/Code 93, UPC/EAN, Code 128/EAN128, Interleaved 2 of 5, Matrix 2 of 5, MSI Code, Industrial 2 of 5, GS1 Databar(RSS)
- 2D Codes Supported: QR code, Data Matrix, PDF417
- Light Source: white
- Operating Temperature: 0°C~50°C
- Storage Temperature: -40°C~70°C
- Operating Humidity: 10%~80%
- Scan Angles: roll 360°; pitch ±60°; skew ±65°
- Current: 120mA(scanning), 30mA(standby)

DOCUMENTS

- [Datasheet](#)

SHIPPING LIST

- GM65 QR & Barcode Scanner Module x1

REVIEW

FAQ

0 Comments
DFRobot
Disqus' Privacy Policy


1
Login

Recommend

Tweet


Share


Sort by Best




Join the discussion...

Be the first to comment.


Subscribe


Add Disqus to your site


Do Not Sell My Data

DISQUS

Sign up for exclusive offers!

Your email address

Like us on

INFORMATION

- About Us
- Warranty
- Privacy Policy
- Shipping
- Payment
- FAQ

CUSTOMER SERVICE

- DFRobot Distributors
- Contact us
- Site Map

MY ACCOUNT

- Affiliates
- Specials
- Coupon

Downloaded from [Arrow.com](#)