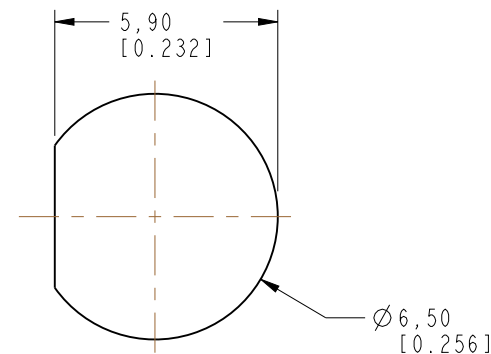


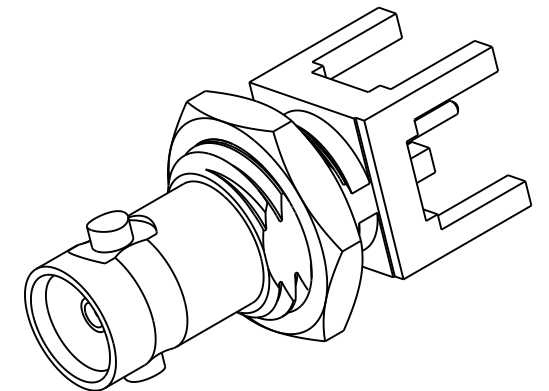
1. MATERIALS AND FINISHES:
BODY - BRASS, GOLD PLATING.
CONTACT - BeCu, GOLD PLATING.
INSULATOR - PTFE, NATURAL
NUT - BRASS, NICKEL PLATING
2. ELECTRICAL:
 - A. IMPEDANCE: 75 OHM
 - B. FREQUENCY RANGE: DC-18 GHz
 - C. RETURN LOSS (VSWR): -25dB (1.12) MAX DC-6 GHz
-20dB (1.22) MAX 6-12 GHz
 - D. DIELECTRIC WITHSTANDING VOLTAGE: 1000 VRMS, MIN.
3. MECHANICAL:
 - A. DURABILITY: 500 CYCLES MIN.
 - B. TEMPERATURE RANGE: -65° C TO +165° C
4. PACKAGING:
 - A. QUANTITY: SINGLE PACK
 - B. MARKING: BAG TO BE MARKED:
"AMPHENOL RF, 34-1028H-12G DATE CODE"

REVISIONS

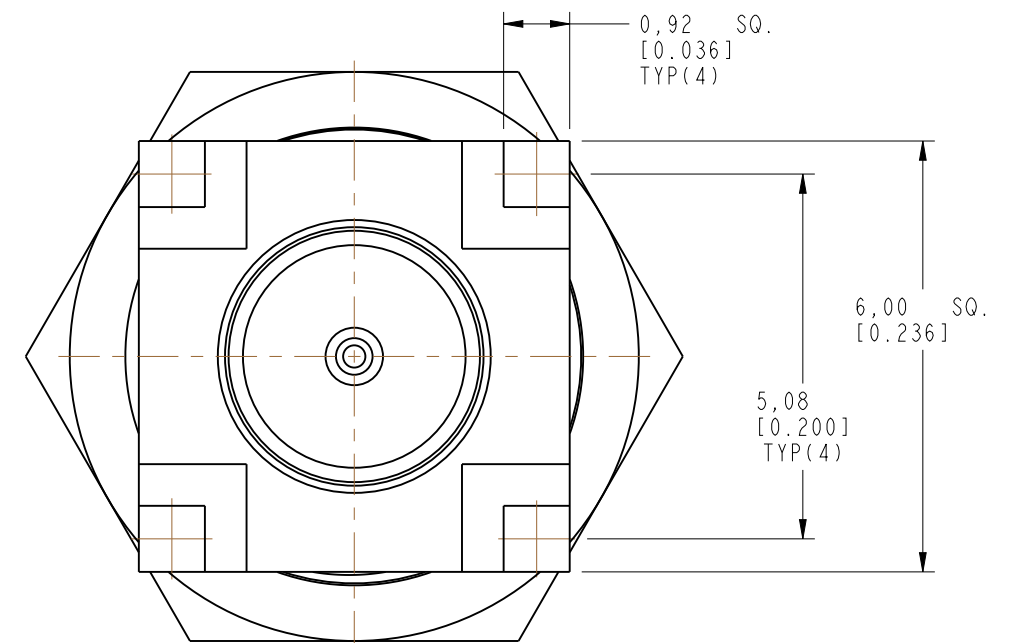
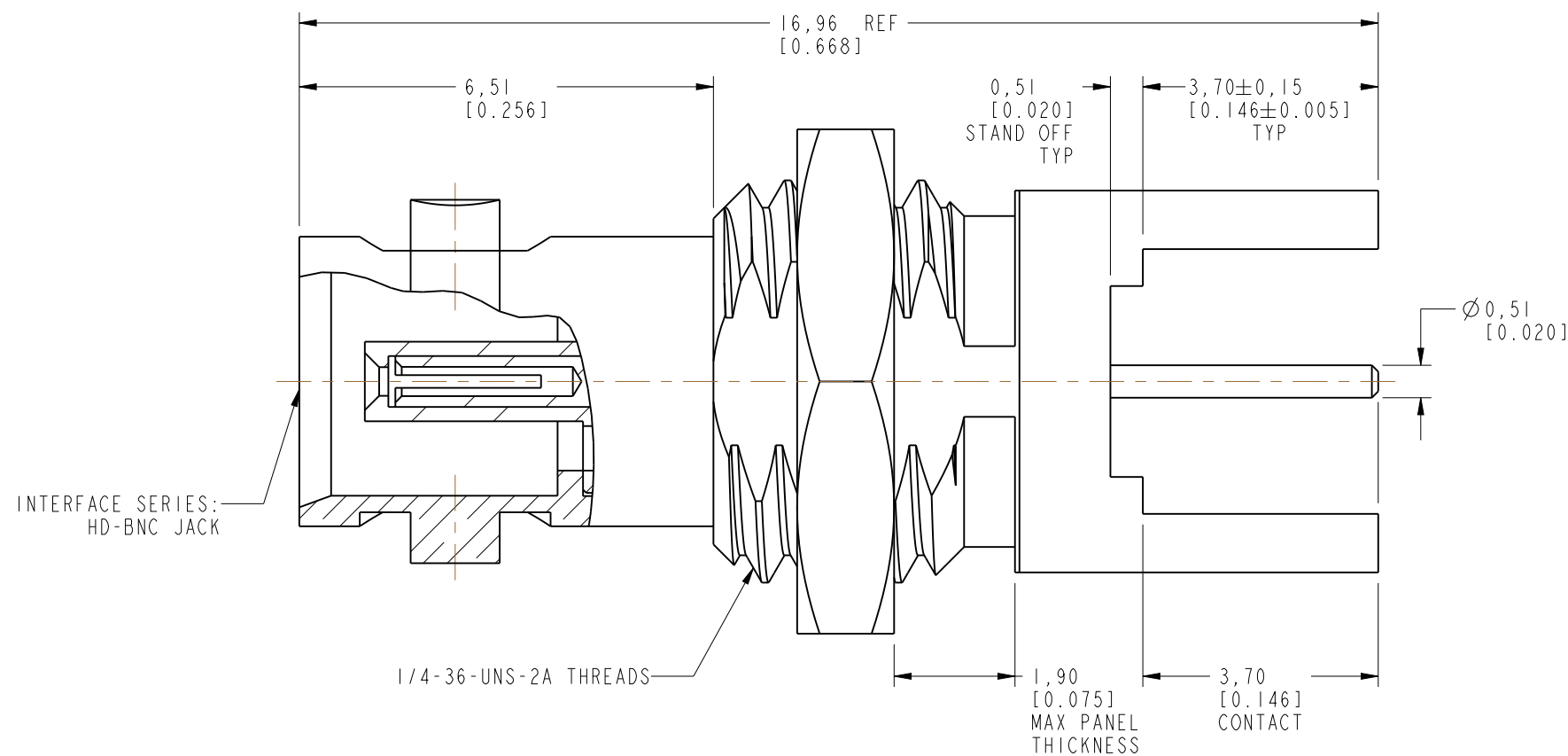
REV	DESCRIPTION	DATE	ECN	APPR
A	RELEASE TO MFG.	13-Mar-18	7181	BMG



SCALE 5.000
RECOMMENDED PANEL CUTOUT
DIMENSIONS



SCALE 4.000



CUSTOMER OUTLINE DRAWING

UNLESS OTHERWISE SPECIFIED, DIMENSIONS ARE IN METRIC AND TOLERANCES ARE: <0.5mm 0.5 - 6mm 6 - 30mm 30 - 120mm ANGLES ± 0.05mm ±0.1mm ±0.2mm ± 0.3mm ±1°		MATERIAL		DRAWN		DATE		TITLE		Amphenol RF	
NOTICE - These drawings, specifications, or other data (1) are, and remain the property of Amphenol corp. (2) must be returned upon request; and (3) are confidential and not to be disclosed to any person other than those to whom they are given by Amphenol Corp. the furnishing of these drawings, specifications, or other data by Amphenol Corp., or to any other person to anyone for any purpose is not to be regarded by implication or otherwise in any manner licensing, granting rights to permitting such holder or any other person to manufacture, use or sell any product, process or design, patented or otherwise, that may in any way be related to or disclosed by said drawings, specifications, or other data.		SEE NOTES		B. GREENBAUM		27-Nov-17					
		REFERENCE		ENGINEER		DATE					
				B. GREENBAUM		27-Nov-17					
		EAR# 8093		APPROVED		DATE					
		REF: 34-1018-12G		K. CAPOZZI		13-Mar-18					
CONFIGURATION LEVEL: In Work		CAD FILE		DWG SIZE		REV		DRAWING NO. 34-1028H-12G			
FINISH				B		A		ITEM NO. 34-1028H-12G			
								PART NO. 34-1028H-12G			

