



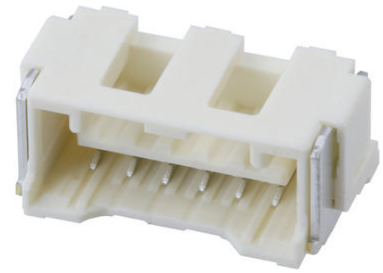
Part Number : [5025840670](#)

Product Description : 1.50mm Pitch, CLIK-Mate PCB Receptacle, Single Row, Surface Mount, Vertical, Tin Plating, Positive Lock, 6 Circuits, Beige

Series Number : 502584

Status : Active

Product Category : PCB Headers and Receptacles



Documents and Resources

Drawings

[5025840670_sd.pdf](#)

3D Models and Design Files

[STEP AP242](#)

[SOLIDWORKS](#)

[Creo](#)

[Symbol and Footprint \(Multi-Format\)](#)

[5025840670.dxf](#)

Specifications

[AS-502578-001-001.pdf](#)


[SPK-502584-001-001.pdf](#)

[5025780000-PS-000.pdf](#)

[5025781000-PS-000.pdf](#)

Product Environment Compliance

Compliance

GADSL/IMDS	Compliant with Exemption 44; 34; 33
China RoHS	 per SJ/T 11365-2006
EU ELV	Not Relevant
Low-Halogen Status	Not Low-Halogen per IEC 61249-2-21
REACH SVHC	Not Contained per D(2025)7771-

	DC (04 Feb 2026)
EU RoHS	Compliant per EU 2015/863

Compliance Statements

- EU RoHS
- REACH SVHC
- Low-Halogen

Industry Documents

- IPC 1752A Class C
- IPC 1752A Class D
- Molex Product Compliance Declaration
- IEC-62474
- chemSHERPA (xml)

Substances of Interest

- PFAS

EU RoHS Certificate of Compliance

Additional Product Compliance Information

Part Details

General

Status	Active
Category	PCB Headers and Receptacles
Series	502584
Description	1.50mm Pitch, CLIK-Mate PCB Receptacle, Single Row, Surface Mount, Vertical, Tin Plating, Positive Lock, 6 Circuits, Beige
Application	Wire-to-Board
Component Type	PCB Receptacle
Product Name	CLIK-Mate
UPC	800756644486

Agency

UL	E29179
----	--------

Electrical

Current - Maximum per Contact	2.0A
-------------------------------	------

Voltage - Maximum	100V
-------------------	------

Physical

Circuits (Loaded)	6
Circuits (maximum)	6
Color - Resin	Beige
Durability (mating cycles max)	30
First Mate / Last Break	No
Gender	Female
Glow-Wire Capable	No
Guide to Mating Part	No
Keying to Mating Part	No
Lock to Mating Part	Yes
Mated Height	9.70mm
Material - Metal	Copper Alloy
Material - Plating Mating	Tin
Material - Plating Termination	Tin
Net Weight	574.601/mg
Number of Rows	1
Orientation	Vertical
Packaging Type	Embossed Tape on Reel
PCB Locator	No
PCB Retention	Yes
Pitch - Mating Interface	1.50mm
Pitch - Termination Interface	1.50mm
Plating min - Mating	1.000µm
Plating min - Termination	1.000µm
Polarized to Mating Part	Yes
Polarized to PCB	No
Robotic Placement	Vacuum Pick-Up Area
Stackable	No
Temperature Range - Operating	-40° to +105°C
Termination Interface Style	Surface Mount

Mates With / Use With

Mates with Part(s)

Description	Part Number
1.50mm Pitch CLIK-Mate Single Row Plug Housings	<u>502578</u>
1.50mm Pitch CLIK-Mate-to-CLIK-Mate Off-the-Shelf (OTS) Cable Assemblies	<u>15135</u>

This document was generated on Jun 05, 2026