

# Data Sheet | Item Number: 280-490

Jumper; 10-way; insulated; gray

<https://www.wago.com/280-490>



Color: ■ gray

## Electrical data

### Ratings per IEC/EN

Rated current	24 A
---------------	------

## Physical data

Width	50 mm / 1.969 inches
Height	4 mm / 0.157 inches
Depth	19.2 mm / 0.756 inches
Jumper assignment	1-2-3-4-5-6-7-8-9-10

## Material data

Note (material data)	<a href="#">Information on material specifications can be found here</a>
Color	gray
Insulation material (main housing)	Polyamide (PA66)
Fire load	0.028 MJ
Weight	5 g

## Commercial data

PU (SPU)	50 (25) pcs
Packaging type	Box
Country of origin	DE
GTIN	4044918846097
Customs tariff number	85366990990



Product Classification	
UNSPSC	39121421
eCl@ss 10.0	27-14-11-40
eCl@ss 9.0	27-14-11-40
ETIM 9.0	EC000489
ETIM 10.0	EC000489
ECCN	NO US CLASSIFICATION

Environmental Product Compliance	
RoHS Compliance Status	Compliant, No Exemption

### Downloads

#### Environmental Product Compliance

Compliance Search	
Environmental Product Compliance 280-490	<a href="#">↓</a>

### Documentation

Bid Text			
280-490	27.04.2017	doc 24.00 KB	<a href="#">↓</a>
280-490	19.02.2019	xml 2.54 KB	<a href="#">↓</a>

### CAD/CAE-Data

CAD data	
2D/3D Models 280-490	<a href="#">↓</a>

CAE data	
EPLAN Data Portal 280-490	<a href="#">↓</a>
WSCAD Universe 280-490	<a href="#">↓</a>
ZUKEN Portal 280-490	<a href="#">↓</a>

## 1 Compatible Products

### 1.1 Optional Accessories

#### 1.1.1 Tool

##### 1.1.1.1 Operating tool

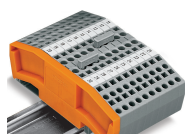


**Item No.: 280-440**

Operating tool; made of insulating material; 10-way; white

## Installation Notes

### Commoning



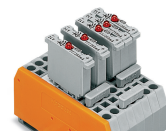
Commoning using comb-style jumper bars.  
Push comb-style jumper bars down until fully inserted.

### Commoning



4-conductor through terminal blocks, angled type, formation of groups with 3-way, comb-style jumper bars

### Commoning



Carrier terminal blocks with component plugs, alternate comb-style jumper bars, 3-way comb-style jumper bar

Commoning



Commoning front-entry disconnect terminal blocks via comb-style jumper bar using a 10-pole operating tool