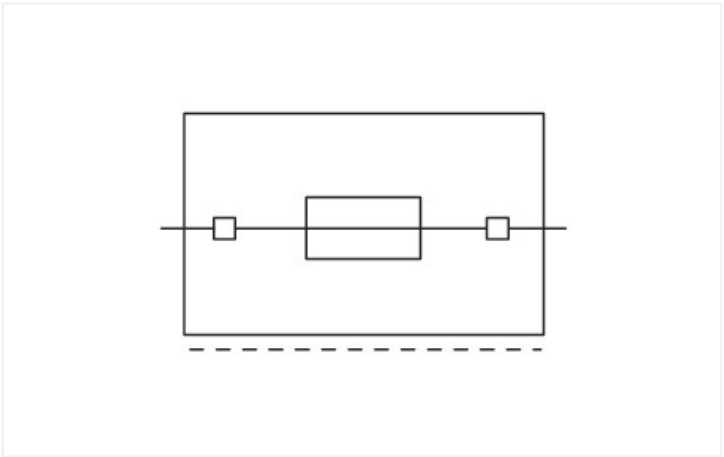
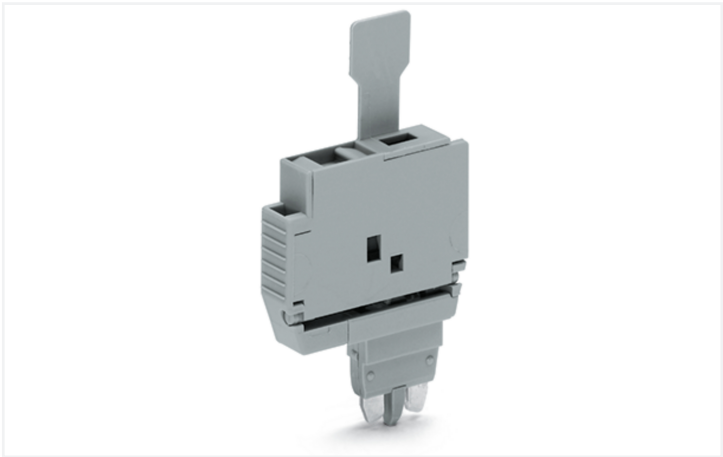


Data Sheet | Item Number: 2004-911

Fuse plug; with pull-tab; for miniature metric fuses 5 x 20 mm and 5 x 25 mm; without blown fuse indication; 6.1 mm wide; gray

<https://www.wago.com/2004-911>



Color: ■ gray

Fuse plug, 2004 Series, gray

This fuse plug (item number 2004-911) simplifies electrical installations. The gray housing is made of polyamide (PA66) for insulation.

Electrical data			
Ratings per IEC/EN		Ratings per IEC/EN – Notes	
Nominal voltage (III/3)	250 V	Ratings (note)	Electrical ratings are given by the fuse.
Rated current	6.3 A		
Operation status indicator	None		
Blown fuse indication	without blown fuse indication		
Power Loss		General information	
Power loss (max.) $P_{I(max)}$ (note)	When selecting glass cartridge fuses, make sure that the maximum power loss listed below is not exceeded. The power loss is determined according to IEC or EN 60947-7-3/VDE 0611-6 at 23°C. The temperature rise of the terminal block must be checked according to their application and mounting. Higher ambient temperatures represent an additional impact on miniature fuses. Therefore, in such applications, the rated current must be reduced if necessary. More details are available from the manufacturers.	Fuse type	Cylindrical fuse; 5 x 20 mm and 5 x 25 mm
Physical data			
Width	6.1 mm / 0.24 inches		



Mechanical data																																																								
Marking level		Center marking																																																						
Material data																																																								
Note (material data)		Information on material specifications can be found here																																																						
Color	gray																																																							
Material group	I																																																							
Insulation material (main housing)	Polyamide (PA66)																																																							
Flammability class per UL94	V0																																																							
Fire load	0.066 MJ																																																							
Weight	4 g																																																							
Environmental requirements																																																								
Processing temperature	-35 ... +85 °C	<table><tr><th colspan="2">Environmental Testing (Environmental Conditions)</th></tr><tr><td>Test specification Railway applications – Rolling stock – Electronic equipment</td><td>DIN EN 50155 (VDE 0115-200):2022-06</td></tr><tr><td>Test procedure Railway applications – Rolling stock equipment – Shock and vibration tests</td><td>DIN EN 61373 (VDE 0115-0106):2011-04</td></tr><tr><td>Spectrum/Installation location</td><td>Service life test, Category 1, Class A/B</td></tr><tr><td>Function test with noise-like vibration</td><td>Test passed according to Section 8 of the standard</td></tr><tr><td>Frequency</td><td>f₁ = 5 Hz to f₂ = 150 Hz</td></tr><tr><td>Acceleration</td><td>0.101g (highest test level used for all axes)</td></tr><tr><td>Test duration per axis</td><td>10 min.</td></tr><tr><td>Test directions</td><td>X, Y and Z axes</td></tr><tr><td>Monitoring for contact faults/interruptions</td><td>Passed</td></tr><tr><td>Voltage drop measurement before and after each axis</td><td>Passed</td></tr><tr><td>Simulated service life test through increased levels of noise-like vibration</td><td>Test passed according to Section 9 of the standard</td></tr><tr><td>Frequency</td><td>f₁ = 5 Hz to f₂ = 150 Hz</td></tr><tr><td>Acceleration</td><td>0.572g (highest test level used for all axes)</td></tr><tr><td>Test duration per axis</td><td>5 h</td></tr><tr><td>Test directions</td><td>X, Y and Z axes</td></tr><tr><td>Extended test scope: Monitoring for contact faults/interruptions</td><td>Passed</td></tr><tr><td>Extended test scope: Voltage drop measurement before and after each axis</td><td>Passed</td></tr><tr><td>Shock test</td><td>Test passed according to Section 10 of the standard</td></tr><tr><td>Shock form</td><td>Half sine</td></tr><tr><td>Acceleration</td><td>5g (highest test level used for all axes)</td></tr><tr><td>Shock duration</td><td>30 ms</td></tr><tr><td>Number of shocks per axis</td><td>3 pos. und 3 neg.</td></tr><tr><td>Test directions</td><td>X, Y and Z axes</td></tr><tr><td>Extended test scope: Monitoring for contact faults/interruptions</td><td>Passed</td></tr><tr><td>Extended test scope: Voltage drop measurement before and after each axis</td><td>Passed</td></tr><tr><td>Vibration and shock stress for rolling stock equipment</td><td>Passed</td></tr></table>	Environmental Testing (Environmental Conditions)		Test specification Railway applications – Rolling stock – Electronic equipment	DIN EN 50155 (VDE 0115-200):2022-06	Test procedure Railway applications – Rolling stock equipment – Shock and vibration tests	DIN EN 61373 (VDE 0115-0106):2011-04	Spectrum/Installation location	Service life test, Category 1, Class A/B	Function test with noise-like vibration	Test passed according to Section 8 of the standard	Frequency	f ₁ = 5 Hz to f ₂ = 150 Hz	Acceleration	0.101g (highest test level used for all axes)	Test duration per axis	10 min.	Test directions	X, Y and Z axes	Monitoring for contact faults/interruptions	Passed	Voltage drop measurement before and after each axis	Passed	Simulated service life test through increased levels of noise-like vibration	Test passed according to Section 9 of the standard	Frequency	f ₁ = 5 Hz to f ₂ = 150 Hz	Acceleration	0.572g (highest test level used for all axes)	Test duration per axis	5 h	Test directions	X, Y and Z axes	Extended test scope: Monitoring for contact faults/interruptions	Passed	Extended test scope: Voltage drop measurement before and after each axis	Passed	Shock test	Test passed according to Section 10 of the standard	Shock form	Half sine	Acceleration	5g (highest test level used for all axes)	Shock duration	30 ms	Number of shocks per axis	3 pos. und 3 neg.	Test directions	X, Y and Z axes	Extended test scope: Monitoring for contact faults/interruptions	Passed	Extended test scope: Voltage drop measurement before and after each axis	Passed	Vibration and shock stress for rolling stock equipment	Passed
Environmental Testing (Environmental Conditions)																																																								
Test specification Railway applications – Rolling stock – Electronic equipment	DIN EN 50155 (VDE 0115-200):2022-06																																																							
Test procedure Railway applications – Rolling stock equipment – Shock and vibration tests	DIN EN 61373 (VDE 0115-0106):2011-04																																																							
Spectrum/Installation location	Service life test, Category 1, Class A/B																																																							
Function test with noise-like vibration	Test passed according to Section 8 of the standard																																																							
Frequency	f ₁ = 5 Hz to f ₂ = 150 Hz																																																							
Acceleration	0.101g (highest test level used for all axes)																																																							
Test duration per axis	10 min.																																																							
Test directions	X, Y and Z axes																																																							
Monitoring for contact faults/interruptions	Passed																																																							
Voltage drop measurement before and after each axis	Passed																																																							
Simulated service life test through increased levels of noise-like vibration	Test passed according to Section 9 of the standard																																																							
Frequency	f ₁ = 5 Hz to f ₂ = 150 Hz																																																							
Acceleration	0.572g (highest test level used for all axes)																																																							
Test duration per axis	5 h																																																							
Test directions	X, Y and Z axes																																																							
Extended test scope: Monitoring for contact faults/interruptions	Passed																																																							
Extended test scope: Voltage drop measurement before and after each axis	Passed																																																							
Shock test	Test passed according to Section 10 of the standard																																																							
Shock form	Half sine																																																							
Acceleration	5g (highest test level used for all axes)																																																							
Shock duration	30 ms																																																							
Number of shocks per axis	3 pos. und 3 neg.																																																							
Test directions	X, Y and Z axes																																																							
Extended test scope: Monitoring for contact faults/interruptions	Passed																																																							
Extended test scope: Voltage drop measurement before and after each axis	Passed																																																							
Vibration and shock stress for rolling stock equipment	Passed																																																							
Continuous operating temperature	-60 ... +105 °C																																																							



Commercial data	
Product Group	22 (TOPJOB S)
PU (SPU)	50 pcs
Packaging type	Box
Country of origin	CN
GTIN	4055143043991
Customs tariff number	85366990990

Product classification	
UNSPSC	39121624
eCl@ss 10.0	27-14-11-49
eCl@ss 9.0	27-14-11-49
ETIM 9.0	EC002018
ETIM 8.0	EC002018
ECCN	NO US CLASSIFICATION

Environmental Product Compliance	
RoHS Compliance Status	Compliant,No Exemption

Approvals / Certificates

General approvals			Declarations of conformity and manufacturer's declarations		
Approval	Standard	Certificate Name	Approval	Standard	Certificate Name
CCA DEKRA Certification B.V.	EN 60947	NTR NL-8054	Railway WAGO GmbH & Co. KG	-	Railway Ready
CSA CSA Group	-	154112			
CSA DEKRA Certification B.V.	C22.2	70173745			
KEMA/KEUR DEKRA Certification B.V.	EN 60947	71-124163			
UL Underwriters Laboratories Inc.	UL 1059	E45172			

Approvals for marine applications

Approval	Standard	Certificate Name
LR Lloyds Register	EN 60947	LR23325966TA



Downloads

Environmental Product Compliance

Compliance Search			
Environmental Product Compliance 2004-911			

Documentation

Bid Text			
2004-911	19.02.2019	xml 2.83 KB	
2004-911	07.08.2018	docx 13.67 KB	

CAD/CAE-Data

CAD data	
2D/3D Models 2004-911	

CAE data	
WSCAD Universe 2004-911	
ZUKEN Portal 2004-911	

1 Compatible Products

1.1 Optional Accessories

1.1.1 Jumper

1.1.1.1 Jumper



Item No.: 281-503 Short circuit jumper; for fuse holder; silver-colored

1.1.2 Marking

1.1.2.1 Marker



Item No.: 793-5501/000-006 WMB marking card; as card; for terminal block width 5 - 17.5 mm; stretchable 5 - 5.2 mm; plain; snap-on type; blue



Item No.: 793-5501/000-007 WMB marking card; as card; for terminal block width 5 - 17.5 mm; stretchable 5 - 5.2 mm; plain; snap-on type; gray



Item No.: 793-5501/000-023 WMB marking card; as card; for terminal block width 5 - 17.5 mm; stretchable 5 - 5.2 mm; plain; snap-on type; green
--



Item No.: 793-5501/000-017 WMB marking card; as card; for terminal block width 5 - 17.5 mm; stretchable 5 - 5.2 mm; plain; snap-on type; light green
--



Item No.: 793-5501/000-012 WMB marking card; as card; for terminal block width 5 - 17.5 mm; stretchable 5 - 5.2 mm; plain; snap-on type; orange



Item No.: 793-5501/000-005 WMB marking card; as card; for terminal block width 5 - 17.5 mm; stretchable 5 - 5.2 mm; plain; snap-on type; red
--



Item No.: 793-5501/000-024 WMB marking card; as card; for terminal block width 5 - 17.5 mm; stretchable 5 - 5.2 mm; plain; snap-on type; violet



Item No.: 793-5501 WMB marking card; as card; for terminal block width 5 - 17.5 mm; stretchable 5 - 5.2 mm; plain; snap-on type; white
--



1.1.2.1 Marker



Item No.: 793-5501/000-002
WMB marking card; as card; for terminal block width 5 - 17.5 mm; stretchable 5 - 5.2 mm; plain; snap-on type; yellow



Item No.: 794-5615
WMB marking card; as card; MARKED; F1, ..., F10 (10x); stretchable 5 - 5.2 mm; Vertical marking; snap-on type; white



Item No.: 794-5616
WMB marking card; as card; MARKED; F11, ..., F20 (10x); stretchable 5 - 5.2 mm; Vertical marking; snap-on type; white



Item No.: 794-5617
WMB marking card; as card; MARKED; F21, ..., F30 (10x); stretchable 5 - 5.2 mm; Vertical marking; snap-on type; white



Item No.: 794-5618
WMB marking card; as card; MARKED; F31, ..., F40 (10x); stretchable 5 - 5.2 mm; Vertical marking; snap-on type; white



Item No.: 794-5619
WMB marking card; as card; MARKED; F41, ..., F50 (10x); stretchable 5 - 5.2 mm; Vertical marking; snap-on type; white



Item No.: 793-501/000-006
WMB marking card; as card; not stretchable; plain; snap-on type; blue



Item No.: 793-501/000-007
WMB marking card; as card; not stretchable; plain; snap-on type; gray



Item No.: 793-501/000-023
WMB marking card; as card; not stretchable; plain; snap-on type; green



Item No.: 793-501/000-017
WMB marking card; as card; not stretchable; plain; snap-on type; light green



Item No.: 793-501/000-012
WMB marking card; as card; not stretchable; plain; snap-on type; orange



Item No.: 793-501/000-005
WMB marking card; as card; not stretchable; plain; snap-on type; red



Item No.: 793-501/000-024
WMB marking card; as card; not stretchable; plain; snap-on type; violet



Item No.: 793-501
WMB marking card; as card; not stretchable; plain; snap-on type; white



Item No.: 793-501/000-002
WMB marking card; as card; not stretchable; plain; snap-on type; yellow



Item No.: 2009-115/000-006
WMB-Inline; for Smart Printer; 1500 pieces on roll; stretchable 5 - 5.2 mm; plain; snap-on type; blue



Item No.: 2009-115/000-007
WMB-Inline; for Smart Printer; 1500 pieces on roll; stretchable 5 - 5.2 mm; plain; snap-on type; gray



Item No.: 2009-115/000-023
WMB-Inline; for Smart Printer; 1500 pieces on roll; stretchable 5 - 5.2 mm; plain; snap-on type; green



Item No.: 2009-115/000-017
WMB-Inline; for Smart Printer; 1500 pieces on roll; stretchable 5 - 5.2 mm; plain; snap-on type; light green



Item No.: 2009-115/000-012
WMB-Inline; for Smart Printer; 1500 pieces on roll; stretchable 5 - 5.2 mm; plain; snap-on type; orange



Item No.: 2009-115/000-024
WMB-Inline; for Smart Printer; 1500 pieces on roll; stretchable 5 - 5.2 mm; plain; snap-on type; violet



Item No.: 2009-115
WMB-Inline; for Smart Printer; 1500 pieces on roll; stretchable 5 - 5.2 mm; plain; snap-on type; white



Item No.: 2009-115/000-002
WMB-Inline; for Smart Printer; 1500 pieces on roll; stretchable 5 - 5.2 mm; plain; snap-on type; yellow

1.1.2.2 Marking strip



Item No.: 2009-110
Marking strips; for Smart Printer; on reel; not stretchable; plain; snap-on type; white

1.1.3 Screwless end stop

1.1.3.1 Mounting accessories



Item No.: 249-117
Screwless end stop; 10 mm wide; for DIN-rail 35 x 15 and 35 x 7.5; gray



Item No.: 249-116
Screwless end stop; 6 mm wide; for DIN-rail 35 x 15 and 35 x 7.5; gray



1.1.4 Terminal blocks

1.1.4.1 Carrier terminal block



Item No.: 2002-2961
Double-deck carrier terminal block; L/L; for DIN-rail 35 x 15 and 35 x 7.5; 2.5 mm²; Push-in CAGE CLAMP®; 2,50 mm²; gray



Item No.: 2002-2963
Double-deck carrier terminal block; L/N; for DIN-rail 35 x 15 and 35 x 7.5; 2.5 mm²; Push-in CAGE CLAMP®; 2,50 mm²; gray



Item No.: 2002-2941
Double-deck, double-disconnect terminal block; L/L; for DIN-rail 35 x 15 and 35 x 7.5; 2.5 mm²; Push-in CAGE CLAMP®; 2,50 mm²; gray

1.1.4.2 Carrier terminal block for modules and plugs



Item No.: 2002-1661
2-conductor carrier terminal block; for DIN-rail 35 x 15 and 35 x 7.5; 2.5 mm²; Push-in CAGE CLAMP®; 2,50 mm²; gray



Item No.: 2002-1662
2-conductor carrier terminal block; for DIN-rail 35 x 15 and 35 x 7.5; 2.5 mm²; Push-in CAGE CLAMP®; 2,50 mm²; orange



Item No.: 2002-1961
2-conductor carrier terminal block; with additional jumper position; for DIN-rail 35 x 15 and 35 x 7.5; 2.5 mm²; Push-in CAGE CLAMP®; 2,50 mm²; gray



Item No.: 2202-1661
2-conductor carrier terminal block; with push-button; for DIN-rail 35 x 15 and 35 x 7.5; 2.5 mm²; Push-in CAGE CLAMP®; 2,50 mm²; gray



Item No.: 2202-1961
2-conductor carrier terminal block; with push-button; with additional jumper position; for DIN-rail 35 x 15 and 35 x 7.5; 2.5 mm²; Push-in CAGE CLAMP®; 2,50 mm²; gray



Item No.: 2002-1761
3-conductor carrier terminal block; for DIN-rail 35 x 15 and 35 x 7.5; 2.5 mm²; Push-in CAGE CLAMP®; 2,50 mm²; gray



Item No.: 2202-1761
3-conductor carrier terminal block; with push-button; for DIN-rail 35 x 15 and 35 x 7.5; 2.5 mm²; Push-in CAGE CLAMP®; 2,50 mm²; gray



Item No.: 2002-1861
4-conductor carrier terminal block; for DIN-rail 35 x 15 and 35 x 7.5; 2.5 mm²; Push-in CAGE CLAMP®; 2,50 mm²; gray



Item No.: 2202-1861
4-conductor carrier terminal block; with push-button; for DIN-rail 35 x 15 and 35 x 7.5; 2.5 mm²; Push-in CAGE CLAMP®; 2,50 mm²; gray



Item No.: 2002-2941
Double-deck, double-disconnect terminal block; L/L; for DIN-rail 35 x 15 and 35 x 7.5; 2.5 mm²; Push-in CAGE CLAMP®; 2,50 mm²; gray

1.1.4.3 Double-deck terminal block



Item No.: 2002-2961
Double-deck carrier terminal block; L/L; for DIN-rail 35 x 15 and 35 x 7.5; 2.5 mm²; Push-in CAGE CLAMP®; 2,50 mm²; gray



Item No.: 2002-2963
Double-deck carrier terminal block; L/N; for DIN-rail 35 x 15 and 35 x 7.5; 2.5 mm²; Push-in CAGE CLAMP®; 2,50 mm²; gray



Item No.: 2002-2941
Double-deck, double-disconnect terminal block; L/L; for DIN-rail 35 x 15 and 35 x 7.5; 2.5 mm²; Push-in CAGE CLAMP®; 2,50 mm²; gray

1.1.4.4 Multilevel installation terminal block



Item No.: 2003-6662
Multilevel installation terminal block; with operating slots; 2.5 mm²; Carrier terminal block without knife; L/L/PE; Push-in CAGE CLAMP®; 2,50 mm²; gray



Item No.: 2003-6661
Multilevel installation terminal block; with operating slots; 2.5 mm²; Carrier terminal block without knife; L/N/PE; Push-in CAGE CLAMP®; 2,50 mm²; gray



Item No.: 2003-6640
Multilevel installation terminal block; with operating slots; 2.5 mm²; Carrier terminal block without knife; N/L/PE; Push-in CAGE CLAMP®; 2,50 mm²; gray

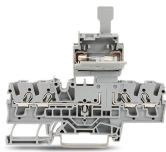


Item No.: 2003-6660
Multilevel installation terminal block; with operating slots; 2.5 mm²; Carrier terminal block without knife; P1/P2/PE; Push-in CAGE CLAMP®; 2,50 mm²; gray



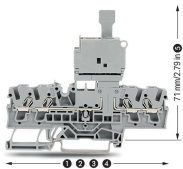
Item No.: 2003-6643
Multilevel installation terminal block; with operating slots; 2.5 mm²; Carrier terminal block without knife; P2/P1/PE; Push-in CAGE CLAMP®; 2,50 mm²; gray

Installation Notes

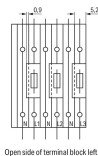


Using fuse plugs with rail-mount terminal blocks for control circuit protection is highly advantageous because the function and wiring levels are separated:

- No additional cost for assembly and wiring
 - No risk of accidental contact with live parts when disconnecting the fuse plug
 - The fuse plug is completely separated from the carrier terminal block when replacing a fuse – away from current carrying parts
 - The fuse plug can be removed by service personnel
 - No unintentional reclosing of the circuit by another person
 - Quickly exchange a fuse by using a prepared “stand-by plug”
- Fuse plug features for quick and safe applications:
- Optional LED indicates blown fuse.
 - Top-of-unit marking slot provides clear carrier terminal block identification.
 - Two test slots with touch contacts
 - Terminal blocks/plugs provide high-density wiring in a width of just 5.2/6.1 mm.
 - May be used as a disconnect plug in combination with a shorting link.



Fuse plug dimensions:
66.1 mm / 2.62 inch for 2002-1661
76.8 mm / 3.02 inch for 2002-1761
87.5 mm / 3.45 inch for 2002-1861
72.9 mm / 2.87 inch for 2002-1961
with inserted fuse plug



Please note:
The extra width of the plug (6.1 mm compared to 5.2 mm for carrier terminal blocks) must be compensated for with intermediate plates (1 mm) when building an assembly of carrier terminal blocks equipped with fuse plugs.

Subject to changes. Please also observe the further product documentation!

Current addresses can be found at: www.wago.com