



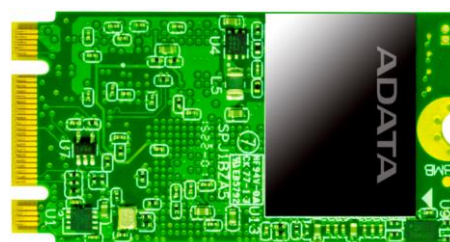
ADATA Industrial & Embedded Solutions

M.2 SSD

The super-compact IM2S3134N M.2 2242 solid state drive is optimized for industrial and commercial applications, designed for extreme temperatures, and employ a robust controller. With S.M.A.R.T., TRIM Command, and NCQ technologies, the IM2S3134N maintains data integrity and improves overall storage and system performance. For sheer SSD quality, ADATA A+ Testing Methodology delivers superior functionality and reliability. IM2S3134N SSDs undergo the strictest quality controls to provide industrial systems with the best choice for reliability and rugged performance.

Key Features

- Ultra-compact M.2 2242 form factor
- High-speed MLC NAND Flash
- S.M.A.R.T. feature supported
- Supports DEVSLP for power efficiency
- Supports NCQ and TRIM Command



Target Applications

Server, Data Center, Surveillance, Transportation, Notebooks, Desktops

30μ Golden Finger	Anti-Sulfur Resistor	Conformal Coating	Wide Temperature	EDS & EMI Safe	Shock & Vibration Resistant	Lifetime Monitoring (LTM)	Wear Leveling	Secure Erase	TRIM	Low Power Consumption
●	—	—	—	●	●	●	●	●	●	●

● Supported

Specifications

Model	IM2S3134N
Interface	SATA III 6.0Gbps
Form Factor	M.2 2242
Dimensions (L x W x H)	42 x 22 x 3.5mm
Flash Type	MLC
Capacity	32GB – 256GB
Sequential Read (Max.)	550MB/s
Sequential Write (Max.)	320MB/s
Operating Temperature (Commercial)	0°C to 70°C
Operating Voltage	3.3V
Operating Humidity	5%-95% RH non-condensing
Power Consumption (Max.)	2.64W
MTBF (Est.)	>1,500,000 hours
Shock Resistance	1500G/0.5ms, Half Sine Wave
Vibration Resistance	20G (10-2000Hz)
Technologies	DEVSLP, Wear Leveling, H/W Power Detector and Flash Management

Ordering Information

Capacity	Commercial (0°C to 70°C)
32GB	IM2S3134N-032GM
64GB	IM2S3134N-064GM
128GB	IM2S3134N-128GM
256GB	IM2S3134N-256GM



Dimensions

