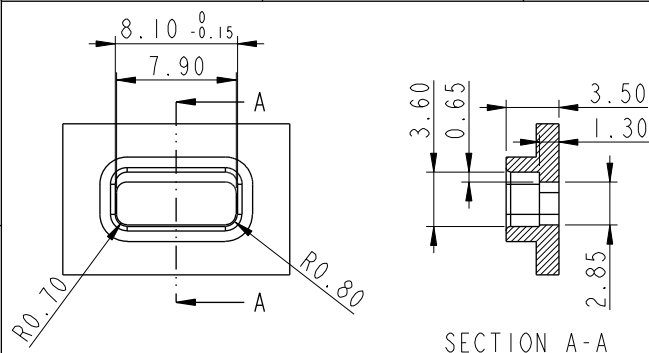
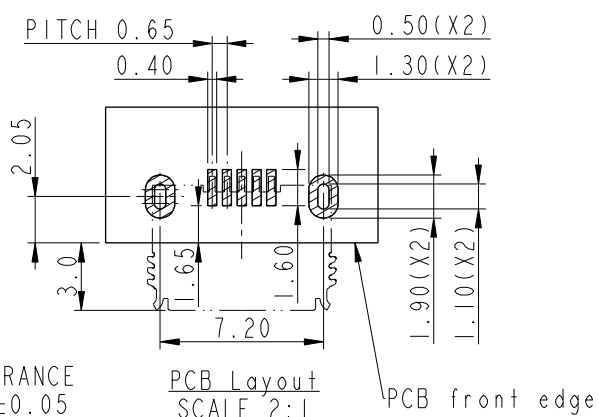
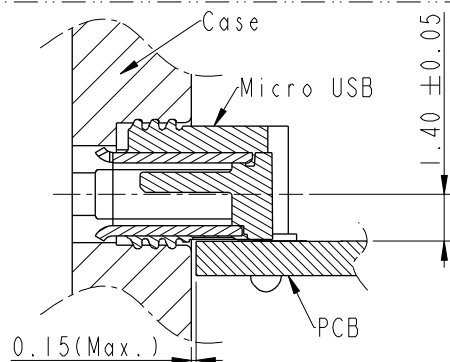




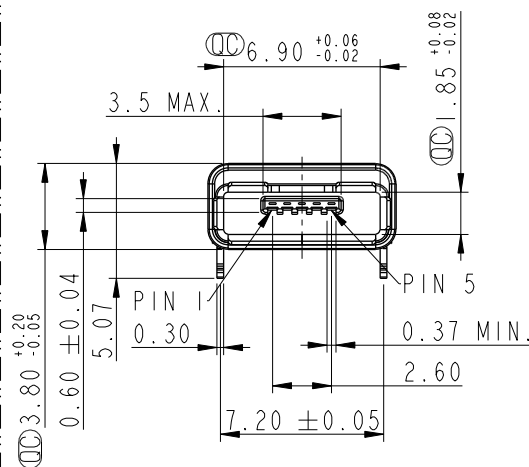
REV.	ECN NO.	DATE	SIGN	DESCRIPTION
A	Initial Release	2016/07/25	Jason Yu	New Item
B	LEN1681212~5	2016/08/18	Jason Yu	Add Dimension
C	LEN1790259~62	2017/09/15	Ruru	RoHS Label and blue and white label merger



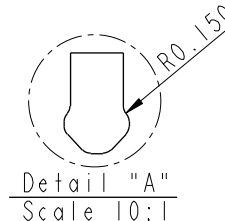
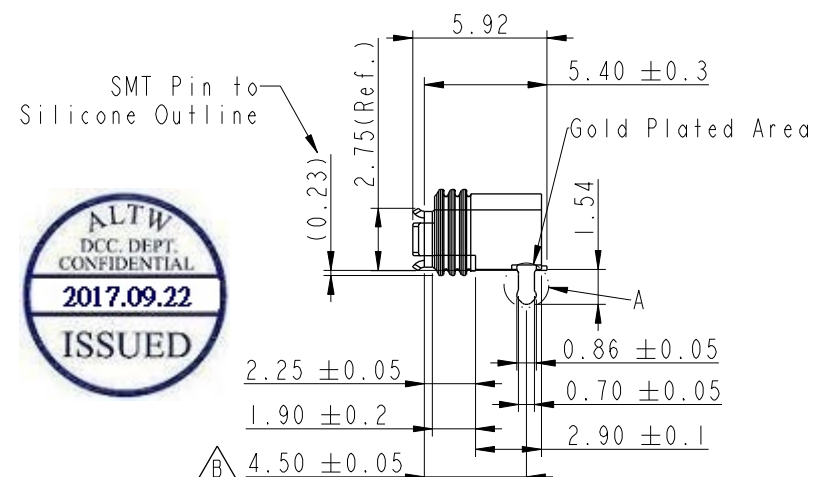
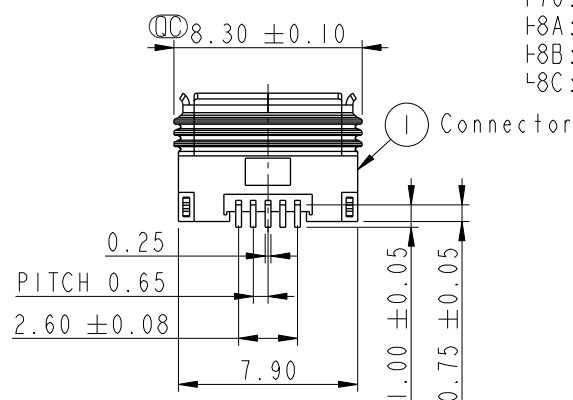
TOLERANCE Recommended Case Cut Out  
.XX±0.05 SCALE 2:1



TOLERANCE .XX±0.05  
PCB Layout SCALE 2:1  
PCB front edge



MUC-20PFFR-JSXX02



Note:

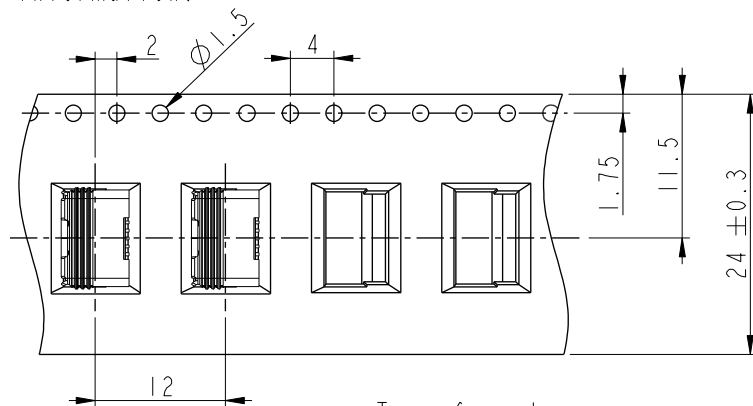
- \* Ⓞ Important Dimensions To Check
- \* Current: 1&5pin(1.8A), 2~4 pin(1.0A)
- \* Housing: Nylon, Black
- \* Terminal: Copper Alloy, Gold Plated
- \* Shell: Stainless, Gold Plated
- \* Inner Gasket: Silicone, Transparent
- \* Outside Gasket: Silicone, Transparent
- \* PCB Thickness: 1.2 MAX.
- \* For Micro USB A & B type plug use
- \* SMD Temperature & Time: 260°C / 5 sec

UNIT:mm		TITLE WATERPROOF MICRO-AB USB PANEL 20MAB F CONN JACK LENGHT PIN			
TOLERANCE .X ±0.25 .XX ±0.1 .XXX ±0.05 ANGLES ±1°		SCALE 3:1	SIZE A4	SHEET 1 OF 4	
		REV. C	WC-REV. A.6	Ⓞ Inspection item	

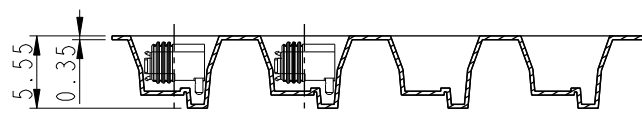
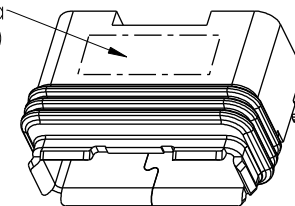
**Amphenol LTW**  
安費諾亮泰企業股份有限公司

ITEM NO	DRAWN BY Ruru	DATE 2017-09-15
DWG NO MUC-20PFFR-JSXX02	CHECKED BY Rita	DATE 2017-09-15
CUSTOMER ALTW	APPROVED BY Max	DATE 2017-09-15

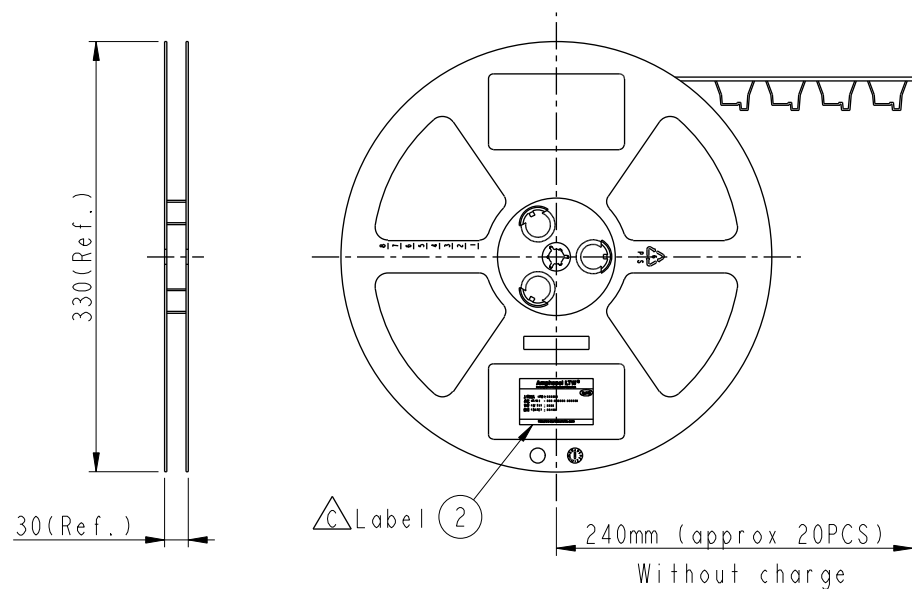
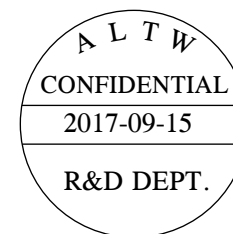
## Tape &amp; Reel Information:



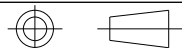
Top of reel

SMT Nozzle Area  
(6.0x2.0mm)Wide cover tape around  
out periphery 1 turnPeeling strenght 0.1~1.3N Max.  
(300±10mm/min)  
Peeling angle  
165~180°

Top of reel

1000 PCS/Reel  
With product charge(approx 20PCS)  
240mm  
Without charge

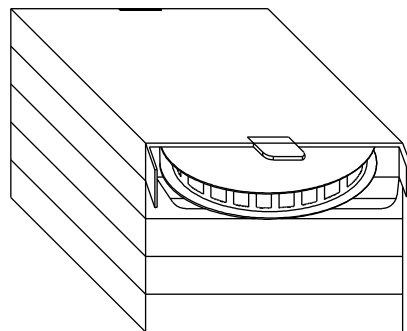
UNIT:mm

TOLERANCE  
.X ±0.25  
.XX ±0.1  
.XXX ±0.05  
ANGLES ±1°TITLE  
WATERPROOF MICRO-AB USB  
PANEL 20MAB F CONN JACK LENGHT PINSCALE Free SIZE A4 SHEET 2 OF 4  
REV. C WC-REV. A.6 QC: Inspection itemAmphenol LTW  
安費諾亮泰企業股份有限公司

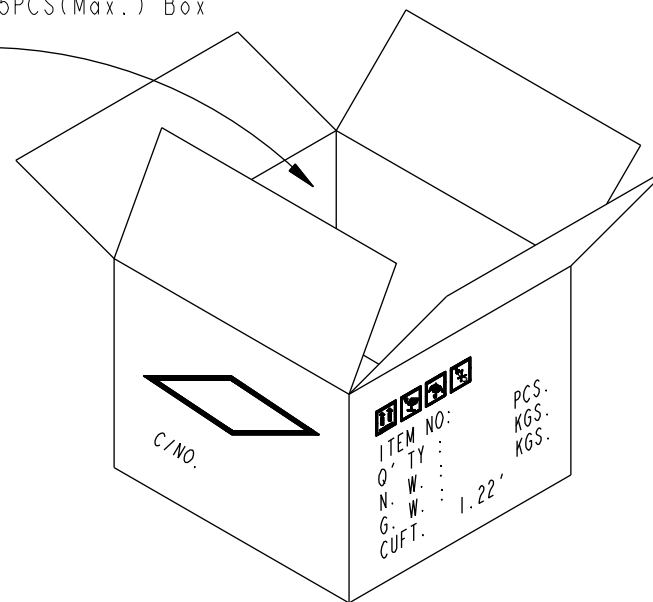
ITEM NO	DWG NO	CUSTOMER	DRAWN BY	CHECKED BY	APPROVED BY	DATE
	MUC-20PFFR-JSXX02	ALTW	Ruru	Rita	Max	2017-09-15
						2017-09-15
						2017-09-15

Package :

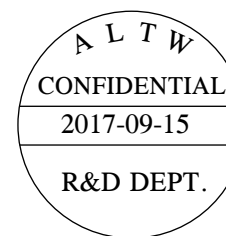
One Carton can put in the 5PCS(Max.) Box



1000 PCS(Connector)/Tape&Reel, Put in a Box



(5,000 PCS/Carton)

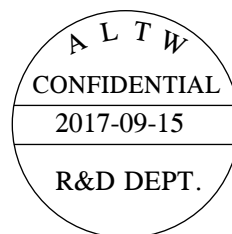


UNIT:mm		TITLE		ITEM NO		DRAWN BY		DATE	
TOLERANCE		WATERPROOF MICRO-AB USB		DWG NO		Ruru		2017-09-15	
.X		PANEL 20MAB F CONN JACK LENGHT PIN		MUC-20PFFR-JSXX02		CHECKED BY		DATE	
.XX		SCALE Free		CUSTOMER		Rita		2017-09-15	
.XXX		SIZE A4		ALTW		APPROVED BY		DATE	
ANGLES		SHEET 3 OF 4				Max		2017-09-15	
		REV. C							
		WC-REV. A.3							
		QC:Inspection item							

**Amphenol LTW**  
安費諾亮泰企業股份有限公司

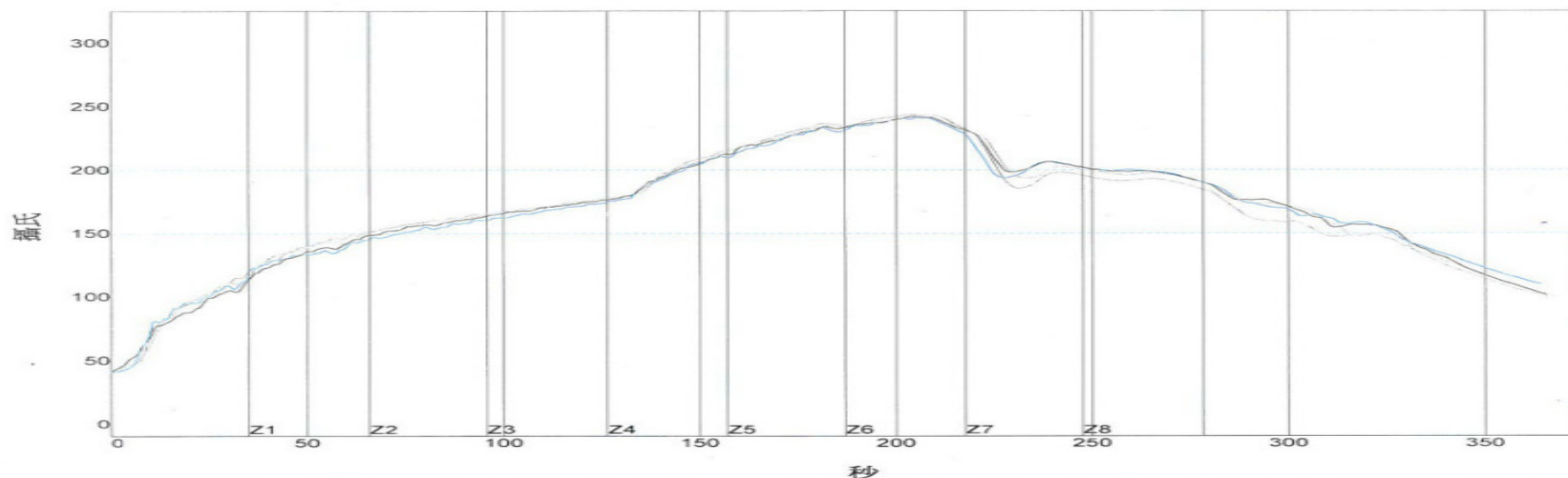
THIS DOCUMENT IS SUBJECT TO CHANGE WITHOUT NOTICE. IT IS CONFIDENTIAL AND A PROPERTY OF Amphenol LTW. DISCLOSURE TO THIRD PARTY HAS TO BE AUTHORIZED BY Amphenol LTW.

For SMT Process Recommend:



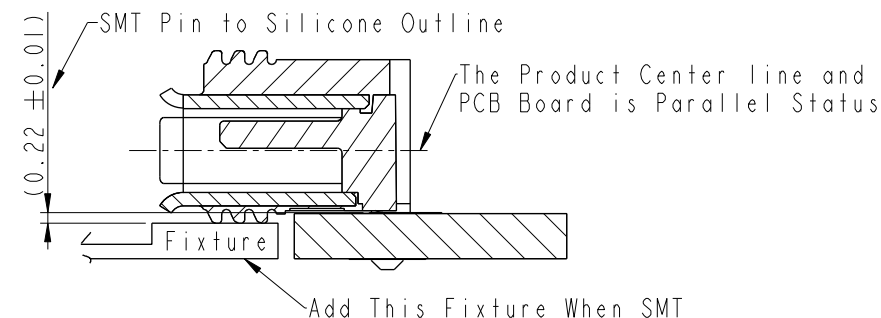
About IR Reflow Profile:

溫度設置 (攝氏)								
溫區	1	2	3	4	5	6	7	8
上溫區	160	180	180	180	190	245	265	260
下溫區	160	180	180	180	190	245	265	260
傳送帶速度 (米/分):	0.95							

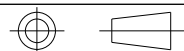


PWI= 61%	最高上升斜率		最高下降斜率		恢復時間150至200C		回流時間 /220C		最高溫度
CON1	2.81	-6%	-2.33	33%	80.21	-33%	60.91	-30%	242.36
CON2	2.38	-21%	-2.14	43%	75.61	-48%	57.41	-42%	241.74
CON3	2.81	-6%	-2.84	8%	77.79	-41%	58.66	-38%	243.44
CON4	2.83	-6%	-2.34	33%	72.24	-59%	51.64	-61%	240.92
溫差	0.45		0.70		7.97		9.27		2.52

About Fixture:



UNIT:mm



TOLERANCE  
 .X ±0.25  
 .XX ±0.1  
 .XXX ±0.05  
 ANGLES ±1°

TITLE  
 WATERPROOF MICRO-AB USB  
 PANEL 20MAB F CONN JACK LENGHT PIN

SCALE Free SIZE A4 SHEET 4 OF 4  
 REV. C WC-REV. A.3 QC: Inspection item

**Amphenol LTW**  
 安費諾亮泰企業股份有限公司

ITEM NO	DRAWN BY Ruru	DATE 2017-09-15
DWG NO MUC-20PFFR-JSXX02	CHECKED BY Rita	DATE 2017-09-15
CUSTOMER ALTW	APPROVED BY Max	DATE 2017-09-15

THIS DOCUMENT IS SUBJECT TO CHANGE WITHOUT NOTICE. IT IS CONFIDENTIAL AND A PROPERTY OF Amphenol LTW. DISCLOSURE TO THIRD PARTY HAS TO BE AUTHORIZED BY Amphenol LTW.