
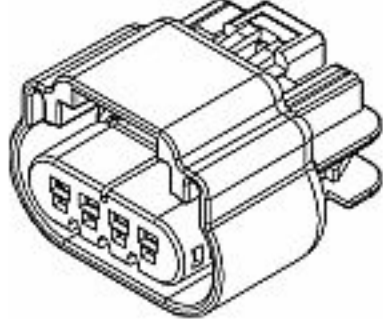


SEARCH KEYWORD, PART NUMBER 




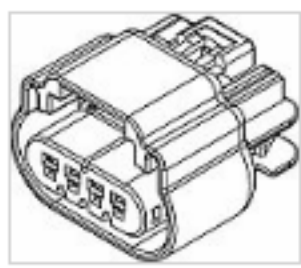
Part Number: 15466325

Product Name: [GT 150 Series](#)

4 Way F GT 150 Sealed

 [Share](#)  [Print](#) [Contact Us About This Item](#)

GET SAMPLES 

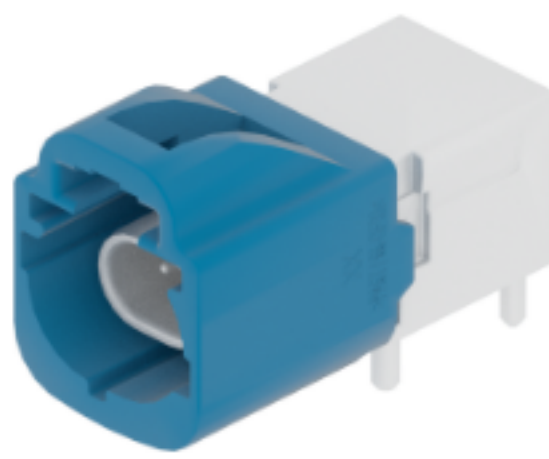
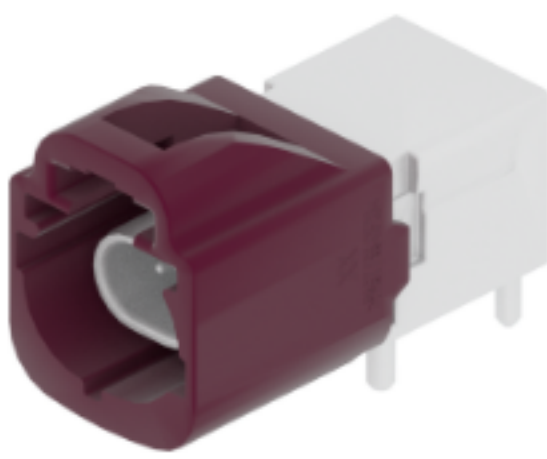
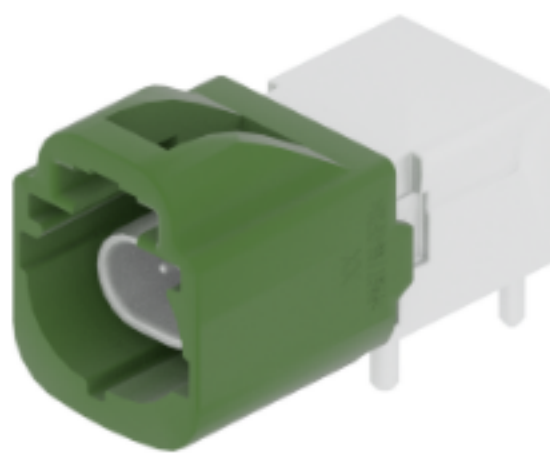


ATTRIBUTES DOCUMENTS ECAD COMPATIBLE PARTS

## Attributes

Product Family GT	Height (mm) 23.13
Product Series 150 Series	Color BLACK
Max. operating temperature +125°C	Primary Locking Mechanism LOCKING LANCE
Min. operating temperature -40°C	Weight (g) 9.72515
No. of Ways 4	Terminal 1 Size 1.5
Cable Exit Orientation 180°	Sealing Sealed
Gender Female	Primary Material PBT GF 20
Length (mm) 28.6	Coding/Index 101
Width (mm) 32.66	

## Other Products



**RESOURCE-CENTER-ITEM**  
COV CONN CLIP CDT BLACK

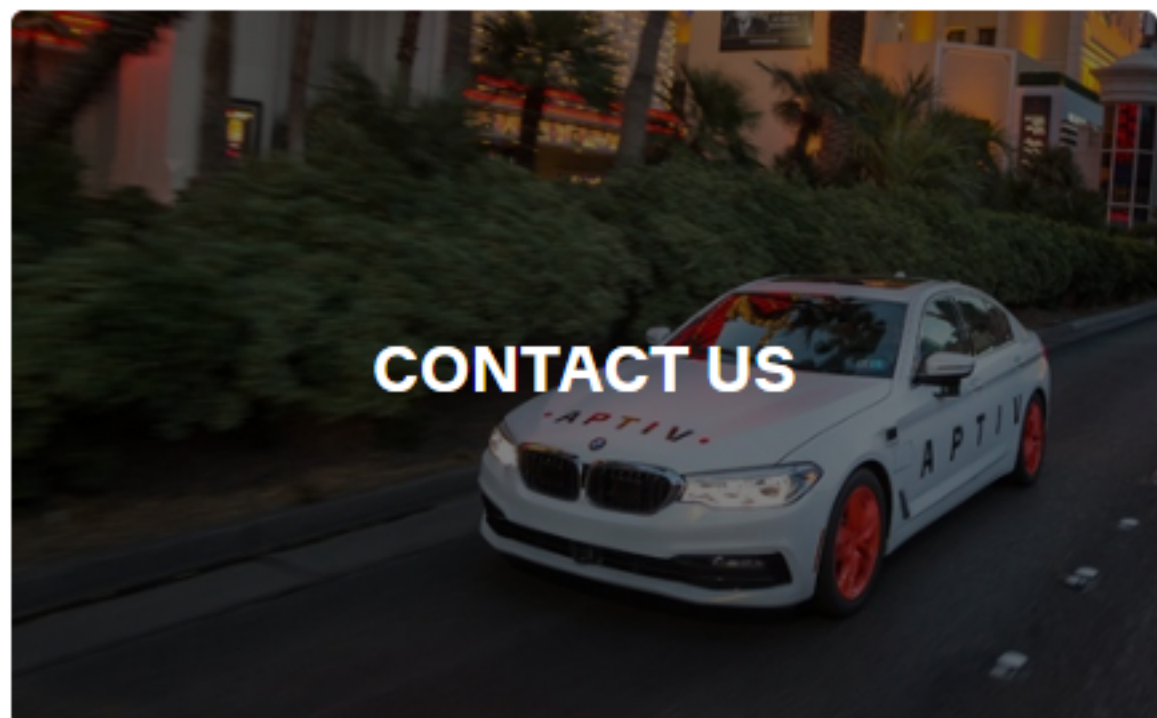
**35829171**  
2 Way Male 0.5 Unsealed Green

**35829170**  
2 Way Male 0.5 Unsealed Violet

**35829169**  
2 Way Male 0.5 Unsealed Blue



## Next Steps



Keep pace with where mobility is going.

See what's next and get the latest updates.

SIGN UP TO GET UPDATES 

Don't worry. We won't flood your inbox or share your email.

### INSIGHTS

EXPLORE ALL ARTICLES  
CASE STUDIES  
MOBILITY INSIDER  
RESEARCH PUBLICATIONS  
WHITE PAPERS

### SOLUTIONS

Advanced Safety  
Connected Services  
Connection Systems  
Connectivity and Security  
Electrical Distribution Systems  
Middleware & DevOps  
Smart Vehicle Architecture  
User Experience  
Vehicle Electrification Systems  
HellermannTyton  
Intercable Automotive  
Solutions  
Motional  
Winchester Interconnect  
Wind River

### CATALOG

### ABOUT

Our Mission  
Our Businesses  
Our Locations  
Our Foundation  
Sustainability  
Suppliers

### PRIVACY

Terms of Use  
Cookie Policy

### LEGAL & COMPLIANCE

### CAREERS

INVESTORS  
NEWSROOM  
CONTACT