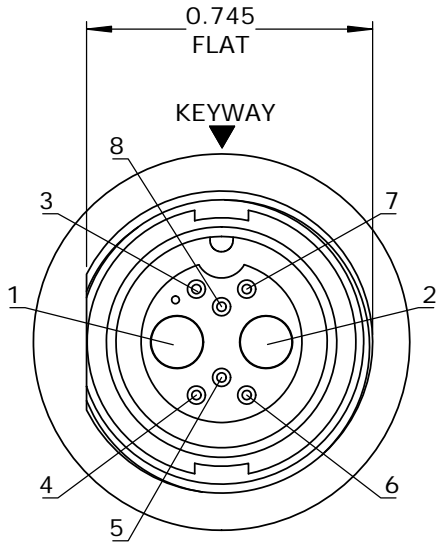
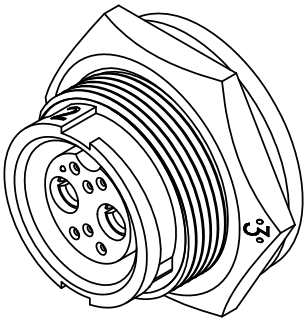
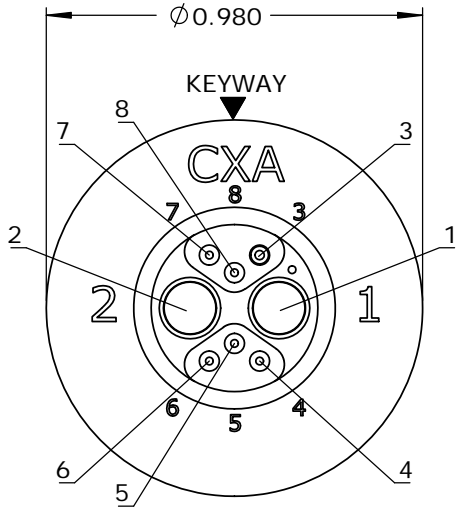
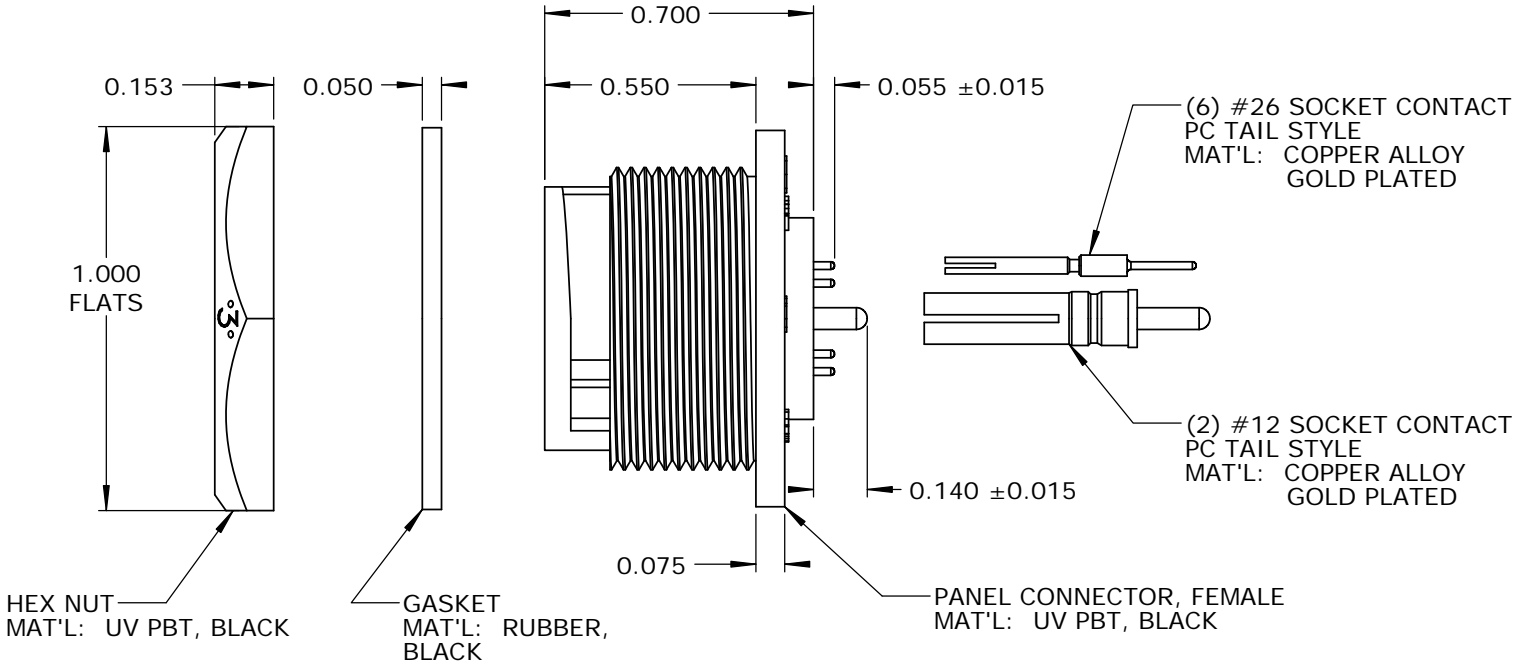


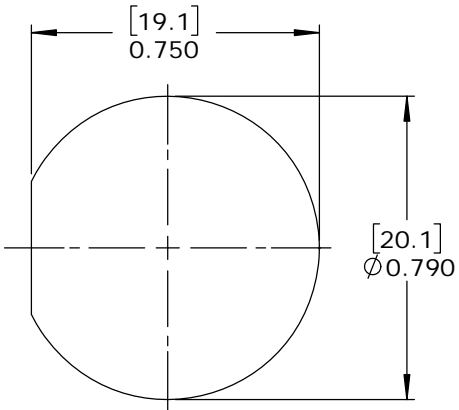
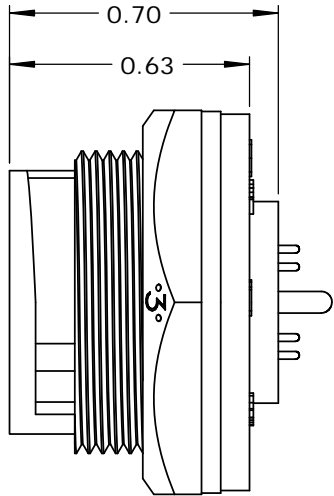
- NOTES:
- 1. PARTS TO BE BULK PACKED.
 - 2. PC TAIL CONTACTS ARE PRESSED INTO CONNECTOR.
 - 3. ALL DIMENSIONS ARE FOR REFERENCE ONLY EXCEPT WHERE NOTED WITH TOLERANCE.



FACE VIEW



WIRE VIEW



RECOMMENDED PANEL CUT-OUT
TOLERANCE ±.003 [0.08]

CUSTOMER APPROVAL	
THIS DOCUMENT CONTAINS CONFIDENTIAL INFORMATION PROPRIETARY TO CONXALL CORPORATION. ANY REPRODUCTION, DISCLOSURE, OR USE OF THIS DOCUMENT /INFORMATION IS EXPRESSLY PROHIBITED UNLESS AUTHORIZED IN WRITING BY CONXALL CORPORATION.	
APPROVED BY:	_____
DATE:	_____

RoHS COMPLIANT

A	AB	05-09-19	RELEASE PER DOR 14-6281TC
REV.	INIT.	DATE	DESCRIPTION
ALL INFORMATION ILLUSTRATED IS THE PROPERTY OF "CONXALL CORPORATION." UNAUTHORIZED DUPLICATION OR DISTRIBUTION OF THIS DOCUMENT IS PROHIBITED.		ORIG. DRAWN BY: AB	DATE: 07-18-14
		CHECKED BY:	
ALL UNITS ARE IN FEET, INCHES, FRACTION OF INCHES AND DECIMALS.		APPROVED BY:	
		SCALE: NTS	SIZE: B
- CRITICAL CHARACTERISTIC FLAG PER SPEC. XXXX		SHEET: 1 OF 1	
		FILE: SAME AS P/N	DIRECTORY: SLW
		PART NUMBER: W4B81-8SG-300	REV A



TITLE: PANEL CONNECTOR KIT
(2)#12 + (6)#26 SOCKET CONTACTS, PC TAIL
MULTI-CON-X, WEATHER RESISTANT
STANDARD PRODUCT