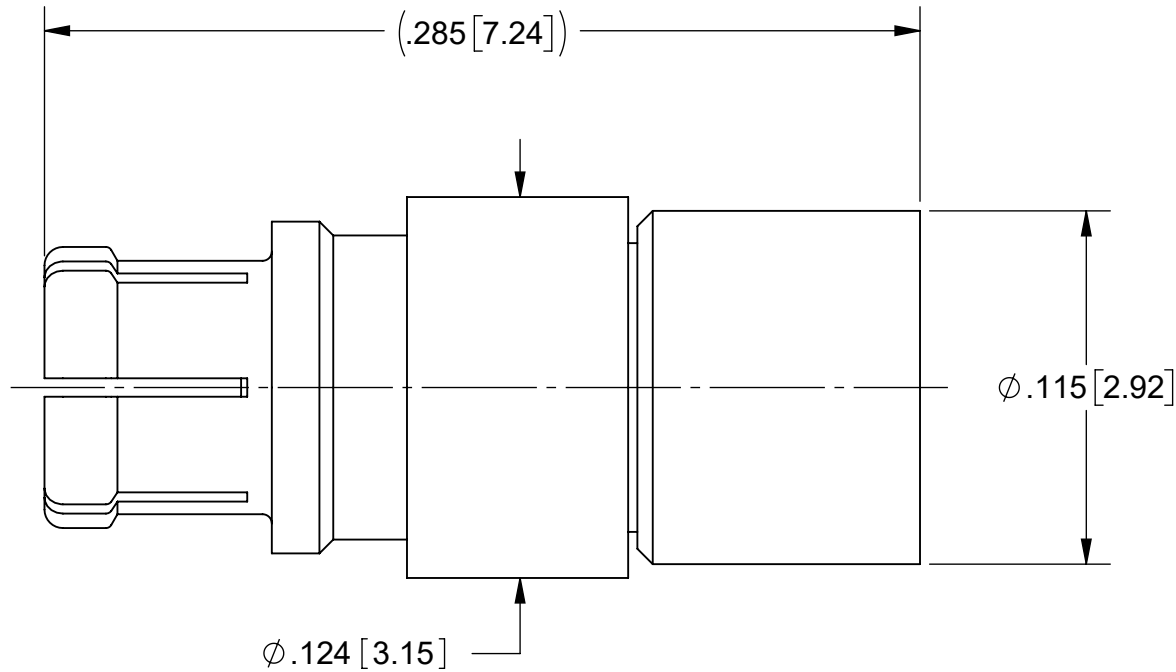
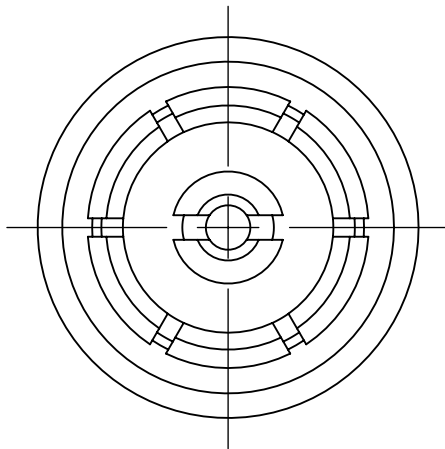


# PRODUCT DATA DRAWING

REVISION HISTORY			
REV	DESCRIPTION	DATE	APPROVED
-	NRN 44864	05/20	SEE PDM
A	DCN 52177	02/23	



**MATERIAL:**

BODY, FERRULE, & CONTACT: BERYLLIUM COPPER

INSULATOR: PTFE

**FINISH:**


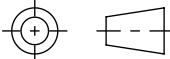
BODY, CONTACT & FERRULE: GOLD OVER COPPER

**PERFORMANCE:**

IMPEDANCE: 50 OHMS

FREQ. RANGE: DC TO 40.0 GHz.

MAGNETIC FIELD STRENGTH: <.1 mG

MATERIAL:	SEE NOTES	DIMENSIONS ARE IN INCHES TOLERANCES: FRACTIONAL: ±1/64 ANGULAR: X° ±1°0' X'X' ±15'	UNLESS OTHERWISE SPECIFIED 1) ALL DIMENSIONS ARE IN INCHES (MILLIMETERS) 2) ALL DIMENSIONS ARE AFTER PLATING. 3) BREAK CORNERS & EDGES .005 R. MAX. 4) CHAM. 1ST & LAST THREADS. 5) SURFACE ROUGHNESS 63-MIL-STD-10. 6) DIA.'S ON COMMON CENTERS TO BE CONCENTRIC WITHIN .005 T.I.R. 7) REMOVE ALL BURRS	 Amphenol www.svmicrowave.com
FINISH:	SEE NOTES	DECIMAL: X ±.030 .XX ±.010 .XXX ±.005	INTERPRET DIMENSIONS AND TOLERANCES PER ASME Y14.5M - 1994	TITLE: <b>SMPM JACK (NON-MAGNETIC) FOR .085 CABLE</b>
SURFACE AREA:	N/A	<b>THIRD ANGLE PROJECTION</b>		SIZE DWG. NO. <b>B 3221-40132</b>
PROPRIETARY THE INFORMATION CONTAINED IN THIS DRAWING IS THE SOLE PROPERTY OF SV MICROWAVE, INC. ANY REPRODUCTION IN PART OR AS A WHOLE WITHOUT THE WRITTEN PERMISSION OF SV MICROWAVE, INC IS PROHIBITED.			DRAWN: SJ 05/27/20 CHECKED: SEE PDM APPROVED: SEE PDM	SCALE: 16:1 SHEET 1 OF 1