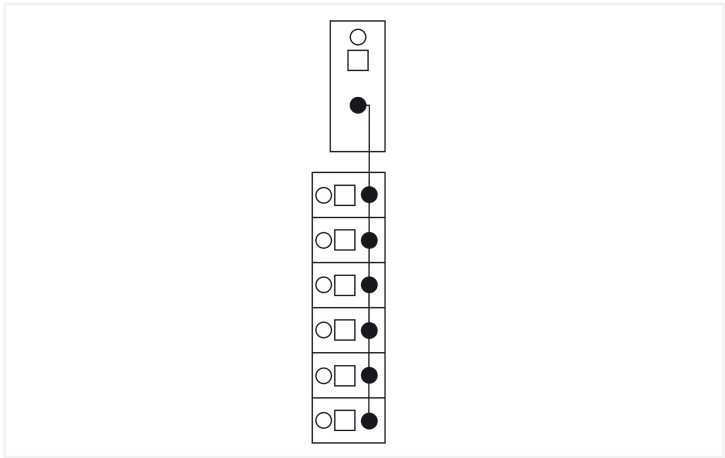
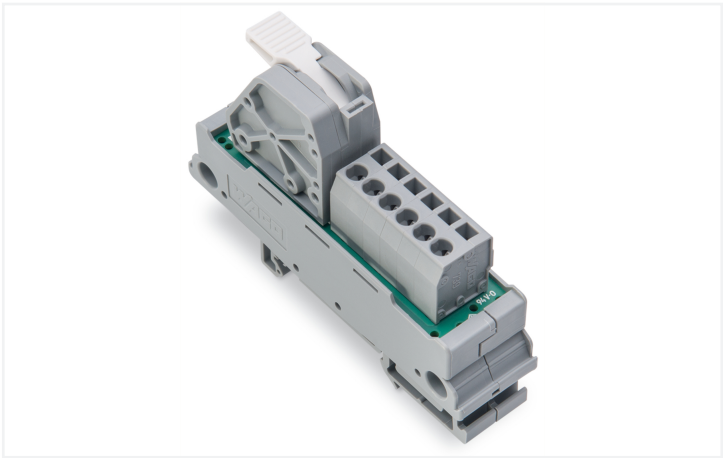


Data Sheet | Item Number: 830-800/000-312

Potential distribution module; 1 potential; with 1 input clamping point; Conductor cross-section up to 16 mm²; with lever; with 6 output clamping points; Conductor cross-section up to 2.5 mm²; gray

<https://www.wago.com/830-800/000-312>



Color: ■ gray

Electrical data	
Operating voltage	≤ 250 VAC/VDC
Current per connection (max.)	12 A
Total current per potential (max.)	65 A
Specialty functions	with 1 input clamping point; with 6 output clamping points

Connection data	
Total number of potentials	1
Note (conductor cross-section)	12 AWG: THHN, THWN
Connection 1	
Connection type	Input
Mating direction	30°
Actuation type	Lever
Connection technology	CAGE CLAMP®
WAGO connector	WAGO 2716 Series
Solid conductor	1.5 ... 16 mm² / 16 ... 6 AWG
Fine-stranded conductor	1.5 ... 16 mm² / 16 ... 6 AWG
Strip length	12 ... 13 mm / 0.47 ... 0.51 inches

Connection 2	
Connection type	Output
Mating direction 2	45°
Connection technology	CAGE CLAMP®
WAGO connector	WAGO 739 Series
Solid conductor	0.08 ... 2.5 mm² / 28 ... 12 AWG
Fine-stranded conductor	0.08 ... 2.5 mm² / 28 ... 12 AWG
Strip length	8 ... 9 mm / 0.31 ... 0.35 inches



Physical data		
Width		21 mm / 0.81 inches
Height		85 mm / 3.35 inches
Depth from upper-edge of DIN-rail		49 mm / 1.929 inches
Mechanical data		
Mounting type		DIN-35 rail
Housing design		Mounting carrier
Material data		
Color		gray
Fire load		1.123 MJ
Weight		57.8 g
Environmental requirements		
Ambient temperature (operation)		-20 ... +50 °C
Relative humidity		≤ 95 % (without condensation)
Standards and specifications		
Standards/specifications		cULus 61010-2-201
Commercial data		
PU (SPU)		10 (1) pcs
Packaging type		Box
Country of origin		US
GTIN		4055143379366
Customs tariff number		85369010000
Product classification		
UNSPSC		39121410
eCl@ss 10.0		27-14-11-52
eCl@ss 9.0		27-14-11-52
ETIM 9.0		EC002780
ETIM 8.0		EC002780
ECCN		NO US CLASSIFICATION
Environmental Product Compliance		
RoHS Compliance Status		Compliant,No Exemption



Approvals / Certificates

General approvals



Approval	Standard	Certificate Name
EAC GZO Almaty Standart	TP TC 004/2011	EAC CoC 03084

Declarations of conformity and manufacturer's declarations

Approval	Standard	Certificate Name
EU-Declaration of Confor- mity WAGO GmbH & Co. KG	-	-
UK-Declaration of Confor- mity WAGO GmbH & Co. KG	-	-

Downloads

Environmental Product Compliance

Compliance Search

Environmental Product Compliance 830-800/000-312	
--	--

Documentation

Bid Text

830-800/000-312	19.02.2019	xml 3.68 KB	
830-800/000-312	01.07.2019	docx 15.43 KB	

CAD/CAE-Data

CAD data

2D/3D Models 830-800/000-312	
---------------------------------	--

CAE data

EPLAN Data Portal 830-800/000-312	
ZUKEN Portal 830-800/000-312	

1 Compatible Products

1.1 Optional Accessories

1.1.1 Ferrule

1.1.1.1 Ferrule



**Item No.: 216-262**  
Ferrule; Sleeve for 0.75 mm² / 18 AWG; in-  
sulated; electro-tin plated; electrolytic  
copper; gastight crimped; acc. to DIN  
46228, Part 4/09.90; gray



**Item No.: 216-263**  
Ferrule; Sleeve for 1 mm² / AWG 18; insu-  
lated; electro-tin plated; electrolytic cop-  
per; gastight crimped; acc. to DIN 46228,  
Part 4/09.90; red



**Item No.: 216-264**  
Ferrule; Sleeve for 1.5 mm² / AWG 16; in-  
sulated; electro-tin plated; electrolytic  
copper; gastight crimped; acc. to DIN  
46228, Part 4/09.90; black



**Item No.: 216-284**  
Ferrule; Sleeve for 1.5 mm² / AWG 16; in-  
sulated; electro-tin plated; electrolytic  
copper; gastight crimped; acc. to DIN  
46228, Part 4/09.90; black



1.1.1.1 Ferrule



Item No.: 216-289

Ferrule; Sleeve for 10 mm² / AWG 8; insulated; electro-tin plated; electrolytic copper; gastight crimped; acc. to DIN 46228, Part 4/09.90; red



Item No.: 216-209

Ferrule; Sleeve for 10 mm² / AWG 8; insulated; electro-tin plated; red



Item No.: 216-266

Ferrule; Sleeve for 2.5 mm² / AWG 14; insulated; electro-tin plated; electrolytic copper; gastight crimped; acc. to DIN 46228, Part 4/09.90; blue



Item No.: 216-286

Ferrule; Sleeve for 2.5 mm² / AWG 14; insulated; electro-tin plated; electrolytic copper; gastight crimped; acc. to DIN 46228, Part 4/09.90; blue



Item No.: 216-267

Ferrule; Sleeve for 4 mm² / AWG 12; insulated; electro-tin plated; electrolytic copper; gastight crimped; acc. to DIN 46228, Part 4/09.90; gray



Item No.: 216-287

Ferrule; Sleeve for 4 mm² / AWG 12; insulated; electro-tin plated; electrolytic copper; gastight crimped; acc. to DIN 46228, Part 4/09.90; gray



Item No.: 216-208

Ferrule; Sleeve for 6 mm² / AWG 10; insulated; electro-tin plated; electrolytic copper; gastight crimped; acc. to DIN 46228, Part 4/09.90; yellow



Item No.: 216-288

Ferrule; Sleeve for 6 mm² / AWG 10; insulated; electro-tin plated; electrolytic copper; gastight crimped; acc. to DIN 46228, Part 4/09.90; yellow

1.1.2 Marking

1.1.2.1 Marking strip



Item No.: 709-196

Marking strips; for laser printer; translucent



Item No.: 210-831

Marking strips; on reel; 2.3 mm wide; plain; Self-adhesive; white



Item No.: 210-832

Marking strips; on reel; 3 mm wide; plain; Self-adhesive; white



Item No.: 709-177

Marking strips; on reel; 7.5 mm wide; not stretchable; plain; snap-on type; translucent



Item No.: 709-178

Marking strips; on reel; 7.5 mm wide; not stretchable; plain; snap-on type; white

1.1.3 Tool

1.1.3.1 Operating tool



Item No.: 210-720

Operating tool; Blade: 3.5 x 0.5 mm; with a partially insulated shaft; multicoloured