

THIS DRAWING IS UNPUBLISHED.

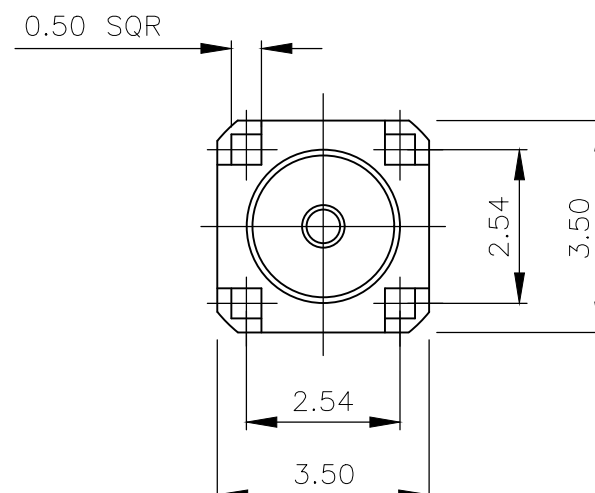
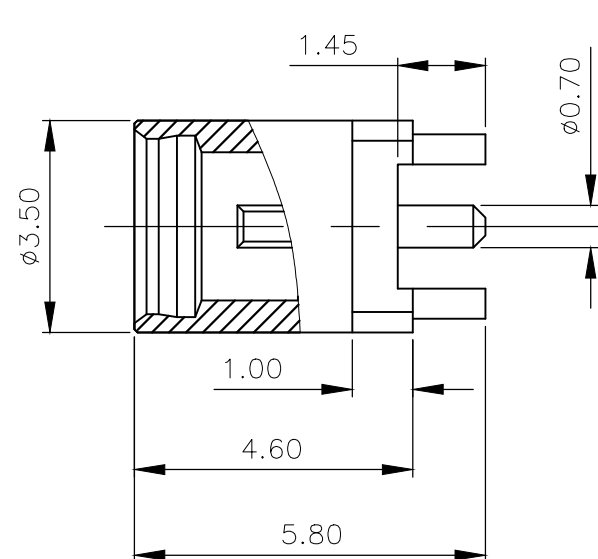
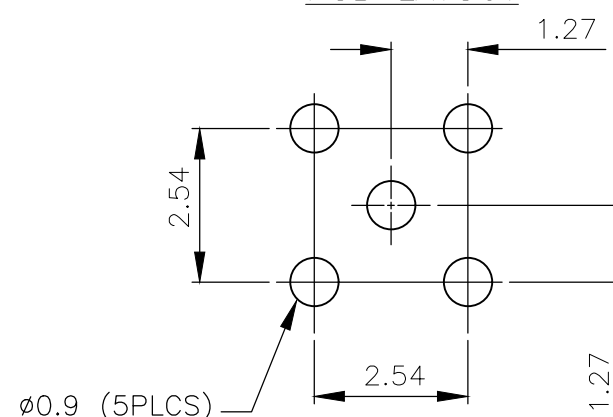
RELEASED FOR PUBLICATION NOV , 2003.

© COPYRIGHT 2003 By -

ALL RIGHTS RESERVED.

REVISIONS

P	LTR	DESCRIPTION	DATE	DWN	APVD
	A1	REVISED PER ECR-20-010398	23JUL2020	ED	RS

RECOMMENDED
PCB LAYOUT

2 5u" MIN Au PLATING OVER 50u" MIN NI PLATING

3 1u" MIN Au PLATING OVER 50u" MIN NI PLATING

4 ELECTRICAL CHARACTERISTICS

FREQUENCY RANGE:	DC - 6GHz
NOMINAL IMPEDANCE:	50 Ohm
INSULATION RESISTANCE:	1000MOhm
WORKING VOLTAGE:	335V RMS at Sea Level
DIELECTRIC WITHSTAND VOLTAGE:	500V RMS Max
CONTACT RESISTANCE:	
CENTRE CONTACT:	5.00 MOhm Max
OUTER CONTACT:	2.50 MOhm Max

MECHANICAL CHARACTERISTICS

DURABILITY: 500 Cycles Min

ENVIRONMENTAL CHARACTERISTICS

OPERATING TEMPERATURE: -65°C to +165°C

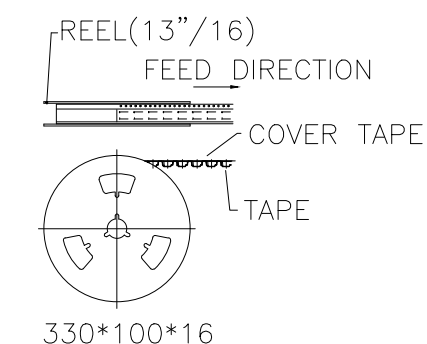
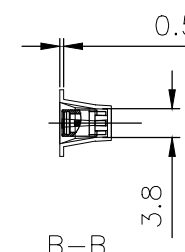
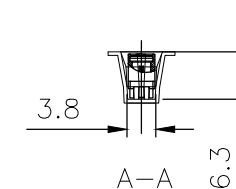
5 FOR TECHNICAL DATA REFER TO YOUR LOCAL TE CONNECTIVITY SALES OFFICE

6 ALL DIMENSIONS ARE NOMINAL FOR REFERENCE ONLY UNLESS OTHERWISE STATED

1 PACKAGING: TAPE AND REEL

REELED TAPE

EXTENDED TAPE

TAPE MATERIAL BLACK PS 0.5
PIECES/REEL 1000
ALL DIMENSIONS ACCORDING
EIA-481-D

			1	BERYLLIUM COPPER 2	CONTACT	3
			1	PTFE	INSULATOR	2
			1	BRASS 3	BODY	1
			-1	MATERIAL	DESCRIPTION	ITEM
			1			
QUANTITY PER ASSY				PARTS LIST		

THIS DRAWING IS A CONTROLLED DOCUMENT.

DIMENSIONS: mm	TOLERANCES UNLESS OTHERWISE SPECIFIED:
	0 PLC ± -
	1 PLC ± 0.2
	2 PLC ± 0.15
	3 PLC ± -
	4 PLC ± -
	ANGLES ± -
	FINISH ± -
MATERIAL SEE TABLE	SEE TABLE

DWN ED 17APR2019

CHK BW 17APR2019

APVD RS 17APR2019

PRODUCT SPEC

APPLICATION SPEC

WEIGHT 0.000000

CUSTOMER DRAWING

TE Connectivity

NAME
MMCX STRAIGHT PCB MOUNT SOCKET RECEPTACLE
50 OHMS

SIZE CAGE CODE DRAWING NO RESTRICTED TO

A3 00779 C-2081857

SCALE NTS SHEET 1 OF 1 REV A1