

# Han 24B-gg2-M25

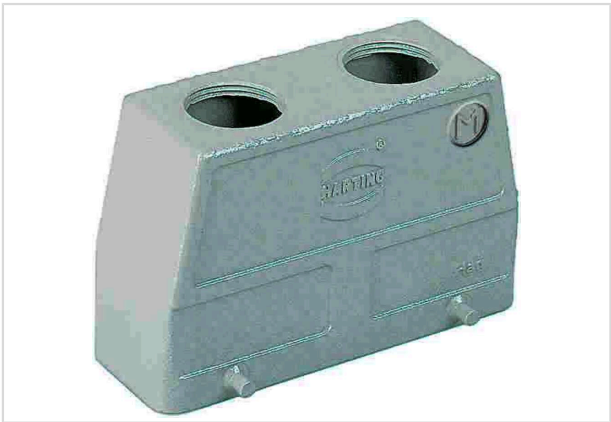


Image is for illustration purposes only. Please refer to product description.

Part number	19 30 024 0466
Specification	Han 24B-gg2-M25
HARTING eCatalogue	<a href="https://harting.com/19300240466">https://harting.com/19300240466</a>

## Identification

Category	Hoods / Housings
Series of hoods/housings	Han® B
Type of hood/housing	Hood
Type	High construction

## Version

Size	24 B
Version	Top entry
Number of cable entries	2
Cable entry	2x M25
Locking type	Double locking lever
Field of application	Standard hoods/housings for industrial connectors

## Technical characteristics

Limiting temperature	-40 ... +125 °C
Note on the limiting temperature	For use as a connector according to IEC 61984.
Mating cycles	≥500
Degree of protection acc. to IEC 60529	IP65 IP66 IP67
Type rating acc. to UL 50 / UL 50E	4 4X 12



**Pushing Performance**  
Since 1945

## Material properties

Material (hood/housing)	Aluminium die-cast
Surface (hood/housing)	Powder-coated
Colour (hood/housing)	RAL 7037 (dust grey)
RoHS	compliant
ELV status	compliant
China RoHS	e
REACH Annex XVII substances	Not contained
REACH ANNEX XIV substances	Not contained
REACH SVHC substances	Not contained
California Proposition 65 substances	Yes
Fire protection on railway vehicles	EN 45545-2 (2020-08)
Requirement set with Hazard Levels	R1 (HL 1-3) R7 (HL 1-3)

## Specifications and approvals

Approvals	CE DNV GL
-----------	--------------

## Commercial data

Packaging size	1
Net weight	248 g
Country of origin	Germany
European customs tariff number	85389099
GTIN	5713140126794
eCl@ss	27440202 Shell for industrial connectors
ETIM	EC000437
UNSPSC 24.0	39121466