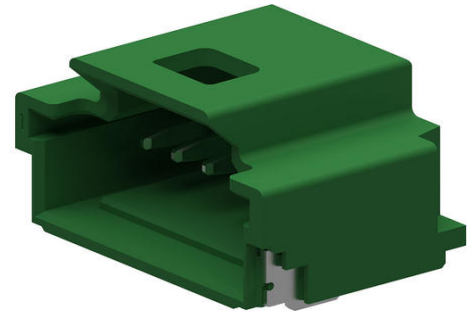




Part Number : [5015680767](#)
Series Number : 501568
Status : Active - Proprietary
Product Category : PCB Headers and Receptacles



Drawings

[5015680767_sd.pdf](#)

Specifications

[5013300000-AS-000.pdf](#)

[SPK-501568-001-001.pdf](#)


[SPK-501568-002-001.pdf](#)

[5013300000-PS-001.pdf](#)

[PS-501568-001-001.pdf](#)

Product Environment Compliance

Compliance

| | |
|--------------------|---|
| GADSL/IMDS | Compliant with Exemption 44; 33 |
| China RoHS |  per SJ/T 11365-2006 |
| EU ELV | Not Relevant |
| Low-Halogen Status | Not Low-Halogen per IEC 61249-2-21 |
| REACH SVHC | Not Contained per D(2025)7771-DC (04 Feb 2026) |
| EU RoHS | Compliant per EU 2015/863 |

Compliance Statements

- EU RoHS
- REACH SVHC
- Low-Halogen

Industry Documents

- IPC 1752A Class C
- IPC 1752A Class D

- Molex Product Compliance Declaration
- IEC-62474
- chemSHERPA (xml)

Substances of Interest

- PFAS

EU RoHS Certificate of Compliance

Additional Product Compliance Information

Part Details

General

| | |
|----------------|---|
| Status | Active - Proprietary |
| Category | PCB Headers and Receptacles |
| Series | 501568 |
| Description | 1.00mm Pitch, Pico-Clasp PCB Header, Single Row, Right-Angle, Surface Mount, Tin Plated, Inner Positive Lock, 7 Circuits, Green |
| Application | Wire-to-Board |
| Component Type | PCB Header |
| Product Name | Pico-Clasp |
| UPC | 800756911366 |

Agency

| | |
|----|--------|
| UL | E29179 |
|----|--------|

Electrical

| | |
|-------------------------------|------------------|
| Current - Maximum per Contact | 1.0A |
| Voltage - Maximum | 100V AC (RMS)/DC |

Physical

| | |
|--------------------------------|-------|
| Breakaway | No |
| Circuits (Loaded) | 7 |
| Circuits (maximum) | 7 |
| Color - Resin | Green |
| Durability (mating cycles max) | 30 |
| First Mate / Last Break | No |

| | |
|--------------------------------|-----------------------|
| Glow-Wire Capable | No |
| Guide to Mating Part | No |
| Keying to Mating Part | No |
| Lock to Mating Part | Yes |
| Material - Metal | Phosphor Bronze |
| Material - Plating Mating | Tin |
| Material - Plating Termination | Tin |
| Material - Resin | Nylon |
| Net Weight | 167.300/mg |
| Number of Rows | 1 |
| Orientation | Right Angle |
| Packaging Type | Embossed Tape on Reel |
| PCB Locator | No |
| PCB Retention | Yes |
| Pitch - Mating Interface | 1.00mm |
| Polarized to Mating Part | Yes |
| Polarized to PCB | No |
| Shrouded | Shrouded |
| Stackable | No |
| Temperature Range - Operating | -40° to +105°C |
| Termination Interface Style | Surface Mount |

Mates With / Use With

Mates with Part(s)

| Description | Part Number |
|---|---------------|
| Pico-Clasp Low-Halogen Single Row Receptacle Housings | <u>501330</u> |

This document was generated on Jun 03, 2026