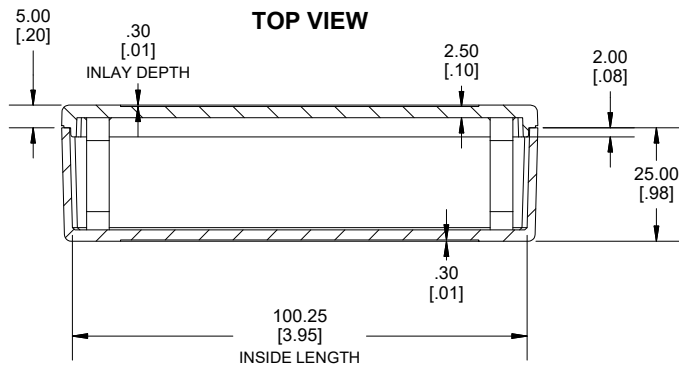
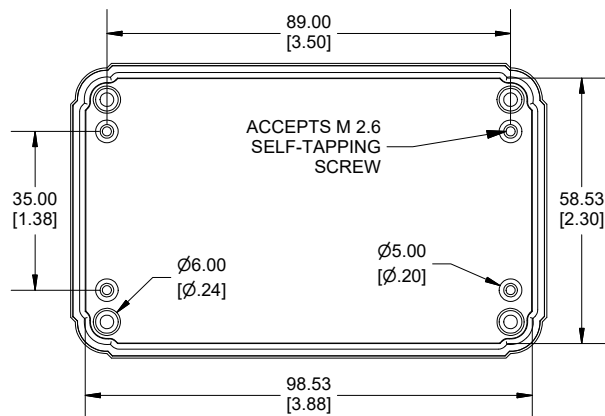


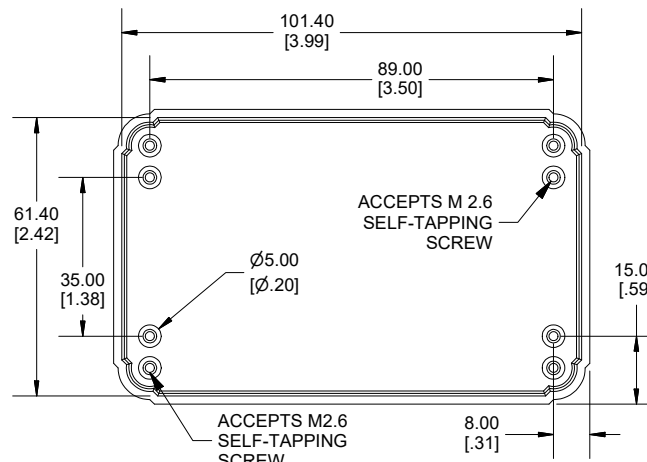
TOP VIEW



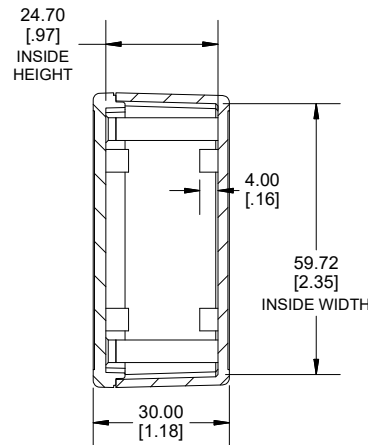
SECTION B-B  
SIDE VIEW



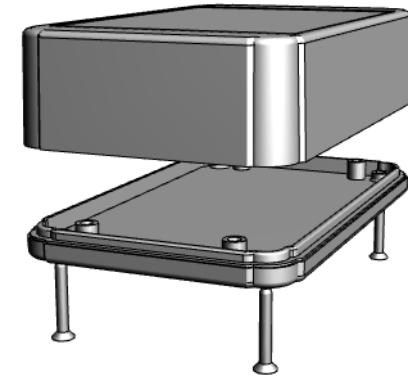
INSIDE LID



INSIDE BOX



SECTION A-A  
END VIEW



Enclosures can be Factory Modified (Milling, Drilling, Printing etc.)  
Contact Factory (modshop@hammfg.com) for quotes  
Solid models of this enclosure available in .stp or .x\_t  
(Part number and text placement/orientation on our products are subject to change,  
we do not recommend using them as a locating reference for modification purposes)

#### NOTE

Purchased assembly includes box, lid, 4 PCB screws, and 4 Lid screws.

Recommended Torque : (43-50) Ozf.in / (30-35) cN.m

#### RL Enclosure

General Purpose ABS Light Grey (UL94 HB)	RL6165
General Purpose ABS Black (UL94 HB)	RL6165BK

#### ACCESSORIES

Lid Screw (M2.6 X 18mm Self-tapping) (50 Pkg)	SC520-50
PCB Screw (M2.6 X 6mm Self-tapping) (50 Pkg)	SC519-50



**HAMMOND  
MANUFACTURING.**

**RL6165**

[www.hammondmfg.com](http://www.hammondmfg.com)

Dimensions:  
mm  
[inches]